



UNIVERSITY
of GUELPH



**YOUR ADVENTURE
STARTS HERE.
LET'S IMPROVE LIFE
TOGETHER.**

**CHECK OUT OUR
INTERACTIVE MAP**





30,000

STUDENTS FROM 135+ COUNTRIES

#1

CANADIAN COMPREHENSIVE UNIVERSITY FOR TOTAL RESEARCH DOLLARS (MACLEAN'S, 2023)

92.03%

EMPLOYMENT RATE WITHIN 6 MONTHS OF GRADUATION

TOP 10

PLACES TO LIVE IN CANADA (BEST CITIES, 2022)

TOP 500

UNIVERSITY IN THE WORLD (QS, 2023)

16

UNDERGRADUATE DEGREE PROGRAMS

75+

MAJORS

60+

MINORS

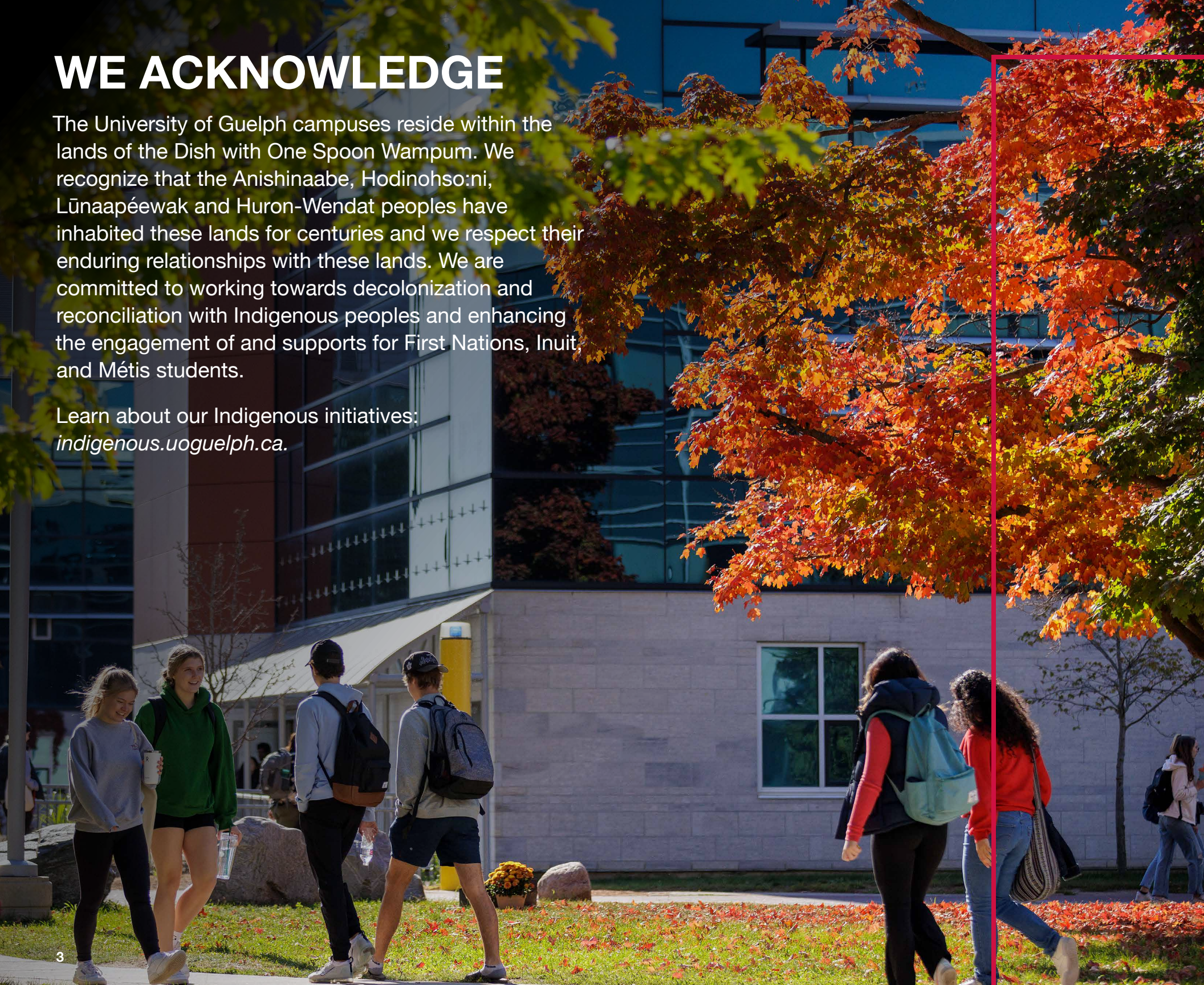
\$27 MILLION

IN SCHOLARSHIPS AND BURSARIES DISTRIBUTED LAST YEAR

WE ACKNOWLEDGE

The University of Guelph campuses reside within the lands of the Dish with One Spoon Wampum. We recognize that the Anishinaabe, Hodinohso:ni, Lūnaapéewak and Huron-Wendat peoples have inhabited these lands for centuries and we respect their enduring relationships with these lands. We are committed to working towards decolonization and reconciliation with Indigenous peoples and enhancing the engagement of and supports for First Nations, Inuit, and Métis students.

Learn about our Indigenous initiatives:
indigenous.uoguelph.ca.



CONTENTS:

PROGRAMS

I'm not sure what I want to study

Programs by Theme	5
-------------------------	---

I know exactly what I want to study

Degree Programs	7
Minors and Certificates	8
Co-op and Experiential Learning	9
Study Abroad	11
Bachelor of Applied Science	13
Bachelor of Arts	15
Bachelor of Arts and Sciences	21
Bachelor of Bio-Resource Management	23
Bachelor of Commerce	25
Bachelor of Computing	29
Bachelor of Creative Arts, Health and Wellness	31
Bachelor of Engineering	33
Bachelor of Indigenous Environmental Science and Practice	37
Bachelor of Landscape Architecture	39
Bachelor of Mathematics	41
Bachelor of One Health	43
Bachelor of Science	45
Bachelor of Science in Agriculture	51
Bachelor of Science in Environmental Sciences	53
Doctor of Veterinary Medicine	55
Associate Diplomas	57
University of Guelph-Humber	59
Graduate Programs	88

ADMISSION

What do I need to get in?

Ontario Admission Requirements	61
National Admission Requirements	63
How to Apply	65
Additional Documents	68
English Proficiency	69
FAQs	70
Admission Plan and Timing of Offers	71
Deadlines	73

STUDENT EXPERIENCE

I want the true university experience

City of Guelph	75
Athletics	77
Clubs	78
Living Your Best Life	79
Healthy Mind and Body (Wellness)	80
Residence	81
Dining on Campus	82

Paying for it all

Financial Support	83
Student Financial Services	85
How much will it all cost?	86

Visit, connect and learn more

Visit Campus	Back cover
Connect with us	Back cover

I'M NOT SURE WHAT I WANT TO STUDY

PROGRAMS BY THEME

We don't expect you to have your life figured out. That's why we offer the flexibility to start in one program and make a switch if you find something you like better. Check out your options.

I'm interested in animals, conservation and health...

ANIMAL HEALTH

Animal Biology	46
Animal Science	52
Bio-Medical Science	47
Doctor of Veterinary Medicine	55
Equine Management	24
Marine and Freshwater Biology	47
One Health	43
Wildlife Biology and Conservation	49
Zoology	49

I am artistic, creative, and/or love to perform...

ART, DESIGN AND PERFORMANCE

Computer Science	30
Creative Writing	16
Culture and Technology Studies	16
Landscape Architecture	39
Media and Communication Studies (GH)	60
Music	18
Software Engineering	30
Studio Art	19
Theatre Studies	19

I want to have a competitive edge, get a first-rate skillset and make a difference in the world...

ARTS, HUMANITIES AND SOCIAL SCIENCES

Anthropology	16
Arts and Sciences	21
Classical Studies	16
Creative Arts, Health and Wellness	31
Creative Writing	16
Criminal Justice and Public Policy	16
Culture and Technology Studies	16
Economics	16
English	17
Environmental Governance	17
Food, Agricultural and Resource Economics	17
French Studies	17
Geography	17
History	17

International Development Studies	18
Justice and Legal Studies	18
Justice Studies (GH)	60
Mathematical Economics	18
Music	18
One Health	43
Philosophy	18
Political Science	18
Psychology	18
Psychology (GH)	60
Sexualities, Genders and Social Change	18
Sociology	18
Studio Art	19
Theatre Studies	19

I see myself as an ethical and sustainable business leader...

BUSINESS AND MANAGEMENT

Accounting	27
Business (GH)	60
Economics	16
Environmental Economics and Policy	54
Environmental Management	24
Equine Management	24
Food, Agricultural and Resource Economics	17
Food and Agricultural Business	27
Government, Economics and Management	27
Hospitality and Tourism Management	27
International Development Studies	18
Management	27
Management Economics and Finance	27
Marketing Management	27
Mathematical Economics	18
Mathematical Science	42
Media and Communication Studies (GH)	60
Real Estate	27
Sport and Event Management	27

I want to collaborate and solve complex problems...

ENGINEERING, COMPUTING AND TECHNOLOGY

Biological Engineering	34
Biomedical Engineering	34
Computer Engineering	34
Computer Science	30

Culture and Technology Studies	16
Engineering Systems and Computing	34
Environmental Engineering	34
Mechanical Engineering	35
Physical Science	49
Physics	49
Software Engineering	30
Water Resources Engineering	35

I want to save the planet...

ENVIRONMENT AND LAND RESOURCES

Crop Science	52
Ecology	54
Environmental Economics and Policy	54
Environmental Engineering	34
Environmental Governance	17
Environmental Management	24
Environment and Resource Management	54
Environmental Sciences	54
Geography	17
Honours Agriculture	52
Horticulture	52
Indigenous Environmental Science and Practice	37
International Development Studies	18
Landscape Architecture	39
Marine and Freshwater Biology	47
One Health	43
Turfgrass Management	58
Water Resources Engineering	35
Wildlife Biology and Conservation	49

I want to help feed 8 billion people...

FOOD

Applied Human Nutrition	14
Crop Science	52
Food, Agricultural and Resource Economics	17
Food and Agricultural Business	27
Food Science	47
Honours Agriculture	52
Horticulture	52
Nutritional and Nutraceutical Sciences	48
One Health	43

I'm interested in human health...

HUMAN HEALTH

Applied Human Nutrition	14
Biochemistry	46
Biological and Pharmaceutical Chemistry	46
Biological Engineering	34
Biomedical Engineering	34
Bio-Medical Science	47
Biomedical Toxicology	47
Child Studies	14
Community Social Services (GH)	60
Creative Arts, Health and Wellness	31
Early Childhood Studies (GH)	60
Family Studies and Human Development	14
Food Science	47
Human Kinetics	47
Kinesiology (GH)	60
Microbiology	47
Molecular Biology and Genetics	47
Neuroscience	48
Nutritional and Nutraceutical Sciences	48
One Health	43
Psychology	18
Psychology (GH)	60
Sexualities, Genders and Social Change	18

I want to work with numbers...

MATHEMATICS AND ECONOMICS

Accounting	27
Economics	16
Environmental Economics and Policy	54
Food, Agriculture and Resource Economics	17
Management Economics and Finance	27
Mathematical Economics	18
Mathematical Science	42

I want to contribute to discoveries that will aid humankind, our planet and beyond...

SCIENCES

Animal Biology	46
Animal Science	52
Arts and Sciences	21
Biochemistry	46
Biological and Pharmaceutical Chemistry	46

Biological Science	47
Bio-Medical Science	47
Biomedical Toxicology	47
Chemistry	47
Crop Science	52
Doctor of Veterinary Medicine	55
Environmental Management	24
Equine Management	24
Food Science	47
Honours Agriculture	52
Horticulture	52
Human Kinetics	47
Kinesiology (GH)	60
Marine and Freshwater Biology	47
Microbiology	47
Molecular Biology and Genetics	47
Neuroscience	48
Nutritional and Nutraceutical Sciences	48
One Health	43
Physical Science	49
Physics	49
Wildlife Biology and Conservation	49
Zoology	49

I want to get my career going ASAP!...

ASSOCIATE DIPLOMAS

Agriculture (R)	58
Environmental Technician (R)	58
Equine Care and Management (R)	58
Horticulture (R)	58
Turfgrass Management	58
Veterinary Technology (R)	58

Note: Programs listed with (GH) are offered at the University of Guelph-Humber in Toronto. Programs listed with an (R) are offered at the Ridgetown Campus located in Ridgetown.

- Program is offered in both regular and co-op
- Program has mandatory co-op

I KNOW EXACTLY WHAT I WANT TO STUDY

DEGREE PROGRAMS

Bachelor of Applied Science	13
Bachelor of Arts	15
Bachelor of Arts and Sciences	21
Bachelor of Bio-Resource Management	23
Bachelor of Commerce	25
Bachelor of Computing	29
Bachelor of Creative Arts, Health and Wellness	31
Bachelor of Engineering	33
Bachelor of Indigenous Environmental Science and Practice	37
Bachelor of Landscape Architecture	39
Bachelor of Mathematics	41
Bachelor of One Health	43
Bachelor of Science	45
Bachelor of Science in Agriculture	51
Bachelor of Science in Environmental Sciences	53
Doctor of Veterinary Medicine	55
<hr/>	
Associate Diplomas	57
University of Guelph-Humber	59



IT'S YOUR CHOICE.

Build your best degree. Add a minor, explore electives, top it off with a certificate. Tailor it as you go - it's your choice that matters.

Minors

Choose a minor because it intrigues you, because it complements your major, or because it's something you've always wanted to learn.

- Accounting
- Agriculture
- Anthropology
- Applied Geomatics
- Biochemistry
- Biology
- Biotechnology
- Black Canadian Studies
- Business
- Business Data Analytics
- Business Economics
- Chemistry
- Classical Studies
- Computing and Information Science
- Creative Writing
- Culture and Technology Studies
- Ecology
- Economics
- English
- Entrepreneurship
- Environmental Engineering
- Family and Child Studies
- Food Engineering
- French Studies
- Geography
- History
- Human Resources
- International Business
- International Development Studies
- Linguistics
- Marketing
- Mathematical Science
- Mathematics
- Media and Cinema Studies
- Microbiology
- Molecular Biology and Genetics
- Museum Studies
- Music
- Neuroscience
- Nutritional and Nutraceutical Sciences
- One Health
- Philosophy
- Physics
- Political Science
- Project Management
- Psychology
- Sexualities, Genders and Social Change
- Sociology
- Sport and Event Management
- Statistics
- Studio Art
- Sustainable Business
- Theatre Studies
- Zoology

Certificates

opened.uoguelph.ca

Add a certificate to your studies and improve your potential employment opportunities.

- Accounting
- Business
- Environmental Citizenship
- Environmental Conservation
- Food Science
- Hospitality Studies
- Indigenous Environmental Governance
- Leadership
- Public Policy and Administration

**Minors and certificates can be selected after you begin your university studies.*

ACADEMIC TERMS AND DEFINITIONS

An **undergraduate degree** is the first degree you can complete at the university level. It is commonly called a baccalaureate or bachelor's degree, and may be further classified as honours or general.

An **honours degree** is typically completed in four years of full-time study and often focuses on a particular discipline, e.g., Honours Bachelor of Science (in Biochemistry); Honours Bachelor of Arts (in Classical Studies).

A **general degree** is typically completed in three years of full-time study and often involves a more generalized or broadly defined study area. To view a list of programs that are offered in general versus honours format, please visit the Undergraduate Calendar at admission.uoguelph.ca/degrees.

A **professional degree** meets the accreditation standards of a particular professional association or college. At U of G, we offer professional degrees in Veterinary Medicine (DVM), Engineering (B.Eng.), Applied Human Nutrition (B.A.Sc.) and Landscape Architecture (BLA). Several professional degrees, like the DVM, require the completion of some university study before application.

An **associate diploma** is a two-year program offered on our main campus and at our Ridgetown campus. It involves focused, hands-on training in a specific field, e.g., Associate Diploma in Environmental Technician; Associate Diploma in Turfgrass Management.

A **graduate degree** can be completed after an undergraduate degree. It involves additional study in a particular area of interest and may include research or the completion of a thesis.

A **major** is the main area of study within an honours degree. It involves intensive focus on a specific discipline, e.g. Environmental Engineering; Bio-Medical Science, Marketing Management.

A **minor** is an optional secondary area of study that can be related to or different from your major and provides an introductory level of education about a single discipline. A minor is selected after you begin your university studies (see list).

A **credit** is the unit of measurement for university courses. Usually, a course that lasts one semester is equivalent to one half-credit (0.5). Full-year courses are usually one full credit (1.0).

A **semester** is an academic study period of 12 weeks. U of G offers three semesters of study: fall (September to December), winter (January to April) and summer (May to August).



Experiential Learning Hub

uoguelph.ca/ELhub

LEARNING OUTSIDE THE CLASSROOM

The Experiential Learning Hub will connect you with co-op programs, further education planning, on-and-off-campus jobs, volunteer and co-curricular opportunities, job fairs and networking events.

Experiential Learning

uoguelph.ca/ELhub

Graduate with a degree and a resumé loaded with the kind of experience employers want to see!

Experiential Learning is learning by doing. It's co-op, career practice courses, entrepreneurship programs, volunteer programs, engaging in the community, on-and off-campus work, field courses, and certificate programs – to name a few!

Career Education

uoguelph.ca/ELhub

The Experiential Learning Hub supports all students and alumni as they plan for their career or further education. We'll help you develop a personal career and/or education plan and teach you how to market yourself and your degree. We'll help you with job search skills, where to look for summer, part-time and post-graduation opportunities.

Co-op

uoguelph.ca/coop

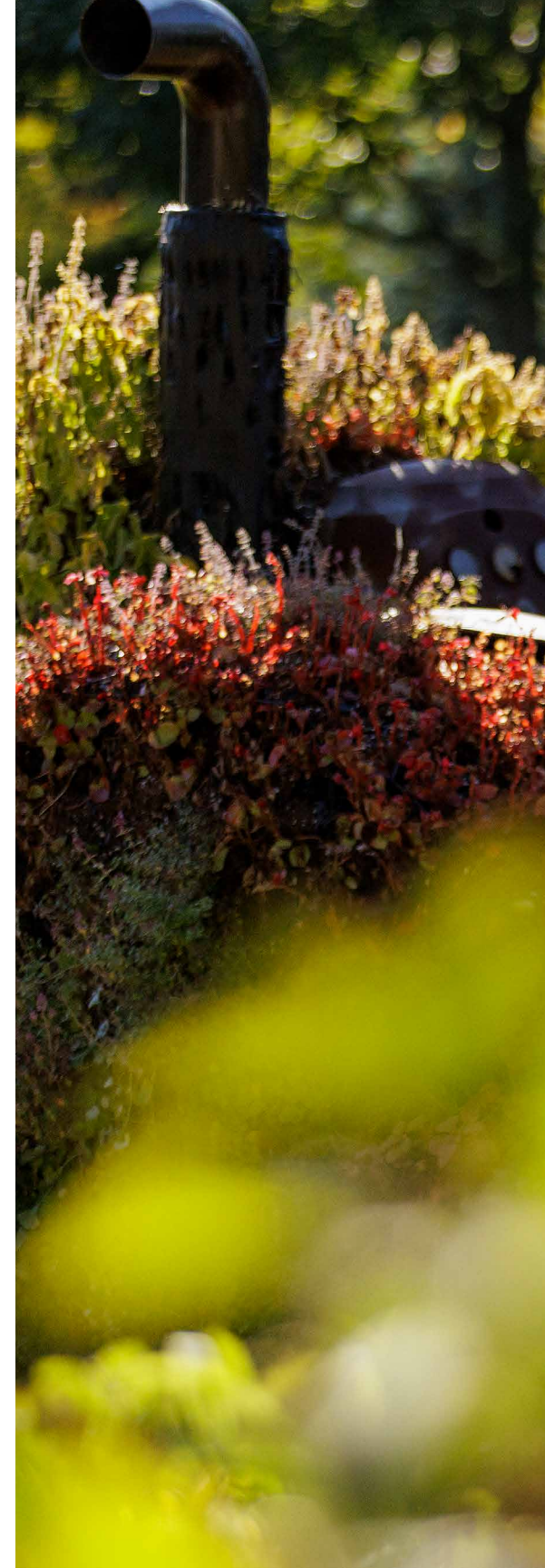
Don't wait until graduation! Use the co-op experience to explore career paths and build your network.


Why Apply to U of G Co-op?

- You'll complete an introductory course that will prepare you for your work terms.
- Your Co-op Coordinator will help you along the way.
- You'll complete 3-5 work terms.
- All co-op positions are full-time and PAID!
- You'll build essential skills to launch your career.



Your co-op schedule depends on your program. Scan this QR code to learn more about each co-op program, its academic/work sequence, and the types of jobs students have held in the past.





“I knew studying here would provide me with the highest quality education and best opportunities for growth. Through my program, I’ve gained experience that helped me land a job with a Fortune 500 Tech Company, Oracle NetSuite.”

Simone Ianniello

Hometown: Pisticci, Italy

Bachelor of Commerce, food and agricultural business, co-op

Campus Involvement: Events Manager Lang Sustainability Conference (2nd year), Corporate Manager Lang Students' Association (3rd year), Director of Corporate Relations Lang Students' Association (4th year), Teaching Assistant, JDCC Delegate, Co-Chair of the Corporate Committee, Oracle NetSuite Campus Ambassador

4,200+

active employers in more than 30 countries.

\$40 MILLION+

total combined earnings for all co-op students in 2022/2023.



Study Abroad

uoguelph.ca/cip

WHEN THE ENTIRE PLANET BECOMES YOUR CLASSROOM

Why travel between semesters when you can travel as part of one?

Join the more than 400 students who travel to another country and earn credits toward their degree. Go for a few weeks, a semester or an academic year.

Photo credit: "Conquered" | taken by Shawn Goh in Austria



100+

STUDY ABROAD OPPORTUNITIES IN 34 COUNTRIES

SHORT-TERM

SUMMER FIELD SCHOOL PROGRAMS

110

PARTNER INSTITUTIONS FOR EXCHANGE PROGRAMS

RESEARCH

SUMMER RESEARCH PROGRAMS

LEARN

A NEW LANGUAGE OVER THE SUMMER



Bachelor of Applied Science

uoguel.ph/basc

UNDERSTAND LIFE AND THEN YOU CAN IMPROVE IT.

Learn the biological, psychological and social perspectives of human development and behaviour.

“I transferred into Adult Development after discovering how applicable the program material was to my interests in psychosocial health. From understanding the basic concepts of applied research in first and second year, my program allowed me to explore personal interests such as sexuality, identity development, psychosocial behaviours, and sport psychology. Through my studies and my experiences in athletics, I’ve become more sure of who I am and have learned how to navigate through the challenges I encounter.”

James McCole

Bachelor of Applied Science, family studies and human development (formerly adult development)

High School: Neil McNeil High School, Toronto, Ontario

Campus Involvement: varsity men’s swimming 2017-2021; student athlete mentor; EDI Athletics Advisory Council Member; exchange to Malmö, Sweden; Varsity Athletics Leadership Academy member

Majors

APPLIED HUMAN NUTRITION

uoguel.ph/bascahn

Food has a powerful influence on the lives of individuals and populations. The Applied Human Nutrition program provides a thorough understanding of all aspects of human nutrition. Lectures provide core learnings that are grounded in the biological and social sciences. Labs allow for the application of classroom instruction. New topics and emerging research are explored in small group seminars. Students may enrol in an area of emphasis in dietetics. The Bachelor of Applied Science in Applied Human Nutrition with an area of emphasis in dietetics is accredited under the Partnership for Dietetic Education and Practice (PDEP) and prepares students for eligibility for registration with a provincial dietetics regulatory body.

Sample Careers: registered dietitian, fitness consultant, food policy analyst, researcher

CHILD STUDIES

uoguel.ph/ch-st

Examine the ways that children learn, develop and grow. In Child Studies, you'll consider the psychological, physiological and social aspects of development and explore ways of working with children in diverse and inclusive settings.

You'll gain both theoretical knowledge and applied skills through coursework and guaranteed practicum placements — completing over 500 hours of practical experience working with children in a variety of settings. When you graduate, you are eligible to apply for membership in the College of Early Childhood Educators.

Sample Careers: early childhood educator, mental health services provider, elementary school teacher, social worker, occupational therapist

FAMILY STUDIES AND HUMAN DEVELOPMENT

uoguel.ph/fshd

Develop the foundation for an exciting career working with individuals and families. This interdisciplinary program provides you with an understanding of individual and family health, well-being, and relationships across the lifespan within the context of diverse social and cultural influences. Guaranteed practicum placements of up to 336 hours allow you to practice your skills and focus your studies in one or more areas including adult development and gerontology, sexuality and relationships, and youth studies.

Sample Careers: counsellor, social worker, elementary/secondary teacher, working with older adults, health promoter, sexuality educator

Sample First-Year Courses

Applied Human Nutrition

- Understanding Foods
- Introduction to Psychology
- Couple and Family Relationships
- Introduction to Nutrition

Child Studies

- Genetics and Society
- Couple and Family Relationships
- Infant Development
- Introduction to Psychology

Family Studies and Human Development

- Human Development
- Sociology
- Introduction to Psychology
- Couple and Family Relationships

* Course selection will vary by major.

Check out the Undergraduate Calendar for more available courses. Go to uoguel.ph/coursecal.



Bachelor of Arts

uoguel.ph/ba

**THINK CRITICALLY.
COMMUNICATE EFFECTIVELY.
UNDERSTAND COMPLEX PROBLEMS.**

Guelph BA grads have one of the highest employment rates among Ontario universities!

“As an international development student, I’ve learned about how to advocate for change in my own community and around the world. My co-op experiences have allowed me to see what differences can be made across different sectors of the workforce. Many of my classes also have advocacy efforts built into the curriculum, which helps me take something tangible and meaningful out of my academic experience.”

Emma Biffi

Bachelor of Arts, international development studies, co-op
High School: St. Benedict’s Catholic Secondary School, Cambridge, Ontario
Co-op Placements: Business Development Assistant at Dialectic; Workplace Engagement Officer at United Way Guelph Wellington Dufferin; Junior Project Analyst at the Ontario Ministry of Agriculture, Food & Rural Affairs
Campus Involvement: Co-President JAYUxGuelph, Co-President Step Above Stigma, Activities Representative for International Development Society, Student Representative on International Development Studies Undergraduate Curriculum Committee, General Member Guelph Model United Nations, Writer for HerCampus Guelph
Scholarships: Board of Governors Scholarship, William Winegard Scholarship in International Development

Majors

ANTHROPOLOGY ■

uoguel.ph/baanth

Explore what it means to be human by taking a closer look at the cultures and societies that make up the world around us. You'll be fascinated by how biology and culture impact our ability to adapt and thrive. You'll invest in understanding the global environment, Indigenous communities, social movements, and how personal health and well-being play a critical role in our day-to-day experiences.

Sample Careers: archaeologist, conservationist, forensic scientist, foreign service officer, museum curator, health promotion officer

CLASSICAL STUDIES

uoguel.ph/baclas

Understand how ancient Greece and Rome continue to impact our modern society through mythology, gender, sexuality, archaeology, politics, drama, sport, fine art, and literature. You'll learn Greek or Latin, begin to ask questions about human nature and identity, or participate in courses that take you to ancient civilizations in Italy, Greece, Spain, or Turkey.

Sample Careers: lawyer, entrepreneur, educator, government official, healthcare worker, archaeologist, foreign affairs officer, museum curator

CREATIVE WRITING

uoguel.ph/bacw

Explore the ways your writing can change the world, driving social justice and environmental awareness through storytelling. You'll take courses in fantasy or science fiction, non-fiction, poetry, screenwriting and learn to write from an inclusion-focused perspective. Over time, you'll develop a portfolio of your own creative work and join a vibrant community of writers and readers.

Sample Careers: writer, journalist, editor, marketer, publisher, game designer, and educator

CRIMINAL JUSTICE AND PUBLIC POLICY ■

uoguel.ph/cjpp

Investigate the causes and the various contexts of crime and criminal behaviour. You'll learn about real-world public policy and its effect on the Canadian criminal justice system. Your enriched understanding of political and social issues will act as a foundation for many careers, including those in law, policy and justice.

Sample Careers: lawyer and legal professional, social services and outreach worker, conflict mediator, policy and data analyst, border services and police officer

CULTURE AND TECHNOLOGY STUDIES ■

uoguel.ph/cts

Learn about the important relationship between technology and the shared values, attitudes, and social norms of cultural communities around the globe. Through powerful, data-related skills such as digital storytelling, programming, podcasting, visualization, gaming, and online publishing, you'll be empowered to tackle the complex problems of tomorrow.

Sample Careers: game designer, public policy analyst, social service worker, digital publisher, educator, web designer, data analyst

ECONOMICS ■

uoguel.ph/economics

Position yourself as an expert in interesting and puzzling issues of our time, such as fluctuations in interest rates and oil prices, or the implications of continental free trade. Integrate pure and applied economic theories with modes of thought, techniques and critical analysis drawn from the arts. Also see B.Comm. Management Economics and Finance.

Sample Careers: economist, stock broker, financial consultant, and marketing analyst

■ Available in co-op



ENGLISH

uoguel.ph/engl

Learn how to write creatively across genres and media in classes taught by some of Canada's most acclaimed writers. You'll study historical literature as well as novels, drama, and poetry that reflect the diversity of cultures and identity in modern life. You'll explore how the written word helps us to understand each other and the world around us.

Sample Careers: content creator, writer, marketing copywriter, educator, publisher, or editor

ENVIRONMENTAL GOVERNANCE ■

uoguel.ph/envgov

Discover how we can live more sustainably by unpacking how people and groups around the world make decisions about the environment. While pursuing one of the most unique environmental degrees in Canada, your training will draw from geography, political science, economics and the humanities. You will gain insight into different types of environmental partnerships, policies and programs, preparing you to be an expert in selecting the right environmental solution. Upon graduation, you'll be an in-demand environmental professional ready for work in government, the private sector and non-governmental organizations (NGOs).

Sample Careers: Environmental lawyer, senior policy advisor, NGO communications and social media campaign specialist, multi-lateral environmental agreement negotiator or analyst, journalist, corporate social responsibility advisor

FOOD, AGRICULTURAL AND RESOURCE ECONOMICS ■

uoguel.ph/fare

Become an expert on a current major global issue — the natural production of food — and upon graduation, enter a workforce where there are more jobs than qualified people to fill them. Explore all areas of agriculture, resources, and applied economics. Study courses in food, hunger and poverty, economics of the agri-food system, and international trade. Also see B.Comm. Food and Agricultural Business.

Sample Careers: market development economist, financial advisor/planner, farm management specialist

FRENCH STUDIES/ÉTUDES FRANÇAISES

uoguel.ph/french

French Studies is more than just learning the French language. You'll have the opportunity to immerse yourself in French culture, language, music, literature, cinema, art, and politics. You'll study the cultural differences here in Canada and around the world. You'll do internships in local schools, contribute to international research, or live in France or Quebec for a semester. Your future bilingual communication skills and cultural understanding will make you irreplaceable in your career.

Sample Careers: communications officer, cultural content creator, linguistic specialist, government translator, French teacher

GEOGRAPHY ■

uoguel.ph/geog

Shape the way humans value, use, and manage the environment. Gain in-demand professional skills in the classroom and lab that will equip you for jobs in sustainability, community-led environmental management, climate change adaptation and more. You'll be poised to launch a career that will make a difference and influence human interactions with the environment, both locally and globally.

Sample Careers: urban or rural planner, environmental regulations officer, consultant, tourism and eco-tourism developer, international development worker

HISTORY ■

uoguel.ph/history

To make change that will improve the world today, you need to look back through history to understand what has already been done. Be transported through time as you explore every region of the world through lenses such as food and health, politics and revolution, gender and sexuality, environmental change, and crime and justice. You can take hands-on historical research courses with community organizations or dive into the archives to see history come alive.

Sample Careers: public policy analyst, lawyer, journalist, business manager, copywriter, archivist/historian

INTERNATIONAL DEVELOPMENT STUDIES ■

uoguel.ph/intdev

Tackle big issues like poverty, social justice, food insecurity, gender inequality and climate change. You'll explore the nature and impacts of economic and social development in Canada and around the world through interdisciplinary teaching and real-world development experience. Choose from five areas of study: Agriculture and Food Security; Development in the Canadian Context; Development in Fragile Contexts; Environment and Sustainable Development; and Gender and Inclusive Development.

Sample Careers: humanitarian or development agency worker, social policy researcher, social worker, global policy analyst and advisor, human rights lawyer, teacher/educator

JUSTICE AND LEGAL STUDIES ■

uoguel.ph/jls

Develop an understanding of how laws, justice and legal systems are shaped by both government policies and our society at large. You'll examine these systems and their connection to the people they govern, both in Canada and around the globe. Choose from five areas of study: Canadian Politics and Governance; Global Relations and Governance; Gender and Sexuality; Arts and Humanities; and Business and Management.

Sample Careers: lawyer and legal professional, policy analyst, international aid worker, journalist, public relations specialist

MATHEMATICAL ECONOMICS ■

uoguel.ph/me

Mathematics and statistics play a huge role in explaining the world around us. This program gives you the opportunity to apply math and stats to real world problems and uncover relationships to other fields. This unique degree will provide you with the tools and techniques to explore a wide variety of careers. Enjoy the freedom to follow your interests while becoming a leader in innovation and ground-breaking discovery!

Sample Careers: consumer behaviour analyst, economist, forensic economist, statistician

MUSIC

uoguel.ph/music

As a music student, you'll be surrounded by musicians, just like yourself, who bring their own unique talents in classical or contemporary, including voice, turntables, drums, jazz and more. You'll receive one-to-one music instruction and take classes in our new state-of-the-art performance facility. You'll learn about branding, social media strategies for musicians, applying for industry grants, booking gigs, and networking within the industry. No audition required for admission. Also see Bachelor of Creative Arts, Health and Wellness.

Sample Careers: music marketing/promotion, music teacher, music therapist, sound/recording engineer, and studio musician/accompanist

PHILOSOPHY

uoguel.ph/phil

You'll pursue questions that have inspired thinkers across eras and cultures. What is it to be human? Do people have free will? What gives life meaning? Explore modern issues and ethical problems that we face today in artificial intelligence, politics, sexuality, and the environment. Learn to look at the world through a new lens, push yourself to understand different views, and make the world a better place.

Sample Careers: lawyer, politician, human resources, ethics advisor, business manager, educator, public service, and not-for-profit sector

POLITICAL SCIENCE ■

uoguel.ph/polsci

Explore how power, authority, and governance shape the world. You'll examine how governmental actions – from the local to the global – shape individual lives, communities, societies, and the planet. You'll examine big questions about why governments matter, how war and peace happen, how gender shapes politics, what factors shape migration and immigration, what political activism looks like, and more.

Sample Careers: lawyer and legal professional, consultant, public relations specialist, policy analyst, human rights and immigration officer, government relations officer

PSYCHOLOGY ■

uoguel.ph/psyc

Explore the powerful inner workings of the human mind. You'll study human and cognitive behaviour to explore the ways people act as individuals and in groups. We dive deep into understanding what makes us human, equipping you with skills needed to understand human interaction, behaviour, thought and feeling.

Sample Careers: mental health worker, clinical psychologist, psychiatrist, human resources specialist, policy advisor, social policy researcher, public relations consultant

SEXUALITIES, GENDERS AND SOCIAL CHANGE

uoguel.ph/sgsc

Explore the systemic structures and issues that exist today and their effect on our human identity, social norms, and self-expression. You'll focus on the influence of power and creativity, within areas such as LGBTQ2IA+, anti-Black racism, Asian hate, (dis)ability and ableism, gender, and more. Through advocacy and outreach, you'll support these communities to create meaningful social change.

Sample Careers: human rights advocate, youth worker, political activist, policy analyst, healthcare worker, marketer, event coordinator, educators

SOCIOLOGY

uoguel.ph/soc

Explore how different societies operate locally and globally, and develop skills needed to tackle social problems today. You'll research topics such as inequality, diversity, culture, work, education, families, youth, social movements, the environment, violence, health, media and more. You'll use this knowledge to learn how you can improve life by making positive social change.

Sample Careers: researcher, policy analyst, human resource professional, educator, health program officer, data scientist

■ Available in co-op

STUDIO ART

uoguel.ph/sart

You'll join one of the top studio art programs in Canada and learn from talented artists in some of the best studio spaces. You'll work in painting, printmaking, drawing, sculpture, photography and time-based media to develop a wide range of skills. Throughout your degree, you'll display your own pieces in galleries on-campus and beyond. No portfolio required for admission. Also see Bachelor of Creative Arts, Health and Wellness.

Sample Careers: artist, digital media producer, art therapist, educator, gallery/museum professional

THEATRE STUDIES

uoguel.ph/theatre

Develop your creative talents and showcase artistic expression through acting, directing, screenwriting, production, and digital performance in our new state-of-the-art performance facility. Not only will you study classical theatre, like Shakespeare, but you'll also learn how to utilize social media, video games, audio narration, and improvisation to share your story with any audience. No audition required for admission. Also see Bachelor of Creative Arts, Health and Wellness.

Sample Careers: film/TV production, politics, education, game design, marketing, acting, playwright

BA GENERAL DEGREE **IN CLASS OR FULLY ONLINE!**

uoguel.ph/bagen

Are you looking to complete a degree in less than 4 years? Want to tailor your degree to your interests? Not sure what topic you want to study in university? Looking for professional development to advance your career?

The BA General is a flexible, generalized 3-year degree that allows you to study a broad range of topics.

There are three ways to complete the BA General degree:

1. Fully ONLINE through asynchronous courses. You'll gain a BA from anywhere and at your own pace!
2. A mixture of online and in-person learning. This allows you to experience the university campus on your schedule.
3. Option 2 + the choice of concentrating in one of 14 areas, including: anthropology; English; French studies; geography; history; international development studies; music; philosophy; political science; psychology; sociology; statistics; theatre studies.

Note: As an Online BA General student, you cannot concentrate in a specific area due to the in-person learning components.

Arts and Business Double Feature

Add a minor from the Gordon S. Lang School of Business and Economics that will help launch your career. A business minor will enhance your skills in communication, problem-solving, leadership, and more!

Minors: accounting, business, business data analytics, economics, entrepreneurship, human resources, international business, marketing, project management, sport and event management and sustainable business.

You can work on real-world problems through case studies and community projects.

Visit admission.uoguelph.ca for more information. Interested in this combination of studies? Apply to your BA of choice and declare a business minor in your first year.



Sample First-Year Courses

- Culture and Technology: Keywords
- Sexuality, Gender, Race and Indigeneity
- Introduction to Psychology
- Introductory Philosophy: Social & Political Issues
- Introduction to Anthropology
- Classical Mythology
- Introductory Microeconomics
- Understanding Politics
- Introduction to Performance
- Crime and Criminal Justice
- Amadeus to Zeppelin: Music and Culture I
- The Language of Media
- Understanding Development and Global Inequalities
- Food, Poverty and Hunger

* Course selection will vary by major.

Check out the Undergraduate Calendar for more available courses. Go to uoguel.ph/coursecal.

“I grew so much through my experience at U of G. Taking chances and getting involved helped me expand my social circle and come out of my shell, and my musicianship has developed so much thanks to playing with the jazz ensemble.”

Lucas Furtado

Bachelor of Arts, music

High school: St. Mary Catholic Secondary School, Pickering, Ontario

Campus Involvement: jazz ensemble



Bachelor of Arts and Sciences

uoguel.ph/bas

KNOWLEDGE DOESN'T HAVE BARRIERS AND NEITHER SHOULD YOU.

Understand and communicate the interconnected nature of scientific knowledge and the human experience when solving the world's most important and complex problems.

"I love that our program has provided so many diverse opportunities to get involved. I've gone on a two-week science-based field research course in marine biology in New Brunswick, and have also had the chance to compete in legal advocacy competitions. Through my work with the mock trial team, I have had the opportunity to host an intercollegiate mock trial competition at the University as well as travel to other competitions at the University of Toronto and McGill University."

Noah Boudreault

Bachelor of Arts, criminal justice and public policy and biology

High School: North Park Collegiate and Vocational School, Brantford, Ontario

Campus Involvement: President/Founder of Mock Trial Team, President of Bachelor of Arts and Sciences

Students' Association

Scholarships: Academic Leadership Scholarship; Arts and Sciences Four Year Scholarship; Dr. Donald Bruce and Dr. Donna Pennee Scholarship; Dean of the College of Arts' Scholarship (x2)

Study Arts and Science in Equal Measure

Specialize in both arts AND sciences! You'll choose one specialization in the sciences and one in the arts to create a degree that is unique to your own personal interests and goals.

You will tie this learning together in your ASCI core courses (meaning Arts and SCiences).

YEAR 1

- Try different first-year arts and science courses to see what topics you like the most.
- Meet other BAS students in ASCI courses where you'll focus on case studies that examine science and the social forces that surround it, and learn to evaluate evidence.

YEAR 2

- You'll learn how knowledge is communicated within society, including how we understand and frame social problems, such as climate change.
- At the end of this year, you'll declare two subjects as your specializations.

YEARS 3 AND 4

By your upper years, you'll apply what you've learned within your two specializations by:

- Taking on local challenges during your community project course.
- Learning how to communicate science to the public.
- Studying focused research topics such as: Science in film, Scientific Racism, Environmental issues, HIV and Society, Public Health, and more.
- Engaging with a societal problem that is important to you in an Independent Research Course. Examples include:
 - Exploring issues of poverty and exploitation in Canada and other countries.
 - Working with vulnerable youth and the elderly.
 - Developing sustainable practices in (re)forestation.
 - Understanding governmental research and policy formation.

Sample Specialization Combos and Career Choices

BIOLOGY + PHILOSOPHY

→ Pursue a career in medical ethics.

NEUROSCIENCE + PSYCHOLOGY

→ Pursue a career in substance abuse and behavioural disorders.

ECOLOGY + INTERNATIONAL DEVELOPMENT STUDIES

→ Pursue a career in environmental policy analysis.

PHYSICS + THEATRE STUDIES

→ Pursue a career in lighting/sound technology.

ENGLISH + ZOOLOGY

→ Pursue a career in Science journalism.

Graduates of our program have worked in fields such as law, medicine, journalism, the environment, performing arts, user experience design, education, and careers you haven't even thought of.

By combining your two specializations with a capstone research project, you will be prepared for graduate school.

Sample First-Year Courses

- Society and Inquiry I
- Indigenous Language and Culture
- Introduction to Psychology
- Biology: Discovering Biodiversity
- Introduction to Theatre Studies

* Course selection will vary by major.

Note: Your first-year courses will depend on the two minors you select. This sample is based on a student considering a science minor in the field of biology and exploring options in the arts and social sciences. Use your first year to explore options. See page 8 for a list of minors.



Bachelor of Bio-Resource Management

uoguelph.ca/bbrm

STUDY OUR MOST VALUABLE RESOURCES, THEN BECOME ONE.

Learn the ins and outs of science, tech and business and prepare for a career that balances the natural world with the business one.

“I was drawn to this program by its combination of business and scientific understanding of the environment. I’ve made valuable connections at U of G, and can’t wait to take my knowledge into the field, where I hope to help businesses develop strategies to become more eco-conscious while continuing to be profitable.”

Alexis Wilks
Bachelor of Bio-Resource Management, environmental management
High School: Humberview Secondary School, Bolton, Ontario
Campus Involvement: President of the BBRM Student Council

Majors

ENVIRONMENTAL MANAGEMENT ■

uoguel.ph/env-m

Combine environmental science with business. Study questions like, how do we fix a damaged ecosystem? And can businesses use AND protect the environment? Courses focus on environmental care and policy, ecology and use of natural resources. Graduate with unique skills and know how to make good decisions for the environment.

Sample Careers: environmental consultant, environmental protection officer, policy analyst

EQUINE MANAGEMENT ■

uoguel.ph/eq-m

Make a career out of your love of horses. Hands-on learning will expand your understanding of this awesome animal and the unique care they require. Learn about biology, physiology, business and horse behaviour while practicing horse care and handling skills. Courses also showcase all of the unique job opportunities available. Students also take this major as an entry point to the field of veterinary medicine.

Sample Careers: breeding and foaling manager, equine facility manager, equine marketing and events coordinator

Sample First-Year Courses

Environmental Management

- Discovering Biodiversity
- Introduction to Canadian Business Management
- Chemistry
- Introduction to Environmental Economics, Law and Policy

Equine Management

- Introduction to Equine Management
- Introductory Financial Accounting
- Principles of Animal Care and Welfare
- Equine Anatomy and Physiology

* Course selection will vary by major.

Check out the Undergraduate Calendar for more available courses. Go to uoguel.ph/coursecal.

■ Available in co-op



Bachelor of Commerce

uoguelph.ca/bcomm



USE BUSINESS AS A FORCE FOR GOOD.

Be the future of business - become an ethical and sustainable business leader.

“The BComm program helped me develop the perfect balance of analytical and communication skills and fostered great research and report writing skills along with a better understanding of a wide variety of finance and economic topics. I was able to build on my presentation skills by working on various projects as well as public speaking. Working around so many like-minded individuals kept me motivated to perform at my absolute best and encouraged me to engage in new activities.”

Sameer Khokar

Bachelor of Commerce, management economics and finance

High School: Bishop Reding Catholic Secondary School, Milton, Ontario

Internships: RBC: I&TS Summer Internship Program, 401 Auto RV & Financing: Sales and Finance Intern

Campus Involvement: Undergraduate Teaching Assistant, Lang Students Association, Director of Finance, Director of Brand

Ambassadors, Brand Ambassador, DECA U Lang: Director of Corporate Relations, Delegate

Scholarships: Top 3 Finalist MLSE Global Partnerships Case Competition, 1st Place- DECA Nationals Canada, Sports and Entertainment Marketing, 2nd Place- ACE Nationals Canada, Sports and Entertainment Marketing, Deans Honour List, University of Guelph Entrance Scholarship

The Future You Advantage

To launch your career, you need the skills, experience and expertise that top employers are demanding. Lang's Future You Advantage offers career-focused experiences in our collaborative, hands-on learning environment.

John F. Wood Centre for Business and Student Enterprise

Launch a business and become your own boss. Lang's John F. Wood Centre for Business and Student Enterprise provides all U of G students and alumni with support, mentorship and funding to help you launch your own student startup.

Business Career Development Centre

The Business Career Development Centre offers tailored career assistance to Lang students. We provide access to workshops, events and services including mentoring and networking opportunities, one-on-one career coaching, and building your professional online presence.

The AACSB Accredited logo features the letters 'AACSB' in a large, bold, white sans-serif font. A thin white vertical line extends from the top of the page down to a small red dot positioned above the 'A'.

AACSB

ACCREDITED

Globally, only 6% of business schools are accredited by the Association to Advance Collegiate Schools of Business (AACSB).

ACCOUNTING ■

uoguel.ph/acct

Achieve a highly respected professional designation and a successful career in business and accounting. The courses in Lang's accounting program are all acknowledged requirements ahead of becoming a Chartered Professional Accountant (CPA) of Ontario. Complement your accounting focus with a secondary area such as leadership, data analytics, business sustainability, marketing, international business, or human resources management. Upon graduation, you can pursue a 4-month graduate diploma in accounting that will advance your standing in achieving your CPA designation.

Sample Careers: public accountant, financial analyst, controller, management consultant

FOOD AND AGRICULTURAL BUSINESS ■

uoguel.ph/fab

Find yourself a place in Canada's second largest industry — agriculture and food. In food and agricultural business, you will explore accounting, economics, finance, marketing, production, organizational behaviour, policy planning and implementation. Become equipped with analytical, entrepreneurial and leadership skills for a variety of professional opportunities in this dynamic and innovative sector, domestically and internationally. Also see BA Food, Agricultural and Resource Economics.

Sample Careers: account executive, policy analyst and consultant, manager/consultant in agribusiness finance

GOVERNMENT, ECONOMICS AND MANAGEMENT ■

uoguel.ph/gem

Combine politics, law and business and explore the unique intersection of the public sector with business and economics. Develop transferable business skills in law, human resources, marketing, accounting and finance, and pursue diverse career opportunities within the public, private and voluntary sectors. A great choice for students hoping to pursue law school.

Sample Careers: governmental policy analyst, business development specialist, legislative assistant, corporate accounts manager

HOSPITALITY AND TOURISM MANAGEMENT ■

uoguel.ph/htm

Create your own adventure and shape sustainable experiences in hospitality and tourism management. Choose your career path in one of three areas of emphasis: Hotel and Lodging; Restaurant and Foodservice; or Tourism Management and gain the skills and leadership abilities sought after by top employers. Apply in-class learning to real-world situations. Expand your horizons by studying abroad and gain industry experience through our unmatched co-op option. Connect and network with the program's prestigious alumni network and industry connections.

Sample Careers: event planner, travel media marketer, hotel and restaurant investment analyst, research consultant, tourism destination specialist, hotel or resort manager, restaurant entrepreneur, conference manager

MANAGEMENT ■

uoguel.ph/mngt

Gain strategic leadership and management skills that prepare you to become an organizational leader. Explore broad management topics such as project management, decision-making, team motivation, negotiation and conflict management, while exploring other business courses. You'll gain a strong foundation in business with an emphasis in leadership and management studies, and it's flexible enough for you to add a minor, certificate and specialized electives. For example, if you know you want to work as a Certified Human Resource Leader (CHRL), choose this major and pursue a minor in Human Resources.

Sample Careers: management consultant, project manager, general manager, business analyst

MANAGEMENT ECONOMICS AND FINANCE ■

uoguel.ph/mef

Integrate the analysis of economics and finance with the practical tools of accounting, business management and marketing in management economics and finance. Specialize your major even further by focusing on either managerial economics or finance. With either choice, your thinking

will become more disciplined, structured and critical, yet open-minded. Apply this to all types of social, management and business issues. Enjoy the intellectual, rewarding challenge and a career to match. Graduates of this major have made an impact in the banking and finance world. Also see BA, Economics.

Sample Careers: financial analyst, economist, policy analyst, accountant, investment banker

MARKETING MANAGEMENT ■

uoguel.ph/mm

Gain a better understanding of consumer behaviour and decision-making — critical skills for any marketer — with Lang's marketing management major. You will receive solid, core business skills in accounting, HR and management while exploring a wide variety of marketing-specific courses like consumer psychology, market research, marketing communications, and consumer law. Prepare for diverse marketing career paths and leadership roles, while becoming a more engaged and global citizen.

Sample Careers: marketing director, retail buying consultant, brand manager, market research, public relations

REAL ESTATE ■

uoguel.ph/re

Meet the high demand for employees in the real estate industry. Develop analytical, conceptual and management skills relevant to the field. Your core business curriculum will be supplemented by industry-relevant real estate studies; you could then be exempt from certain professional certifications and designations, such as the "Accredited Appraiser Canadian Institute" (AACI) designation.

Sample Careers: property or asset manager, development coordinator, commercial real estate broker, housing policy advisor, financial analyst

SPORT AND EVENT MANAGEMENT ■

uoguel.ph/sem

Learn key aspects of the sport and event management industry including sponsorship, media, event hosting, and organizational leadership. You'll gain a strong foundation in business and sport business discipline. Through the Lang's International Institute for Sport

Business and Leadership, you will connect with industry, and benefit from a joint partnership between the School and the Department of Athletics.

Sample Careers: athletics manager, sport operations manager, business development event and sponsorship manager, player development coordinator

UNDECLARED ■

uoguel.ph/com-cal

Want a commerce degree, but not ready to commit to a specialized major? Begin with courses that foster a smooth transition to a specialization in second year. Choose your major (non co-op) at the end of your first year.

Before applying to the Undeclared option, please consider the following:

- Admission to co-op through Undeclared is not guaranteed. If you are interested in co-op, we strongly recommend you apply to co-op programs directly from high school. In-course students can be considered for co-op, but space is limited.
- There is a competitive application process to declare Sport and Event Management through the Undeclared major. Admission is not guaranteed.

Sample First-Year Courses

- Introduction to Business
- Introductory Microeconomics
- Introductory Macroeconomics
- Introductory Financial Accounting
- Introductory Marketing
- Individuals and Groups in Organizations
- Business Mathematics

Options may include:

- Canadian Government and Politics
- Introduction to Psychology
- Economics of the Agri-Food System
- Principles of Management
- The Business of Sport and Event Tourism

* Course selection will vary by major.

Check out the Undergraduate Calendar for more available courses. Go to uoguel.ph/coursecal.



- Available in co-op
- Available in first-year only

Note: If you are interested in co-op, we strongly recommend you apply to co-op programs directly from high school. In-course students can be considered for co-op, but space is limited. Eligibility is subject to your University of Guelph average and availability in the program and major.

“I got accepted into the university Internship program of Marriott International – the largest hotel chain worldwide – and worked at JW Marriott Parq Vancouver and The Douglas, Autograph Collection. I hope to use my education and intern experience to make travel affordable and accessible to everyone.”

Mai Ah Vu
Bachelor of Commerce, hospitality and tourism management
High School: Tran Phu High school for Gifted Students, Vietnam



Bachelor of Computing

uoguel.ph/bcomp

ONES AND ZEROES AND INFINITE POSSIBILITIES.

You'll select an area of application and get the comprehensive knowledge and experience employers want!

"During my last two years of high school I considered several career paths, but it was ultimately the deep sense of satisfaction and excitement I felt while completing my final project of grade 12 Physics and Computer Science classes that solidified my passion for the field. This program has helped me develop valuable skills, from basic problem solving to the extensive programming languages and software skills I now have. My coursework and co-op placements provided me with ample opportunities to develop and hone these skills which I'm confident will serve me well in my future career."

Michaela Hibbert

Bachelor of Computing, computer science, co-op
High School: Orangeville District Secondary School, Orangeville, Ontario
Co-op Placements: Geoware, NCR
Campus Involvement: Guelph Coding Community, K-pop Club

Majors

COMPUTER SCIENCE ■

uoguel.ph/compsci

Computer science gives you a theoretical foundation in computer science and programming. This knowledge, combined with practical experience in computational problem-solving, will enable you to confidently design and develop software programs and computer systems.

Sample Careers: software developer, game programmer, mobile application developer, web infrastructure developer, systems architect

SOFTWARE ENGINEERING ■

uoguel.ph/seng

Software engineering concentrates on team-based software development, professional standards and development processes to help create cutting-edge software architectures and products. As a major, it provides a comprehensive background in design, implementation and software testing.

Sample Careers: software developer, game programmer, mobile app developer, cloud developer

Note: students in computer science can expect more math courses and independent work, while students in software engineering can expect more software design courses and group work.

What's the difference between the two majors?

In computer science, you focus on programming, fundamental computing theory and computational problem-solving. Software engineering focuses on computing skills and professional software practices. A computer scientist makes the app work quickly and efficiently, while a software engineer leads the app development process and ensures it is user-friendly.

AREAS OF APPLICATION = CAREER CHOICES

Your area of application will be what you want to study, an area that interests you. Choose from more than 40 fields! You'll graduate with a unique skillset and competitive advantage.

With **computing and biology**, work in bioinformatics and support biological research that relies on the speed and accuracy of purpose-built software.

With **computing and psychology**, focus on human-computer interaction and the effects of interface design on usability.

With **computing and business**, join the world of e-commerce, create an electronic business application or inventory management system.

With **computing and your chosen area**, do what you love and land your dream job!

Sample First-Year Courses

Computer Science

- Programming
- Discrete Structures in Computing I
- Calculus I
- Intermediate Programming

Software Engineering

- Software Design I
- Programming
- Discrete Structures in Computing I
- Software Design II
- Linear Algebra I

* Course selection will vary by major.

Guelph Women in Computer Science (GWiCS)

This student organization fosters a supportive community for women in computing. They provide opportunities for their community such as events, technical workshops, and conferences.

Check out the Undergraduate Calendar for more available courses. Go to uoguel.ph/coursecal.

■ Available in co-op



Bachelor of Creative Arts, Health and Wellness*

uoguel.ph/bcahw

USE YOUR CREATIVE TALENTS TO IMPROVE HUMAN HEALTH.

As the first program of its kind in Canada, you'll explore the artistic, psychological, and therapeutic components of the creative arts and their connections to healthcare and human wellness.

“As a recognized Practicum and Internship site supervisor for the Canadian Association of Music Therapists, I believe now more than ever that students are looking for programs that speak to their progressive world view, reflect their understanding of creative arts and health, and prepare them for a meaningful career that will change both clients and larger communities.”

Mary Meads
Founding Director, Program Developer & Lead Music Therapist at Wellington Music Therapy Services
U of G Alumna, Bachelor of Arts, music (2012)

***Pending approval by the Ontario Universities Council on Quality Assurance.**

Majors

Pursue your artistic passion by choosing one of three majors:

- **MUSIC**
- **STUDIO ART**
- **THEATRE STUDIES**

See pages 18-19 for major descriptions.

Apply Art to Healthcare

Combine your major with required courses in Psychology and tie your learning together in your core Creative Arts courses (CREA), available only to students in this program.

YEAR 1

- Meet other students in CREA courses, where you'll learn about arts-based approaches to improving mental health, treating chronic pain, and assisting with community care.
- You'll be introduced to conversations about ethical and anti-oppressive practices within healthcare and wellness work.

YEAR 2

- You'll learn techniques from various creative arts media (music, drama, and art) and explore connections between these artistic practices and the study of various aspects of human behaviour, including the physical, the neurological, the social, etc.

YEARS 3 AND 4

- Begin to tackle important issues related to Indigeneity, equity, diversity, and inclusion as you learn about anti-oppressive practices, ethics in health care and community activist models, and professional responsibilities of health care workers.
- Learn the business and technical skills necessary for working in the healthcare sector, including certifications, governing boards, and professional regulations.
- Apply what you've learned throughout your degree to an Honours Capstone Project by researching a practical problem in healthcare that interests you the most.

Sample Careers

This program will prepare you with new and innovative training for career pathways in:

- Healthcare
- Education
- Community outreach
- Social work
- Therapy

You will be able to pursue graduate programs in:

- Education
- Counselling
- Music therapy
- Drama therapy
- Art therapy
- Psychology
- Medicine
- And more!

Sample First-Year Courses

- The Art of Health
- Music and Creative Practice
- Introduction to Performance
- Foundation Studio
- Introduction to Psychology
- Introduction to Black Canadian Studies
- Sexuality, Gender, Race, and Indigeneity

Check out the Undergraduate Calendar for more available courses. Go to uoguel.ph/coursecal.



Bachelor of Engineering

uoguel.ph/beng

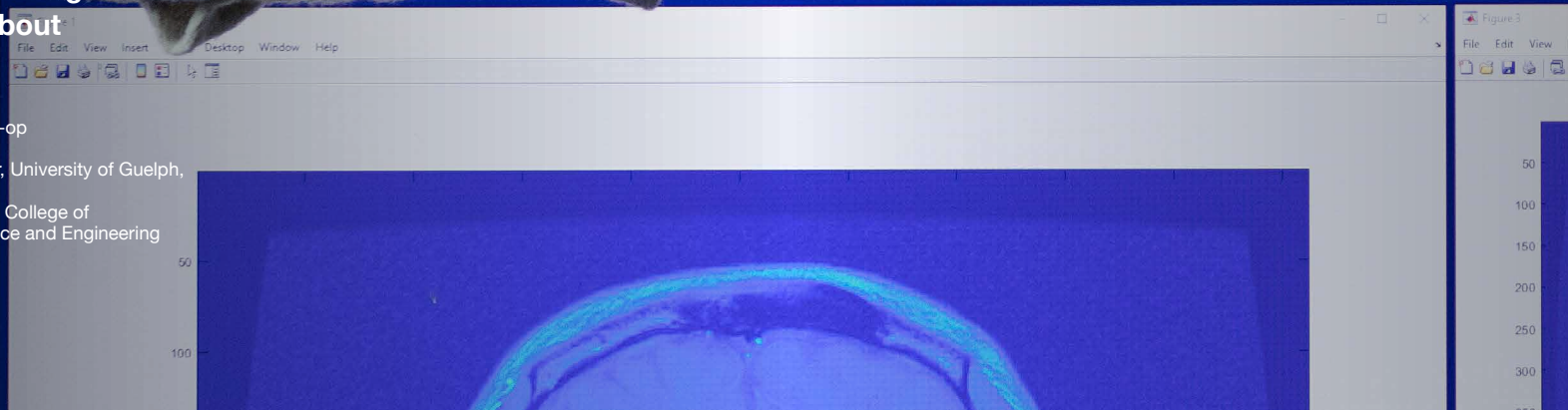
DESIGN. CREATE. SOLVE. REPEAT.

Engineering at the University of Guelph is where collaboration meets ingenuity. Unite with peers in other engineering disciplines and design creative solutions for the future.

“Biomedical engineering appealed to my interest in maths and the medical field and allowed me to choose from a unique selection of technical electives that gave me the opportunity to learn more about emerging technologies.”

Bhumi Patel

Bachelor of Engineering, biomedical engineering, co-op
High School: Oshwal Academy Mombasa, Kenya
Co-op Placements: COVID-19 Modelling Researcher, University of Guelph, Medical Device Repair Centre, Stryker
Campus Involvement: Second year representative of College of Engineering and Physical Sciences, Women in Science and Engineering member, Unibuddy Student Ambassador



Majors

BIOLOGICAL ENGINEERING ■

uoguel.ph/bio-eng

Biological engineering integrates a strong engineering and technology foundation with biological, biochemical, and environmental principles. Our interdisciplinary curriculum prepares engineers with specialized expertise to design and analyze new and sustainable ways to produce safe and abundant food, develop innovative environmental solutions for agricultural and urban waste management, and life-enhancing and life-saving products.

Sample Careers: bioprocess development engineer, product developer, research and development specialist, food/agro-environmental engineer

BIOMEDICAL ENGINEERING ■

uoguel.ph/biomed-eng

Apply engineering principles, innovate technologies, and design solutions to improve human health and quality of life. Study anatomy, physiology, human kinetics, electronics, mechanics, and computer science. Examine biosystems from molecular to a full-body scale to understand the repercussions of disease or injury. Explore elective opportunities in biomechanics, medical imaging, and biomedical signal analysis.

Sample Careers: prosthetic designer, physician, medical imaging, human factors engineer, research and development

COMPUTER ENGINEERING ■

uoguel.ph/comp-eng

Processors small enough to be embedded in concussion detectors. Autonomous mine detecting robots. Open source operating systems. Big Data and Artificial Intelligence systems. If any (or all!) of these sound like something you want to design, then computer engineering is for you.

Sample Careers: computer design engineer, software engineer, network engineer, embedded systems engineer

ENGINEERING SYSTEMS AND COMPUTING ■

uoguel.ph/eng-sc

What do prosthetic limbs, autonomous robots, and smart buildings have in common? They're all designed by multidisciplinary teams and run by microcontrollers and embedded processors. As an ESC student, you'll bridge the gap between disciplines while learning to design the computational brains that control these complex systems.

Sample Careers: controls engineer, systems engineer, software developer, robotics and automation engineer, mechatronics engineer

ENVIRONMENTAL ENGINEERING ■

uoguel.ph/env-eng

Fuse together engineering and science principles. Design treatment processes and systems to identify, prevent and clean up pollution of land, water and air. Gain globally-recognized skills and background to work in government both locally and internationally, and in consulting, industry and research. Explore elective opportunities that focus on areas such as water and wastewater treatment design, air emission control, watershed systems design and remote sensing and geographic information system (GIS) technology.

Sample Careers: air quality engineer, environmental consultant, water and wastewater engineer, remediation specialist, environmental engineer

■ Available in co-op

WOMEN IN SCIENCE AND ENGINEERING (WiSE)

WiSE promotes community outreach, professional development, and hands-on skills workshops for issues relating to women in science, technology, engineering and math (STEM) fields.

MECHANICAL ENGINEERING ■

uoguel.ph/mech-eng

Become pivotal to the design, manufacturing and maintenance of systems in mechanical engineering. Explore elective opportunities that broaden your general mechanical engineering knowledge base. Focus on areas such as sustainable energy, mechatronics, manufacturing system design, and biomechanics. Pursue limitless career options in the private and public sectors.

Sample Careers: manufacturing engineer, automotive engineer, robotics, automation engineer, process engineer, aerospace project coordinator

WATER RESOURCES ENGINEERING ■

uoguel.ph/wre

The world needs engineers to design solutions for the management of water and land resources. As a WRE student, you'll evaluate watershed management options and design flood and erosion control systems, water supply and treatment systems and water distribution networks, including water security systems. Choose electives in areas such as water conservation, river restoration, storm water management, meteorology and geology. Develop policies for the preservation of water systems, and use geographic information systems for state-of-the-art data management.

Sample Careers: hydrologist, municipal engineer, watershed monitoring specialist, facilities engineering analyst

UNDECLARED ■

uoguel.ph/engundec

Want an engineering degree but still undecided on a specific major? Select the Undeclared option and follow the first semester of your preferred major(s). Finalize your choice by the end of your first year.

Note: If you are interested in co-op, we strongly recommend you apply to co-op programs directly from high school. In-course students can be considered for co-op, but space is limited. Eligibility is subject to your University of Guelph average and availability in the program and major.

- Available in co-op
- Available in first-year only

Sample First-Year Courses

Semester 1

- General Chemistry 1
- Engineering and Design 1
- Calculus 1
- Physics with Applications
- Engineering Analysis

Semester 2

- Engineering Mechanics 1
- Calculus 2
- Introductory Electricity and Magnetism
- Programming
- One other as described in the program guide

* Course selection will vary by major.

Check out the Undergraduate Calendar for more available courses. Go to uoguel.ph/coursecal.

Note: While not required, it is recommended that students applying to Computer Engineering or Engineering Systems & Computing have some programming knowledge or experience.



Bachelor of Indigenous Environmental Science and Practice

uoguelph/biesp

INFORMED LEADERSHIP AND PROBLEM SOLVING.

Braid together Indigenous and Western science and discover how history, colonization, law and technology impact our environment.

“This exciting new program brings together my passion for pursuing intersectional environmentalism, supporting LGBTQ2IA+ rights, and creating change. It challenges me to harmonize my comprehension of Western science with traditional Indigenous knowledge and teachings.”

Ava Augustine

Bachelor of Indigenous Environmental Science and Practice
High School: Kingsville District High School, Kingsville, Ontario
Campus involvement: Guelph Poets Society; Photography Club; BIESP sub committee;
School of Environmental Sciences Undergrad Committee; BIESP representative for the OAC
University Senate

Scholarships: Honor roll, University of Guelph; Academic Leadership Award; nominee for the Carl Rom Colthoff Experiential Learning Award (2023); Mucci Farms Grow With Us Award (2020).

Program Highlights

Participate in field trips to Indigenous communities, discussion circles and ceremonies and interactive labs. Learn from Indigenous Elders and Knowledge Holders. Expand your experience and gain important career-focused skills while working during your co-op terms.

YOU ARE AN AGENT OF CHANGE

Create a better future for all beings. Our existence is intertwined with the rocks, the plants, the finned, the furred, the feathered, the four-legged, two-legged, many-legged and no-legged, those who creep and walk and swim and fly — all our relations. Support a world that is more respectful and responsive. As a graduate of this program, you will be able to braid together Indigenous and Western science and knowledge and see the environment through a uniquely valuable lens that is in demand by communities, governments, organizations and businesses.

Sample Careers: environmental scientist, environmental consultant, environmental policy maker, environmental educator, environmental lawyer or advocate.

Sample First-Year Courses

- Introduction to Indigenous Environmental Science and Practice
- Calculus I
- General Chemistry I
- Natural History of the Great Lakes Region
- Indigenous Knowledge for Environmental Science and Practice
- Indigenous Language and Culture
- Accounting

Check out the Undergraduate Calendar for more available courses. Go to uoguel.ph/coursecal.

■ Available in co-op



Bachelor of Landscape Architecture

uoguel.ph/bla

A ONE-OF-A-KIND DEGREE, BY DESIGN.

Design communities, urban centres, and outdoor recreational areas anywhere in the world!

“My interest in design and desire to improve the lives of others led me to the BLA program. The idea of designing public spaces is thrilling to me, knowing that those spaces start out as an idea drawn out on paper. The courses are designed to introduce students to new skills such as sketching, detail drawing, visual rendering, 3D modelling, and concept development. Personally, the most useful skill this program has taught me is presenting and public speaking – it has given me so much confidence going into my career!”

Vincent Fracchioni

Bachelor of Landscape Architecture

High School: Blessed Trinity Catholic Secondary School, Smithville, Ontario

Campus Involvement: Landscape Architecture Student Society (LASS) | co-president

Scholarships: Ontario Association of Landscape Architects Scholarship, Dean's List Award (Semester 1-8)

Program Highlights

Learn from talented professionals and have the freedom to explore ideas. Your projects are self directed and build your verbal and design skills. Studio projects and design workshops help you understand the professional methods, and students find work placements through our large (and global) alumni network.

Sample Careers: landscape architect, urban designer, environmental design and landscape rehabilitation, resorts and destination designer

Sample First-Year Courses

- Design and Communication Studio
- History of Cultural Form
- Planting Design
- Materials and Techniques
- Philosophy of the Environment

Check out the Undergraduate Calendar for more available courses. Go to uoguelph.ph/coursecal.

BACKGROUND INFORMATION FORM (BIF)

You are required to submit a Background Information Form (BIF) as part of your application to showcase your understanding of and passion for the profession. The BIF deadline is March 1, 2024 and can be found at admission.uoguelph.ca/bla_bif.

**THIS IS THE ONLY
ACCREDITED PROGRAM
OF ITS KIND IN CANADA.**

*Accredited by the Landscape Architecture Accreditation Council (LAAC) of the Canadian Society of Landscape Architects, meeting the educational requirements for entry into the professional associations of landscape architects across Canada, North America, and abroad.



Bachelor of Mathematics

uoguel.ph/bmath

PREPARE FOR A REWARDING CAREER.

Join a tradition of excellence in both teaching and research as a student in the Department of Mathematics & Statistics. Your experience will be enhanced by the personal involvement of faculty who passionately share their expertise and interests in a variety of research areas. You will find a warm and supportive learning environment, an excellent community of peers, and well-designed courses that result in a first-rate education.

Major

MATHEMATICAL SCIENCE

uoguel.ph/mathsci

The Mathematical Science major provides students with a strong foundation in mathematics and statistics, leaving you well prepared for a wide variety of rewarding career opportunities. Mathematics and statistics play vital roles in many fields of study, including medicine, psychology, engineering, and computer science. Knowledge of mathematics and statistics is considered essential in the modern workplace, and careers in this field consistently rank near the top in lists of the best careers.

Students in the program can select an area of emphasis in mathematics or statistics.

Sample Careers: teacher, medical researcher, financial analyst, fraud analyst, risk analyst, cryptographer.

MATHEMATICAL SCIENCE GRADS HAVE GONE ON TO WORK AS:

- Policy Analyst, OMAFRA
- Biostatistician, Cancer Care Ontario
- Survey design and implementation, Statistics Canada
- Mathematics Researcher, Canadian Imperial Bank of Commerce
- Mathematical modelling for minimizing risk in power failures, Ontario Power Generation
- Mathematics Programmer producing mathematical software tools, Maplesoft
- University Professor and Secondary School Mathematics Teacher
- Clinical Epidemiologist, Ontario Ministry of Health & Long Term Care



Bachelor of One Health ■

uoguel.ph/boh

BECAUSE HUMAN, ANIMAL AND ECOSYSTEM HEALTH ARE ALL ONE HEALTH.

Learn how the health of one impacts the health of all by exploring both the scientific and social factors that influence complex health challenges.

"I chose U of G for its program options and leading research in animal and human health. This new program is exciting for me because it offers so many different perspectives, from zoonoses and medicine to agriculture and climate change. Everyone's passions shine through when we do group projects, and we end up creating a very holistic representation of a wide variety of topics! I also love the small size of the BOH program, it provides opportunity to build closer connections with the professors and other students!"

Leah Van Raalte

Bachelor of One Health

High School: Guido de Brès Christian High School, Waterdown, Ontario

Campus Involvement: One Health Student Committee, Financial Officer, Dragon Boat Club, STEM Students Guelph

Program Highlights

Offered in regular and co-op, the Bachelor of One Health program will give you the skills and knowledge to succeed in research or as a practitioner in the fields of human or animal health, public health, agri-food industries, health technology, or resource and ecosystem management across private industry, governmental and non-governmental organizations. You'll also be prepared to pursue professional programs such as human or veterinary medicine and law or enter in to graduate work.

Choose one of four areas of emphasis depending on your interests:

- Disease, Complexity and Health
- Environment, Food and Health
- Policy, Economics and Health
- Culture, Society and Health

Sample First-Year Courses

- Biological Anthropology
- Biological Concepts of Health
- Introduction to Molecular and Cellular Biology
- Human Impact on the Environment
- Discovering Biodiversity
- Introduction to One Health

Check out the Undergraduate Calendar for more available courses. Go to uoguel.ph/coursecal.

■ Available in co-op



Bachelor of Science

uoguel.ph/bsc

CONTRIBUTE TO DISCOVERIES THAT WILL AID HUMANKIND, OUR PLANET... AND BEYOND.

Studying science here won't just expand your mind, it'll expand your options.

“One of the many reasons I love the physics program is how small and tight-knit our student community is. Lots of us study, chat, and relax in the physics lounge (MacNaughton 317). It is here where I have developed many close friendships with students in upper and lower years. This community makes me feel like I belong to a kooky little physics family, one that motivates me to succeed and be kind to myself.”

Ricky Summerlin

Bachelor of Science, physics

High School: Belle River District High School, Belle River, Ontario

Campus Involvement: Departmental Summer Research Assistantships; V.P. Communications, Physics and Astronomy Club; Organizing committee co-chair, 2022 Canadian Undergraduate Physics Conference; FIGS (Food Insecurity Group Support) member

Scholarships: Honours Physics Scholarship (2019), University of Guelph Entrance Scholarship (2019), Copernicus Scholarship in Physics (2020), Dean's Scholarship (2021), J. L. Campbell Scholarship (2022), Marie Curie Scholarship in Physics (2023)

Majors

ANIMAL BIOLOGY

uoguel.ph/bscabio

Explore genetics, physiology, behaviour, welfare, and nutrition. Obtain a broad overview of animal production systems and animal bioscience, and learn the science of breeding, feeding, care and management of agricultural animals. Expand your knowledge with electives, senior courses and undergraduate research projects. Build a career in veterinary medicine, the nutrition industry, animal care and welfare, or education and research. Also see B.Sc. (Agr.) Animal Science.

Sample Careers: animal bioscience specialist, animal behaviourist/animal care, veterinarian, and product quality controller

BIOCHEMISTRY ■

uoguel.ph/bscbiochem

Combine practical laboratory training in biochemistry, molecular biology and microbiology with courses in areas such as immunology, enzymology or physiology. Gain real-world experience from co-op work terms, and complete an undergraduate research project. Enjoy challenging careers in medicine, pharmacy, academic research, governmental regulatory work, or in related business fields.

Sample Careers: agriculture and pharmaceutical regulatory affairs specialist, biotechnology clinical program manager, healthcare sales account manager, research data scientist

BIOLOGICAL AND PHARMACEUTICAL CHEMISTRY ■

uoguel.ph/bscbpc

Discover the opportunities when you combine the practical application of complex chemistry with biological science. Learn in subject areas like microbiology and opt for hands-on laboratory training in pharmaceutical analysis and product formulations.

Sample Careers: cancer researcher, pharmacist, forensic pharmacist, and biopharmaceutical analyst

■ Available in co-op

BIOLOGICAL SCIENCE*uoguel.ph/bscbio*

Design a major to fit your interests and career goals with biological science. Foundation courses cover molecular biology and genetics, biochemistry, evolution, physiology, ecology and statistics. Build on this with science electives chosen from a broad range of subject areas. Add a minor in the arts, social sciences, sciences, or business. Pursue an international exchange. Gain the entrance requirements for professional programs including medical and veterinary schools.

Sample Careers: director of healthcare research, business biotechnology development manager, terrestrial ecologist, sustainability consultant, physician, veterinarian, quality assurance specialist

BIO-MEDICAL SCIENCE*uoguel.ph/bscbiomed*

Play a role in building a healthier society with bio-medical science. Focus on the prevention of disease and the maintenance of good health through the study of nutrition, physiology, anatomy, genetics and epidemiology. Plan, conduct and analyze your own research project and apply the knowledge and skills gained through this major to professional studies, graduate programs or a career in the health sciences.

Sample Careers: clinical research assistant, medical science liaison officer, policy analyst, veterinarian, physician, healthcare professional, health business systems analyst

BIOMEDICAL TOXICOLOGY*uoguel.ph/bscbiotox*

Explore the effects and mechanisms of action of toxic substances in biomedical toxicology. Study substances of interest including pharmaceuticals, metals, industrial chemicals, and natural toxins. Examine toxicological testing required to ensure the safety of new drugs, consumer products, pesticides and industrial chemicals before they go to market. Develop a strong foundation in science disciplines pertinent to toxicology and forge a related career.

Sample Careers: regulatory affairs and toxicology specialist, clinical research scientist, respiratory research manager, clinical trial manager, healthcare assessment officer

CHEMISTRY*uoguel.ph/bscchem*

Face the challenges of our world today — from the development of space age materials to the synthesis of new pharmaceutical products — with chemistry. Gain practical laboratory training; complete research with award-winning faculty and participate in the co-op option for work experience. Study physical, theoretical, analytical, organic and inorganic chemistry to harness analytical and practical skills for graduate or professional programs, and your career.

Sample Careers: analytical chemist, consumer product chemist, environmental analyst, and physician

FOOD SCIENCE*uoguel.ph/bscfood*

Explore the processing and product development of safe and healthy foods, and fill the gap between the production of farm goods and the year-round delivery of food products to the global consumer. Apply your skills learned in chemistry, food processing, microbiology, quality assurance and sensory evaluation to the development of a food product from idea generation through to product marketing. To become a Registered Dietician, please see B.A.Sc. Applied Human Nutrition.

Sample Careers: food safety research analyst, food product developer, technical sales and food business entrepreneur

HUMAN KINETICS*uoguel.ph/bschk*

Explore the biological aspects of human movement, function, and performance in health, aging, and chronic disease. Study nutrition, physiology, biomechanics, anatomy, genetics, and genomics. Experience comprehensive hands-on laboratories in exercise testing and assessment of human movement, and an in-depth dissection-based anatomical study of the human body. Pursue graduate work or a variety of related professional programs. If you're interested in kinesiology, please see the University of Guelph-Humber B.A.Sc. Kinesiology program.

Sample Careers: pharmaceutical regulatory affairs associate, disabilities case manager, health business systems analyst, physiotherapist, specialized rehabilitation practitioner

MARINE AND FRESHWATER BIOLOGY*uoguel.ph/bscmfb*

Explore the ecology of freshwater and marine environments, and work with aquatic organisms in the state-of-the-art Hagen Aqualab. Examine management and conservation issues. Participate in field courses in arctic, tropical or temperate regions, or in exchange programs with universities in Europe, New Zealand, Australia and Fiji. Prepare for related post-graduate work, and pursue careers in biology, management and conservation, aquaculture, biotechnology, education, and research either in government or the private sector. Also see B.Sc.(Env) Ecology.

Sample Careers: aquatic biologist, fish habitat biologist, environmental communications coordinator, research technician - oil industry, marine ecosystem scientist

MICROBIOLOGY*uoguel.ph/bscmicro*

Study the smallest and most predominant organisms on the planet: bacteria, archaea, viruses, yeasts and moulds. Explore varied topics from deep sea ecosystems to the normal microbial inhabitants of the human body, to practical matters of public health. With optional co-op, you can discover the medical, industrial and environmental impacts of microorganisms and learn about the methods used to study and utilize them for biotechnology or bioremediation.

Sample Careers: food safety advisor, biological activity technologist, global pharmaceutical partner analyst, medical microbiologist, biotechnology business development manager

MOLECULAR BIOLOGY AND GENETICS*uoguel.ph/bscmbg*

Explore genomes, the genetics of microorganisms, plants and animals, and the structure and function of cells. Discover how significant advances in molecular and cellular biology can be applied to gene therapy, genetic testing, biopharmaceuticals or crop production. Participate in research projects with professors to gain additional hands-on training for a career in this exciting field.

Sample Careers: research analyst, global medical affairs lead, clinical research scientist, clinical data manager, laboratory coordinator

NEUROSCIENCE ■

uoguel.ph/bscneuro

Explore the brain, the most poorly understood organ in the human body, and the source of many disorders and diseases. You will study contemporary problems and research tools that further your knowledge of the nervous system. You can structure your program around aspects of molecular/cellular, behavioural and cognitive, and biomedical neuroscience, providing you with a foundation for a fulfilling career.

Sample Careers: social policy researcher and advisor, public relations consultant, drug safety officer, medical director, mental health clinician, robotics project manager

NUTRITIONAL AND NUTRACEUTICAL SCIENCES ■

uoguel.ph/bscnns

Tackle nutrition-related problems in the food, pharmaceutical and natural health product industries. Understand how nutrients, phytochemicals, toxins and food processing products affect the body. Work in international health and nutrition organizations, government regulatory bodies and advisory agencies, or pursue related graduate studies. To become a Registered Dietitian, please see B.A.Sc. Applied Human Nutrition.

Sample Careers: food and nutrition formulation specialist, regulatory research and development, senior health policy analyst

■ Available in co-op



PHYSICAL SCIENCE

uoguel.ph/bscps

Create your own curriculum and explore physical science. Focus on chemistry, computing and information science, mathematics, physics or statistics. Choose a minor in subjects like biotechnology, psychology or business to meet your career goals or pursue professional schools.

Sample Careers: scientific writer, teacher, investment analyst, and atmospheric scientist

PHYSICS ■

uoguel.ph/bscphysics

Explore the exotic aspects of the universe in physics. Study black holes and subatomic particles, develop exciting modern devices like particle accelerators and gamma-ray spectrometers. Acquire quantitative skills and logical thinking. Take specialized courses in experimental laboratory techniques, optics and science communication. Be well-equipped for high-tech careers in industry, government or academia.

Sample Careers: fibre optics and photonics researcher, meteorologist/climatologist, forensic scientist, and nuclear energy specialist

WILDLIFE BIOLOGY AND CONSERVATION ■

uoguel.ph/bscwbc

Explore prominent worldwide issues such as the depletion of natural resources and global climate change. Study ecology and the evolution of organisms to begin tackling these issues, and gain an understanding of plant and animal conservation. Practical experience gained in lab, field and research courses, combined with knowledge of strategies for conservation, management and policy, will broaden future opportunities in this field. Also see B.Sc.(Env) Ecology.

Sample Careers: planning ecology technician, environmental assessment officer, terrestrial and wetland biologist, program and outreach coordinator

ZOOLOGY

uoguel.ph/bsczoo

We share planet Earth with 30 million other animal species, and virtually nothing is known about most. Gain deeper insight into the diversification of life through a broad foundation in ecology, evolution, and vertebrate and invertebrate biology. Participate in a field course, international exchange, or research project, and contribute to our knowledge of the animal kingdom.

Sample Careers: management biologist, wildlife forensic scientist, veterinarian, sustainability manager

Sample First-Year Courses

Semester 1

- Biology I
- General Chemistry I
- Physics I
- Calculus I
- One Elective


Semester 2

- Biology II
- Biology III
- Calculus II or elective
- General Chemistry II
- Physics II
- Mathematical or computational science elective or liberal education elective

* Course selection will vary by major.

Check out the Undergraduate Calendar for more available courses. Go to uoguel.ph/coursecal.

■ Available in co-op



“As a science student, I spend a lot of time in the Summerlee Science Complex, both in the labs and in the beautiful atrium, which is a favourite study space for many students. My courses help me build on my laboratory technical skills while learning many experimental procedures, both independently to gain confidence in my skills, and with my peers as we assist each other and learn together. My program has a great community of supportive students - it’s a great dynamic and part of what I love about being in the lab and the hands-on component of my learning.”

Sarayna Bala

Bachelor of Science, microbiology, co-op
High school: Cardinal Ambrozic Catholic Secondary School, Brampton, Ontario
Campus Involvement: Executive of Publications for Guelph’s chapter of the Canadian Association for Research in Regenerative Medicine; Student Volunteer Notetaker; peer mentor for first year students; Gryphons Nest online community mentor for off-campus students.



Bachelor of Science in Agriculture

uoguel.ph/bscag

**AGRICULTURE IS ABOUT
FOOD, SCIENCE, BUSINESS,
TECH AND SUSTAINABILITY.**

By 2050, there will be 9.8 billion people in the world to feed. With this degree you will be able to work anywhere in the world.

“My time at U of G gave me the freedom I needed to decide on my future career goals as well as the skill set to be able to do these things. I’ve strengthened my knowledge in agriculture and networked with some of the best in the business, and gained valuable professional experience working as a summer student for the Ontario Ministry of Agriculture, Food and Rural Affairs. Being so involved with my program while also playing goalie for the Men’s Varsity Hockey team is beyond what I could have hoped for and doing it at Canada’s “food university” made my experience even more incredible!”

Brendan Cregan

Bachelor of Science in Agriculture, animal science

High School: Charles P. Allen High School, Bedford, Nova Scotia

Campus Involvement: Gryphons Men’s Varsity Hockey Team; Student research assistant, population medicine and reproduction
Scholarships: William L. McEwen OAC ‘43 and Rachel McEwen OVC ‘18 Men’s Scholarship; Hensall District Co-op Men’s Hockey Scholarship; President’s Golf Tournament Scholarship; Al Singleton Hockey Scholarships; QMJHL Player tuition bursary; OUA Queens Cup champion (2019-2020)

WORK IN ONE OF CANADA'S LARGEST INDUSTRIES

Majors

ANIMAL SCIENCE ■

uoguel.ph/ansci

If you want to make a positive impact on how we raise animals, agriculture is the place to be. Explore how you can improve welfare and performance through nutrition, breeding and care. You will select courses that meet your specific interests (nutrition, welfare and genetics) to prepare yourself for the career you want in animal production and health. Students also take this major as an entry point to the field of veterinary medicine. Also see B.Sc. Animal Biology.

Sample Careers: livestock nutritionist, genetics consultant, and sales representative

CROP SCIENCE ■

uoguel.ph/crop

There are so many issues you can tackle as a student in crop science! You can focus on the production of field crops for food, fuel, and biomaterials. You can learn about the latest scientific advancements that could solve problems in agronomy and cropping, study how to feed the world's growing population, and protect the environment.

Sample Careers: agronomic advisor, crop production specialist, pest management specialist, plant breeder

HONOURS AGRICULTURE ■

uoguel.ph/hon-ag

Interested in agriculture, but can't pick your favorite part? This major allows you to explore all of your interests. Choose the courses and research projects that link to your career goals. Your studies will combine core "ag" science with courses in business, animals, plants and the environment. Plus, graduates of this choose-your-own-adventure major have flexibility when entering the job market.

Sample Careers: agriculture consultant, educator, government regulator/advisor and agriculture journalist

HORTICULTURE ■

uoguel.ph/hort

Plants are used for food, flowers, and medicine. Discover the systems behind plants and how to use science to improve the horticultural industry. Gain experience in greenhouses and controlled environment systems, explore pest management, plant physiology and plant breeding.

Sample Careers: agronomist, horticulturalist, greenhouse facility manager

Sample First-Year Courses

- Intro to the Agri-Food Systems
- Biology of Plants and Animals in Managed Ecosystems
- General Chemistry I and II
- Economics of the Agri-Food System

Check out the Undergraduate Calendar for more available courses. Go to uoguel.ph/coursecal.

Students do not apply to a specific major as they complete common courses in first year. This provides the flexibility to select one of four majors after first year based on your interests!

■ Available in co-op



Bachelor of Science in Environmental Sciences

uoguel.ph/bscenv

ENVIRONMENTAL SCIENTISTS ARE KEY TO SAVING OUR PLANET.

Use your passion and brain power to turn things around.

“I knew that I wanted to study environmental science but I wasn’t sure which area I wanted to get into. The program at U of G gave me the flexibility to choose a major at the end of my first year and gave me added work experience through co-op. I’ve also gained important management and business skills through my minor in Sustainable Business.”

Nidhi Nidhi

Bachelor of Science in Environmental Sciences, environmental economics and policy, co-op

High School: GEMS Westminster School, Dubai, United Arab Emirates

Co-op Placements: Digital Marketing and Events Recruiter at the School of Computer Science; Research Assistant at Corteve

Agriscience; ISURA Marketing Assistant with the Research Programs at the Ontario Agricultural College

Campus Involvement: University of Guelph Sustainability Office; Mentor Program with the Wellington Community Project Serve;

UoGA; Tour Guide; Book Club Facilitator; telethon caller with Admission Services; WWF Living Planet Leader; Undergraduate Senate

for Program of Environmental Sciences

Scholarships: Van Acker – Nicholls Scholarship, Class of '67 Ontario Agricultural College Centennial Scholarship

Majors

ECOLOGY ■

uoguel.ph/ecol

Explore how plants, animals and microbes interact with their surroundings. Learn how humans can help or hinder these connections. Lectures, labs and field trips prepare you to make ecologically sound decisions in your career.

Sample Careers: habitat conservation and restoration consultant, environmental protection agent, scientific writer/editor, and conservation ecologist

ENVIRONMENT AND RESOURCE MANAGEMENT ■

uoguel.ph/erm

Balance biophysical sciences with social sciences to prepare society to respond to environmental change. Gain technical skills that are fundamental to monitoring the biophysical environment, learn about geographic information systems (GIS) and remote sensing, and build experience in field-based data collection. Prepare for a career that lets you work in the laboratory, field, and office and be involved in exciting advances that create and implement effective solutions to manage natural resources and impactful environmental policies.

Sample Careers: research manager or environmental monitoring project lead, consultant in primary sectors such as forestry, mining and fisheries, mapping and GIS analyst, park ranger or conservation area manager, environmental science advisor or policy analyst

ENVIRONMENTAL ECONOMICS AND POLICY ■

uoguel.ph/eep

Combine science, economics, law, and politics to offer creative solutions. Set environmental policy and sway behaviour. Study the factors that encourage people to take action and change consumer behaviour.

Sample Careers: environmental policy analyst, resource management specialist, environmental law, and business sustainability manager

ENVIRONMENTAL SCIENCES ■

uoguel.ph/env-sci

Study the Earth's chemical, physical and biological processes. Solve our most complex environmental problems related to water, air and land use. Experiences in labs and on field trips will prepare you for many career options.

Sample Careers: environmental scientist, air and water quality monitoring specialist, and environmental coordinator/analyst

Sample First-Year Courses

- Discovering Biodiversity
- General Chemistry I and II
- Introduction to Environmental Sciences
- Calculus I
- Introduction to Environmental Economics, Law & Policy
- Introduction to the Biophysical Environment

Check out the Undergraduate Calendar for more available courses. Go to uoguel.ph/coursecal.

Students will enter this program with an undeclared major and complete common courses in first year. This provides the flexibility to select one of four majors after first year based on our interests.

■ Available in co-op



Doctor of Veterinary Medicine

ovc.uoguelph.ca

**CONTRIBUTE TO THE WORLD
OF MEDICINE, CARE, SCIENTIFIC
DISCOVERY AND COMMUNITY.**

The Doctor of Veterinary Medicine program is accredited by the Canadian and American Veterinary Medical Associations.

“I want to help improve animal welfare and educate owners, and OVC is the perfect place for me to learn how to do that. There are also so many ways to get involved as a DVM student, whether it be through clubs, class council, or shadowing experiences. With so many student-run clubs, there are always plenty of hands-on opportunities available and interesting lunch-and-learns to attend! This program has helped me learn many new skills, my favourites from this past year being catheterization and intubation, and how to communicate with clients.”

Maggie Daoust

Doctor of Veterinary Medicine

High School: Marymount Academy, Sudbury, Ontario

Campus Involvement: OVC Class of 2025 Co-President, OVC Nutrition Club President, OVC Equine Club Treasurer,

OVC Tour Guide, OVC Student Equipment Fund Class of 2025 Representative

Scholarships: Scandrett Family Scholarship in Veterinary Medicine, OVC Alumni Association Spirit Prize (Phase 2)

FAQs

WHEN CAN I APPLY TO THE DVM PROGRAM?

Before applying to the DVM program, you must complete two years of a full-time undergraduate degree and eight prerequisite courses. You can apply to the DVM program in your third year.

Note: Full-time is a minimum of five one-semester courses or 15 credit hours per semester.

WHAT COURSES SHOULD I TAKE IN HIGH SCHOOL?

Take courses that provide you with the admission requirements for your program of interest. You can pursue any degree program so long as it allows you to complete the prerequisites you need to apply to the DVM program. If you're interested in a science program you should take high school Biology, Chemistry, Physics, Advanced Functions or Calculus.

HOW DO I GET VETERINARY EXPERIENCE?

You can get experience through job shadowing, working, or volunteering with veterinarians. To find a listing of licensed veterinarians and clinics in Ontario, go to the College of Veterinarians of Ontario website at cvo.org. If you own an animal, start by asking your own veterinarian if you can volunteer at their clinic. You can also contact local stables, animal shelters, zoos, and food animal producers to see if they offer volunteer/work positions.

While in university, check if your school has a laboratory animal facility there, and if so, connect with the veterinarian in charge. You can also participate in research with a veterinarian in academia or job shadow one of the many veterinarians working in the government.

HOW CAN I GAIN EXPERIENCE WITH ANIMALS?

Work with livestock, equestrian activities and any other animal-related hobby or experience. Contact local stables, animal shelters, zoos, and food animal producers for volunteer/work positions.

Experience does not include personal animal ownership.

WHICH UNIVERSITY SHOULD I ATTEND FOR MY UNDERGRADUATE STUDIES?

If you've attended an accredited university or college and completed the minimum admission requirements you can apply to the OVC. If you are completing your undergraduate degree at another institution, please contact the DVM Admission Counsellor at admdvm@uoguelph.ca to ensure the courses you select meet the prerequisite requirements.

For more FAQs, please visit: ovc.uoguelph.ca

For more information about DVM admission, please email admdvm@uoguelph.ca.

Admission Requirements

- Completion of a minimum of two years of a full-time undergraduate degree.
- Completion of eight prerequisite courses completed at the degree level: cell biology; biochemistry; genetics; statistics; two biological sciences; and two humanities and/or social sciences.
- Experience with veterinarians and animals
- Submission of a Background Information Form
- Letters of Reference (two must be from veterinarians with whom you have worked)
- An interview
- Extracurricular involvement
- CASPer Situational Judgment Test
- Canadian applicants, including dual citizens, must be residents of Ontario. A "resident" is someone who has resided in Ontario for 12 months, exclusive of time spent in a post-secondary institution.

Career Choices for Vets in Canada

Clinical Careers (75%)

- Companion animal 45%
- Mixed animal 21%
- Large animal 9%
- Government 10%
- Industry 6%
- Research, teaching and academia 5%
- Other 4%

Non-Clinical Careers (25%)

#1

IN CANADA

#3

IN NORTH AMERICA

#5

IN THE WORLD

(QS, 2023)



Associate Diplomas

uoguel.ph/diplomas

UNIQUE, TWO-YEAR DIPLOMAS TO GET YOUR CAREER GOING QUICKLY!

“I know that my decision to be involved and engaged throughout my time here has been so important to my success in the Turfgrass Management program. The workshops, debates, and discussions I’ve participated in helped me learn to address agronomic, social, political and philosophical issues within our industry and will allow me to solve real-world problems. I’ve already accepted a management position with the turfgrass industry once I’ve graduated and I look forward to applying everything I’ve learned at U of G in my career. ”

Elliott Gonsalves

Associate Diploma in Turfgrass Management

High School: Cardinal Carter Catholic High School, Aurora, Ontario

Internship: Beacon Hall Golf Club

Campus Involvement: DTM Curriculum Committee, Turf Club

Scholarships: OGSA 2022 Turfgrass Education Award, CGSA 2022 Scholarship

TURFGRASS MANAGEMENT ▲ ■

OFFERED AT THE U OF G CAMPUS

admission.uoguelph.ca/DipTurf

Interested in science, sports and being outside? You've found your program. Launch your career in sports field and golf course management, park operations or sod production. Courses blend scientific study with hands-on learning, field trips and a co-op workterm. You'll also use the lab facilities of the University, including the Guelph Turfgrass Institute. Leave with in-demand skills and a network of turf professionals, employers and mentors.

Sample Careers: sports field manager, golf course superintendent, lawn care specialist, sod production manager, and sales manager

Application Note: Admission is determined by a combination of your academic average and evaluation of the required Background Information Form (BIF). The BIF can be found at admission.uoguelph.ca/supforms.

Recommended Submission Deadline: February 16, 2024. We will continue to accept BIF submissions after this date pending space availability.

AGRICULTURE ■ ■

OFFERED AT THE RIDGETOWN CAMPUS

ridgetownc.com/future/dagr/

Prepare yourself with the science, tech and business know-how needed to run an "ag-business". Focus on areas in crops, business, livestock, or fruit and vegetables.

Sample Careers: agricultural finance manager, feed sales manager, precision agriculture technician, farm manager, and crop consultant

ENVIRONMENTAL TECHNICIAN ■ ■

OFFERED AT THE RIDGETOWN CAMPUS

ridgetownc.com/future/denm/

Build your skills to secure a career in conservation, water or resource management. Learn in labs, field trips and an industry work placement.

Sample Careers: environmental farm plan consultant, environmental technician, renewable energy plant operator, and water treatment plant operator

EQUINE CARE AND MANAGEMENT ■ ■

OFFERED AT THE RIDGETOWN CAMPUS

ridgetownc.com/future/decml/

Enhance your knowledge with applied skills in equinecare, management and business. Learn about nutrition, breeding, health, and complete an industry work placement.

Sample Careers: equine facility manager, equine marketing and sales representative, show groom

HORTICULTURE ■ ■

OFFERED AT THE RIDGETOWN CAMPUS

ridgetownc.com/future/dhrt/

Find your career in one of the many greenhouse and landscaping options. Enhance your creativity and skills through practical labs in our on-campus greenhouses.

Sample Careers: assistant greenhouse grower, horticultural technician, cannabis production assistant, and parks and recreation technician

VETERINARY TECHNOLOGY* ■

OFFERED AT THE RIDGETOWN CAMPUS

uoguel.ph/dipvet

Receive the specialized knowledge and skills required to become a companion or large animal veterinary technician. This program is accredited by the Canadian and American Veterinary Medical Association, and the Ontario Association of Veterinary Technicians.

Sample Careers: veterinary technician, government inspector, pharmaceutical technical representative, and specialty or referral hospital technician

*The Associate Diploma in Veterinary Technology is offered in both a 2- and 3-year format. The 2-year conventional format is all on-campus and runs from September through April. The 3-year alternative format offers some courses by distance learning and three consecutive summer semesters at the Ridgetown Campus.

- Available in co-op
- Offered in 2 years
- ▲ Mandatory co-op
- Offered in both 2 and 3 year formats

I KNOW EXACTLY WHAT I WANT TO STUDY



University of Guelph-Humber

guelphhumber.ca/futurestudents

AN HONOURS DEGREE AND DIPLOMA IN 4 YEARS!

Why Choose the University of Guelph-Humber?

Gain knowledge and hands-on experience. You will learn at the University of Guelph-Humber campus, located in Toronto. Earn an honours degree from the University of Guelph and a diploma from Humber, concurrently.

UNIVERSITY OF
GUELPH
HUMBER

TORONTO, ON

Workplace experience is built into every program!

BUSINESS

Honours Bachelor of Business Administration
+
Diploma in Business Administration

COMMUNITY SOCIAL SERVICES

Honours Bachelor of Applied Science
in Community Social Services
+
Social Service Worker Diploma

EARLY CHILDHOOD STUDIES

Honours Bachelor of Applied Science
in Early Childhood Studies
+
Diploma in Early Childhood Education

JUSTICE STUDIES

Honours Bachelor of Applied Science in
Justice Studies
+
Diploma in Police Foundations or Community
and Justice Services

KINESIOLOGY

Honours Bachelor of Applied Science in Kinesiology
+
Diploma in Fitness and Health Promotion

MEDIA AND COMMUNICATION STUDIES

Honours Bachelor of Applied Arts in Media and
Communication Studies
+
Diploma in Media Communications

PSYCHOLOGY

Honours Bachelor of Applied Science in Psychology
+
Diploma in General Arts and Science
+
Optional certificate (granted by Humber) in
Intercultural Relations, Organizational Behaviour
or Research Skills and Analysis

Admission Requirements

- Ontario Secondary School Diploma (or equivalent).
- A minimum of six 4U/M courses (or equivalent), inclusive of subject requirements.
- Estimated cut-off admission average for all programs is 75 – 80%. Please note a minimum 70% admission average is required to apply.

Applying

- Canadian high school students are encouraged to apply by January 15, 2024 to be considered for all rounds of admission. Transfer and international students looking for specific application deadlines should visit guelphhumber.ca/futurestudents.

Scholarships

- Founders' Academic Merit Scholarship
\$36,000 (\$9,000 x 4)
- Vice-Provost Entrance Scholarship
\$20,000 (\$5,000 x 4)
- Renewable Entrance Scholarship
Up to \$17,000 (over 4 years)

For more information about the University of Guelph-Humber, please visit: guelphhumber.ca/futurestudents, email us at futurestudent@guelphhumber.ca or call 416.798.1331 x6056.



Ontario High School Requirements

uoguel.ph/on-hs-reqs

Program	Majors	Requirements	Estimated Cut-off Ranges*	Notes	
Bachelor of Applied Science 8 semesters (Honours Degree) page 13	<ul style="list-style-type: none"> Applied Human Nutrition 	<ul style="list-style-type: none"> English (ENG4U) 1 4U math course Biology (SBI4U) Chemistry (SCH4U) 2 additional 4U or 4M courses 	78–83%	4U Biology is recommended.	
	<ul style="list-style-type: none"> Child Studies Family Studies and Human Development 	<ul style="list-style-type: none"> English (ENG4U) 1 4U math course 1 of Biology (SBI4U), Chemistry (SCH4U), Introductory Kinesiology (PSK4U) 3 additional 4U or 4M courses 			
Bachelor of Arts 6 semesters (General Degree) 8 semesters (Honours Degree) page 15	<ul style="list-style-type: none"> Anthropology Classical Studies Creative Writing Criminal Justice and Public Policy Culture and Technology Studies English Environmental Governance Food, Agricultural and Resource Economics French Studies Geography History 	<ul style="list-style-type: none"> International Development Studies Justice and Legal Studies Music Philosophy Political Science Psychology Sexualities, Genders and Social Change Sociology Studio Art Theatre Studies 	<ul style="list-style-type: none"> English (ENG4U) 5 additional 4U or 4M courses 	75–80% for all majors except: Creative Writing (80–85%) Criminal Justice and Public Policy and Psychology (80–86%)	Completion of Advanced Functions (MHF4U) is highly recommended for Food, Agricultural and Resource Economics; this major requires knowledge in math. A 4U math is recommended for students pursuing other social science majors. Students not admitted to Criminal Justice and Public Policy will be automatically considered for Bachelor of Arts, Justice and Legal Studies. Students not admitted to Psychology will be automatically considered for Bachelor of Arts, Sociology.
	<ul style="list-style-type: none"> Economics Mathematical Economics 	<ul style="list-style-type: none"> English (ENG4U) Advanced Functions (MHF4U) 4 additional 4U or 4M courses 	75–80%		
Bachelor of Arts and Sciences 8 semesters (Honours Degree) page 21		<ul style="list-style-type: none"> English (ENG4U) Advanced Functions (MHF4U) 2 of Biology (SBI4U), Chemistry (SCH4U), Physics (SPH4U) 1 4U or 4M Arts or Social Studies course 1 additional 4U or 4M course 	78–83%	Arts and social studies courses include any 4U/M course that does not begin with S, M, I, P, or T. Core courses are complemented by two minors of your choice — one science, and one arts or social science. See page 8 for a list of minors.	
Bachelor of Bio-Resource Management 8 semesters (Honours Degree) page 23	<ul style="list-style-type: none"> Environmental Management 	<ul style="list-style-type: none"> English (ENG4U) Biology (SBI4U) 4 additional 4U or 4M courses 	75–80%	4U Chemistry and a 4U Math are strongly recommended. Applicants who lack 4U Chemistry will be required to take a replacement course in semester one.	
	<ul style="list-style-type: none"> Equine Management 	<ul style="list-style-type: none"> English (ENG4U) 1 4U math course Biology (SBI4U) Chemistry (SCH4U) 2 additional 4U or 4M courses 			
Bachelor of Commerce 8 semesters (Honours Degree) page 25	<ul style="list-style-type: none"> Accounting Food and Agricultural Business Management Management Economics and Finance 	<ul style="list-style-type: none"> Marketing Management Real Estate Sport and Event Management Undeclared (first-year only) 	<ul style="list-style-type: none"> English (ENG4U) Advanced Functions (MHF4U) 1 additional 4U math course 3 additional 4U or 4M courses 	80–86%	Students interested in co-op should apply directly to a major with co-op as Undeclared does not have a co-op option.
	<ul style="list-style-type: none"> Government, Economics and Management Hospitality and Tourism Management 	<ul style="list-style-type: none"> English (ENG4U) Advanced Functions (MHF4U) 4 additional 4U or 4M courses 			
Bachelor of Computing 6 semesters (General Degree) 8 semesters (Honours Degree) page 29	<ul style="list-style-type: none"> Computer Science Software Engineering 	<ul style="list-style-type: none"> English (ENG4U) Calculus and Vectors (MCV4U) 4 additional 4U or 4M courses 	87–91%	Computing and data management courses are recommended, as are other courses necessary to prepare you for study in an area of application.	
Bachelor of Creative Arts, Health and Wellness 8 semesters (Honours Degree) page 31	<ul style="list-style-type: none"> Music Studio Art Theatre Studies 	<ul style="list-style-type: none"> English (ENG4U) 5 additional 4U or 4M courses 	75–80%	Pending approval by the Ontario Universities Council on Quality Assurance.	

Program	Majors	Requirements	Estimated Cut-off Ranges**	Notes
Bachelor of Engineering 8 semesters (Honours Degree) page 33	<ul style="list-style-type: none"> Biological Engineering ■ Biomedical Engineering ■ Computer Engineering ■ Engineering Systems and Computing ■ Environmental Engineering ■ Mechanical Engineering ■ Water Resources Engineering ■ Undeclared (first-year only) 	<ul style="list-style-type: none"> English (ENG4U) Advanced Functions (MHF4U) Calculus and Vectors (MCV4U) Chemistry (SCH4U) Physics (SPH4U) 1 additional 4U or 4M course 	84–89%	Students interested in co-op should apply directly to a major with co-op as Undeclared does not have a co-op option.
Bachelor of Indigenous Environmental Science and Practice ■ 8 semesters (Honours Degree) page 37		<ul style="list-style-type: none"> English (ENG4U) Advanced Functions (MHF4U) Biology (SBI4U) Chemistry (SCH4U) 2 additional 4U or 4M courses 	75–80%	
Bachelor of Landscape Architecture 8 semesters (Honours Degree) page 39		<ul style="list-style-type: none"> English (ENG4U) 5 additional 4U or 4M courses 	Admission is determined through a combination of academic grades and the Background Information Form (BIF).	Applicants are required to submit the Background Information Form (BIF). Sciences, technical drawing and language courses are recommended.
Bachelor of Mathematics 6 semesters (General Degree) 8 semesters (Honours Degree) page 41	<ul style="list-style-type: none"> Mathematical Science 	<ul style="list-style-type: none"> English (ENG4U) Advanced Functions (MHF4U) Calculus and Vectors (MCV4U) 3 additional 4U or 4M courses 	78–84%	
Bachelor of One Health ■ 8 semesters (Honours degree) page 43		<ul style="list-style-type: none"> English (ENG4U) Advanced Functions (MHF4U) 2 of Biology (SBI4U), Chemistry (SCH4U), Physics (SPH4U) 1 4U or 4M Arts or Social Studies course 1 additional 4U or 4M course 	83–88%	Arts and social studies courses include any 4U/M course that does not begin with S, M, I, P, or T.
Bachelor of Science 6 semesters (General Degree) 8 semesters (Honours Degree) page 45	Biological Sciences <ul style="list-style-type: none"> Animal Biology Biochemistry ■ Biological Science Bio-Medical Science Biomedical Toxicology ■ Food Science ■ Human Kinetics Marine and Freshwater Biology ■ Microbiology ■ Molecular Biology and Genetics ■ Neuroscience ■ Nutritional and Nutraceutical Sciences ■ Wildlife Biology and Conservation ■ Zoology 	<ul style="list-style-type: none"> English (ENG4U) Advanced Functions (MHF4U) 2 of Biology (SBI4U), Chemistry (SCH4U), Physics (SPH4U) 2 additional 4U or 4M courses 	78–84% for all majors except: Animal Biology, Bio-Medical Science, and Neuroscience (85–91%) Biological Science (81–86%)	Two of three 4U science courses (i.e.: Biology, Chemistry, and Physics) are required for admission; completion of all three is recommended. Applicants who lack the third science course will take a replacement course in semester one. Students not admitted to Animal Biology or Bio-Medical Science will be automatically considered for Bachelor of Science, Biological Science.
	Physical Sciences <ul style="list-style-type: none"> Biological and Pharmaceutical Chemistry ■ Chemistry ■ Physics ■ Physical Science 	<ul style="list-style-type: none"> English (ENG4U) Calculus and Vectors (MCV4U) 2 of Biology (SBI4U), Chemistry (SCH4U), Physics (SPH4U) 2 additional 4U or 4M courses 	78–84% for all majors	
Bachelor of Science in Agriculture 8 semesters (Honours Degree) page 51	<ul style="list-style-type: none"> Animal Science ■ Crop Science ■ Honours Agriculture ■ Horticulture ■ 	<ul style="list-style-type: none"> English (ENG4U) Advanced Functions (MHF4U) 2 of Biology (SBI4U), Chemistry (SCH4U), Physics (SPH4U) 2 additional 4U or 4M courses 	75–80%	Completion of 4U Biology and 4U Chemistry is recommended. First year is common; students will select a major in second year.
Bachelor of Science in Environmental Sciences 8 semesters (Honours Degree) page 53	<ul style="list-style-type: none"> Ecology ■ Environment and Resource Management ■ Environmental Economics and Policy ■ Environmental Sciences ■ 	<ul style="list-style-type: none"> English (ENG4U) Advanced Functions (MHF4U) 2 of Biology (SBI4U), Chemistry (SCH4U), Physics (SPH4U) 2 additional 4U or 4M courses 	75–80%	Completion of 4U Biology and Chemistry is recommended. First year is common; students will select a major in second year.
Doctor of Veterinary Medicine 8 semesters page 55		No direct admission from high school. Applicants must have completed a minimum of two years of a full-time undergraduate degree program. Please see page 55 for more information.		
Associate Diplomas 4 semesters page 57	Associate Diplomas in: <ul style="list-style-type: none"> Agriculture (Ridgetown) ■ Environmental Technician (Ridgetown) ■ Equine Care and Management (Ridgetown) ■ Horticulture (Ridgetown) ■ Turfgrass Management ■ Veterinary Technology (Ridgetown) 	<ul style="list-style-type: none"> Secondary School Diploma (OSSD) Veterinary Technology: <ul style="list-style-type: none"> OSSD with credits in SBI3C or SBI3U; SCH3U or SCH4C; MTC4C or MAP4C, or any 4U Math; and ENG4C or any 4U English. 	65–70%	Consult the associate diploma program calendar uoguelph.ca/diploma_calendar for program details. Turfgrass applicants are required to complete a Background Information Form. See page 57 for more details. 'U' level course minimum final grade must be 65%; 'C' level course minimum final grade must be 75%.

Visit admission.uoguelph.ca/degrees for a list of programs offered in general vs honours format. For admission purposes, FEF4U and EAE4U will be considered equivalent to ENG4U.

■ Offered as regular and co-op programs. ■ Mandatory co-op programs.

** Estimated cut-off ranges are based on the admission averages from previous years and are provided solely as a point of reference. Exact cut-offs for the current cycle will be determined by the quantity and quality of applications received and the number of places available in the program. Co-op averages will often exceed the estimated cut-off ranges. Students not admissible to co-op will be automatically considered for the regular program.



National Course Equivalency Chart by Province and Territory

uoguel.ph/nat-eq

Ontario Course	Alberta, Northwest Territories, Nunavut	British Columbia, Yukon	Manitoba	New Brunswick	Newfoundland and Labrador	Nova Scotia	Prince Edward Island	Quebec (Grade 12)	Quebec (CEGEP)	Saskatchewan
General Requirements	High school diploma with 5 academic courses at the 30 or 31 level (5 credit), including required subjects. Two 3 credit courses can be used to equal one 5 credit course.	High school diploma with 5 academic courses from the accepted course list, including required subjects	High school diploma with 5 academic courses at the 40S level, including required subjects	High school diploma with 5 academic courses numbered 120, 121, or 122, including required subjects	High school diploma with 5 academic courses (2 credit) at the 3000 level, including required subjects	High school diploma with 5 academic courses at the Grade 12 level, including required subjects	High school diploma with 5 academic courses at the 611 or 621 level, including required subjects	High school diploma with 6 academic (university preparation) courses, including required subjects	One year of CEGEP with 12 academic courses, including required subjects Note: course codes are subject to change	High school diploma with 6 courses at the 30 level, including required subjects
English (ENG4U)	English 30–1	English Studies 12 or English First Peoples 12	English 40S	English 121 or 122	English 3201	English 12	English 621A	English 12	Two English courses (603 or 604)	English A30 and B30
Biology (SBI4U)	Biology 30	Anatomy and Physiology 12	Biology 40S	Biology 121 or 122	Biology 3201	Biology 12	Biology 621	Biology 12	Biology I (NYA). Completion of Biology II is recommended.	Biology 30
Chemistry (SCH4U)	Chemistry 30	Chemistry 12	Chemistry 40S	Chemistry 121 or 122	Chemistry 3202	Chemistry 12	Chemistry 621	Chemistry 12	Chemistry I and II (NYA and NYB)	Chemistry 30
Physics (SPH4U)	Physics 30	Physics 12	Physics 40S	Physics 121 or 122	Physics 3204	Physics 12	Physics 621	Physics 12	Mechanics (Physics NYA) AND one of Physics NYB or NYC	Physics 30
Calculus and Vectors (MCV4U)	Math 31	Calculus 12	Calculus 45S	Calculus 120	Math 3208	Calculus 12	Math 611B	Calculus 12	Calculus 1 (Math NYA)	Calculus 30
Advanced Functions (MHF4U)	Math 30–1	Pre-Calculus 12	Pre-Calculus 40S	Pre-Calculus B-120	Math 3200	Pre-Calculus 12	Math 621B	Advanced Functions 12	Linear Algebra (Math NYC)	Pre-Calculus 30
Other Math (MDM4U)	Math 30–2	Foundations of Math 12	Applied Math 40S	Foundations of Math 120	Math 3201	Math 12	N/A	Data Management 12	Calculus 2 (Math NYB)	Foundations of Math 30

Please refer to the Ontario Admission Requirements chart for specific subject requirements (pages 61 - 62).

E-mail national@uoguelph.ca with your questions about admission requirements and course equivalencies.





How to Apply

admission.uoguelph.ca/applynow

STEP 1: APPLY

Apply to the U of G

1. Apply at ouac.on.ca

- All applicants will apply using the undergraduate application available online at the Ontario Universities Application Centre (OUAC).
- Submit your application by **January 15, 2024** for early consideration.

Note: We will continue to consider applications received after this date.

2. Pay the application fee

The base application fee of \$156 provides you with three program choices. Each additional program choice is \$50. All fees are payable to the OUAC.

Note: If you remove one of your program choices and add a new one at the same university, there is no additional fee.

International applicants:

- If you only wish to apply to the University of Guelph, apply online directly using the form available at admission.uoguelph.ca/international.
- If you're applying to more than one university and are NOT a Canadian Citizen or Permanent Resident of Canada, apply with the Common App at apply.commonapp.org
- If you're a Canadian Citizen or Permanent Resident of Canada, apply online at ouac.on.ca

Transfer applicants:

- If you only wish to apply to the University of Guelph or the University of Guelph-Humber, apply using our contract application which has a reduced application fee. See admission.uoguelph.ca/transfer-college-or-university.
- Entry points vary by program. Visit our website for more information about admission requirements and application deadlines admission.uoguelph.ca/exttransfer.

STEP 2: SUBMIT

Submit Documents

1. Ontario High School applicants:

Your school will submit grades to the OUAC on your behalf. We receive grade data on an ongoing basis throughout the admission cycle and all grades must be submitted by **April 25, 2024**.

Note: If you are not currently enrolled, you must make arrangements to have your school submit official grades to the OUAC, or submit official transcripts to Admission Services on your behalf.

2. High School applicants outside of Ontario:

Please have your school forward official transcripts showing completed Grade 11 and 12 courses, and all in-progress Grade 12 courses. For currently enrolled course work, have your guidance counsellor/administrator email an official transcript with all in-progress and completed grades to applicant@uoguelph.ca. All course and grade information must be sent to Admission Services at the University of Guelph as soon as possible, but no later than **April 15, 2024**.

British Columbia:

British Columbia schools submit grade data electronically to the OUAC. We will automatically receive grade data from the OUAC on an ongoing basis.

3. International High School applicants outside of Canada:

Upload all required documents to your admission portal no later than **March 15, 2024**.

4. Transfer applicants:

High school and post-secondary transcripts must be sent from the issuing institution directly to Admission Services on your behalf. Unofficial transcripts can be submitted through the OUAC Document Upload.

Mature applicants and those not currently enrolled in school:

Submit your documents by **January 15, 2024** to be considered for early offers of admission. Submit your official grades by **April 15, 2024**.

Transfer applicants:

Document deadlines vary by entry point. Visit our website for more information: admission.uoguelph.ca/transfer-college-or-university

STEP 3: MONITOR

Monitor the status of your application

1. Ontario High School applicants:

You can monitor the status of your application on ouac.on.ca. Admission decisions will be communicated by e-mail and through your OUAC account.

2. High School applicants outside of Ontario:

You can monitor the status of your application on WebAdvisor and ouac.on.ca. Admission decisions will be communicated by e-mail and through your OUAC and WebAdvisor accounts.

3. International High School applicants outside of Canada:

You can monitor the status of your application through your admission portal. If you applied through the OUAC, you can also monitor the status of your application through your OUAC account. Admission decisions will be communicated by e-mail and through your admission portal.

4. Transfer applicants:

You can monitor the status of your application on WebAdvisor and ouac.on.ca. Admission decisions will be communicated by e-mail and through your OUAC and WebAdvisor accounts.

STEP 4: ACCEPT

Accept your offer to the U of G

Accept your offer of admission through ouac.on.ca by **June 3, 2024**.

International applicants:

Accept your offer through ouac.on.ca by **May 1, 2024**.

Transfer applicants:

Accept your offer of admission through ouac.on.ca by the deadline indicated in your offer.

For more information:

Ontario High School applicants:

admission.uoguelph.ca/ontario
admission@uoguelph.ca

High School applicants outside of Ontario:

admission.uoguelph.ca/outofprov
national@uoguelph.ca

International applicants studying outside of Canada:

uoguelph.ca/study-in-canada/
intapps@uoguelph.ca

Transfer applicants:

admission.uoguelph.ca/exttransfer
transferinfo@uoguelph.ca

Pathways and Articulation students:

admission.uoguelph.ca/articulation
pathways@uoguelph.ca

Mature applicants:

admission.uoguelph.ca/maturestudent
admission@uoguelph.ca

Academic Transition Program:

uoguelph.ca/arts/students/ATP
admission@uoguelph.ca

Home-schooled applicants:

admission.uoguelph.ca/canadian/homeschool
admission@uoguelph.ca

Stay connected:

In-person or online at:

admission.uoguelph.ca/connect-with-us



Supplementary Information Forms

STUDENT PROFILE FORM

Optional but strongly recommended

Deadline: March 1, 2024

Available at admission.uoguelph.ca/spf

The Student Profile Form (SPF) is your opportunity to tell Admission Services about activities in which you have been involved that have helped you develop leadership and citizenship qualities. Factors beyond your control that have negatively affected your academic performance, such as illness or extenuating circumstances, will also be considered. If your admission average in May does not meet the cut-off for the program to which you have applied, your SPF will be considered if your average falls within a discretionary range of the final cutoff (up to 5%). If you choose to submit the SPF it is due March 1. The online form is made available in November.

Note: The SPF is to be used by high school applicants only. Transfer students who have factors to report should email a support letter to Admission Services: applicant@uoguelph.ca

SUPPLEMENTARY INFORMATION FORM FOR STUDENTS WITH DISABILITIES

Deadline: March 1, 2024

Available at wellness.uoguelph.ca/accessibility

The University of Guelph strives to provide equal opportunity for academically qualified students with disabilities. If you believe that your admission average does not reflect your true academic ability as a result of a disability, you are encouraged to complete the Supplementary Information Form for Students with Disabilities (SIF-D). The online form is made available in November. SIF-D submissions are reviewed and considered along with your marks in determining admission.

DIPLOMA IN TURFGRASS MANAGEMENT

Mandatory Background Information Form (BIF)

Recommended Deadline: February 16, 2024

Available at admission.uoguelph.ca/supforms

Your admission average will be calculated using Grade 12 or equivalent (4U, 4M or 4C courses only) and the Background Information Form (BIF). Applications and

documents received after **February 16, 2024** will be considered as space allows.

BACHELOR OF LANDSCAPE ARCHITECTURE

Mandatory Background Information Form (BIF)

Deadline: March 1, 2024

Available at admission.uoguelph.ca/supforms

If you apply to the BLA program, you are required to submit a Background Information Form (BIF). Admission is determined through a combination of academic grades and the BIF.

Additional Admission Information

INTERNATIONAL BACCALAUREATE (IB)

If you are applying with an IB Diploma you should:

- present a minimum academic score of 28 (many programs may require a higher score);
- complete the diploma with six subjects; 3 higher level and 3 standard level;
- include specific subject requirements among your higher and standard levels for the program to which you're applying (Math Studies and Standard Level Applications and Interpretations are not acceptable prerequisites for programs that require Advanced Functions or Calculus);
- ensure your predicted scores are submitted using the 7-point scale (Ontario students registered in an IB program will typically have their IB scores converted into Ontario U and M level courses).

Note: IB Scores will be converted into grades on a percentage scale out of 100 by your school. Admission and scholarships are determined using the conversions.

IB students registered in their grade 11 year of study are advised to consult their high school IB guidance counsellor regarding 2019 changes to the IB Mathematics curriculum and how the new curriculum will be converted to Ontario 3U/M and 3U/M courses.

Upon receipt of official final results from the IBO, we'll assign specific transfer credits, where applicable, to

a maximum of 2.00 credits, for grades of 5 or better on higher level courses where the applicant has been awarded the IB Diploma or DP course. You may request a change to an unspecified credit within the first 30 days of your first semester.

ADVANCED PLACEMENT (AP)

- If you have completed AP examinations with a minimum grade of 4, you will be eligible to receive transfer credits, where applicable, to a maximum of 2.0 credits.
- Transfer credits will be assigned once official exam results have been received from the AP College Board.
- Institution code for the University of Guelph is 0892.

For additional information, please visit admission.uoguelph.ca/addinformation.



English Proficiency

admission.uoguelph.ca/englprof

You will be required to provide evidence of English language proficiency if:

- your primary or first language is not English, and
- you have completed less than four years of full-time secondary or post-secondary school study demonstrating satisfactory academic progress in an English language school system.

Deadlines

If you are required to provide proof of English language proficiency, your test results must be received by the deadline (listed below). Test results dated more than two years prior to application for admission will not be considered. Send English proficiency results to Admission Services (see address on back cover).

The deadlines for presenting evidence of English language proficiency are:

February 1, 2024: the deadline for early consideration (out-of-country applicants)

March 1, 2024: the deadline for final consideration (out-of-country applicants)

April 15, 2024: the deadline for applicants studying in Canada

Acceptable Tests and Required Scores:

Test	Required Scores
Advanced Level of the English Language Certificate Program (ELCP) <i>eslguelph.ca</i>	Successful completion of the University of Guelph's Open Learning Advanced Level of the English Language Certificate Program (ELCP) (levels 9 and 10) is also considered an acceptable form of testing for English proficiency.
Cambridge English: C1 Advanced and C2 Proficiency <i>cambridgeenglish.org</i>	Minimum overall score of 176 with no band less than 169.
Canadian Academic English (CAEL) <i>cael.ca</i>	Language Assessment Minimum overall band score of 70.
Duolingo English Test <i>englishtest.duolingo.com</i>	Minimum overall score of 110. Individual subscores may be considered.
International English Language Testing System (IELTS) <i>ielts.org</i>	Minimum overall score of 6.5 with no band less than 6.
Pearson Test of English (PTE) <i>pearsonpte.com</i>	Minimum overall score of 60 with no score less than 60 in the individual components.
Test of English as a Foreign Language (TOEFL) <i>toefl.org</i>	Internet-based: minimum total score of 89 with no individual scaled score less than 21. Computer-based: minimum score of 250. Paper-based: minimum score of 600. Test of Written English (TWE): with a score of 5. Institution code is 0892.

Integrated Admission Pathway

opened.uoguelph.ca/English-Language-Programs

Not sure you'll meet the U of G's English proficiency requirement? Begin your University of Guelph degree while improving your English in the Integrated Admission Pathway (IAP). The IAP allows you to start taking university degree-credit courses immediately. The combination of English language courses and selected degree-credit courses provides a simultaneous learning experience within a supported environment. Take advantage of a unique opportunity to apply your new English language skills to your academic studies right away.

This pathway provides a flexible option for guaranteed admission to the following degree programs at the University of Guelph:

- Bachelor of Arts, all regular and co-op programs
- Bachelor of Science, all regular and co-op programs
- Bachelor of Commerce, Undeclared
- Bachelor of Science in Agriculture
- Bachelor of Bio-Resource Management, all regular and co-op programs
- Bachelor of Science in Environmental Sciences, all regular and co-op programs

Apply through the Ontario Universities' Application Centre (OUAC) or Open Learning and Educational Support.



FAQs

[uoguel.ph/faqs](https://uoguelph.ph/faqs)

What if I want to apply to more than one program at the U of G?

If you are coming to the University of Guelph directly from high school, you will be considered for all programs to which you apply. You are encouraged to list your program choices at U of G in order of preference.

What if I'm not admissible to the program to which I apply?

There are a few programs where we will consider you automatically for an alternate program.

1. Not admitted to a co-op program? You'll be automatically considered for admission to the regular program.
2. If you don't possess the admission average for BA, Criminal Justice and Public Policy, we'll automatically consider you for BA, Justice and Legal Studies.
3. If you don't possess the admission average for BA, Honours Psychology, we'll automatically consider you for BA, Honours Sociology.
4. If you don't possess the admission average for B.Sc., Animal Biology or Bio-Medical Science, we'll automatically consider you for B.Sc., Biological Science.

Does the U of G rank me differently if I apply to other Ontario universities?

We do not consider the ranking of program choices at other Ontario universities for admission, residence or scholarship consideration.

What if I repeat high school courses?

We will use the highest grade reported for any repeated course.

What if I want to change the program I applied to?

You can amend your OUAC application but make sure you do it by **April 15, 2024** to be considered equally for admission to all programs.

When is the deadline to apply?

To be considered for early admission, you should submit your application by **January 15, 2024**.

Note: We will continue to consider applications received after this date.

What if I want to apply to co-op?

The minimum admission average required to be considered for co-op programs is normally 80%. It is important to note, however, that many co-op cut-offs exceed the estimated ranges based on the quantity and quality of applications and the number of places available in the program.

If you are considering applying to the Undeclared option in Bachelor of Commerce or Bachelor of Engineering but know you want to pursue co-op, you are encouraged to apply to a major with co-op directly from high school. It's possible for all students to apply to co-op in first year but space can be limited.

What are the cut-offs?

Estimated cut-off ranges are based on the admission averages from previous years and are provided solely as a point of reference. Exact cut-offs for the current cycle are determined by the quantity and quality of applications received and the number of places available in each program. Admission to the University of Guelph can be competitive. Possession of an admission average within the estimated cut-off range (see the admission chart on pages 61 and 62) does not guarantee an offer of admission.



Our Admission Plan

admission.uoguelph.ca

Offers of Admission

If you are currently enrolled full-time in an Ontario high school and you meet the minimum requirements, you will be considered for admission on an ongoing basis beginning January 2024.

If you are not currently enrolled full-time in an Ontario high school, and you meet the minimum requirements, you will be considered for admission on an ongoing basis as soon as all required documentation is received. All documents must be received no later than **April 15, 2024**.

Note: this admission plan is applicable for students applying directly from high school.

Conditions of Your Offer

Any offer of admission that you receive from the University of Guelph is conditional upon the following:

- completion of the Ontario Secondary School Diploma (OSSD) or equivalent; and
- completion of six Grade 12 and/or 4U/M courses, including required subjects, or equivalent; and
- a minimum final average as outlined in your offer of admission.

Note: all admission conditions must be fulfilled by **August 9, 2024**.

Timing of Offers

Offer Dates	How We Calculate Your Admission Average	Estimated Cut-offs
Late January to late February	We use your top six completed 4U/M (or equivalent) courses, including required subjects.** Where not available, we use a combination of the top six completed or in-progress 4U/M and completed 3U/M courses, including required subjects. Should no 4U/M courses be completed or in-progress, the top five 3U/M completed courses (including required subjects) will be used.	Offers in this round are typically made to applicants whose admission average exceeds the estimated cut-off range.*
Early March to mid-April	We use your top six completed 4U/M (or equivalent) courses, including required subjects.** Where not available, we use a combination of the top six completed or in-progress 4U/M and completed 3U/M courses, including required subjects.	Offers in this round are typically made to applicants whose admission average is near the top of the estimated cut-off range.*
Late April to mid-May	We use your top six completed 4U/M (or equivalent) courses, including required subjects.** Where not available, we use a combination of the top six completed or in-progress 4U/M and completed 3U/M courses, including required subjects.	Offers in this round are typically made to applicants whose admission average is within the estimated cut-off range.*

Important Note: Some offers may be extended in December to a limited number of programs. In most cases, early offers will be sent to applicants whose admission average far exceeds the estimated cut-offs. Offers to the Bachelor of Landscape Architecture program will be made from late April to mid-May.

* For estimated cut-off ranges, see the Ontario requirements chart on pages 61 and 62.

** For a list of required subjects, see the Ontario high school requirements on pages 61 and 62, or provincial equivalents on page 63.

Applicants presenting an admission average of 75% and higher will be considered for admission to all programs to which they've applied. Possession of an admission average within the estimated cut-off range does not guarantee an offer of admission.





Important Deadlines for Fall 2024

admission.uoguelph.ca

JANUARY

15

- Application deadline for currently enrolled high school students to be considered for early admission.
Note: We will continue to accept applications received after this date.

25

Application deadline for:

- President's Scholarships
- Lincoln Alexander Chancellor's Scholarships
- Dr. Franco J. Vaccarino President's Scholarship

FEBRUARY

1

- Deadline for high school students studying outside of Canada to submit documents to be considered for early admission.

16

- Diploma in Turfgrass Management Background Information Form (BIF) submission deadline.

MARCH

1

Deadline for:

- Undergraduate applications to the Ontario Universities' Application Centre (OUAC).
Note: We will continue to consider applications received after this date.
- Applications for students studying outside of Canada.
- Bachelor of Landscape Architecture (BLA) Background Information Form (BIF) submission for all currently enrolled high school students and transfer applicants.
- Student Profile Form (SPF) submission for all currently enrolled high school students.
- Supplemental Information Form for Students with Disabilities (SIF-D) submission.
- Proof of English proficiency for out-of-country applicants.

15

- Deadline for high school students studying outside of Canada to submit required documents.

APRIL

15

Deadline for:

- Official transcripts for all high school applicants not currently enrolled in high school.
- Official transcripts for high school students studying outside of Ontario.
- Proof of English proficiency for applicants currently studying in a Canadian high school.
- Amending your application to be considered equally for all programs, except for BLA.
- Applying for scholarships and bursaries that require an application.
- Entrance Financial Need Assessment Form to determine your eligibility for financial need-based entrance awards.
- Proof of English proficiency for out-of-country applicants.

25

- Deadline for Ontario high schools to submit all official grades to the OUAC.

MAY

1

Deadline for:

- International students studying outside of Canada to accept their offer of admission.
- Transfer applicants to apply for fall 2024 admission.

15

- Deadline for all international fee-paying students to submit the \$1000 tuition deposit.

JUNE

3

- **Deadline to accept offer of admission through the OUAC!**
- Deadline for residence application and \$750 deposit.
- Document submission deadline for transfer applicants for fall 2024 entry.

AUGUST

9

- Deadline to fulfill admission conditions.

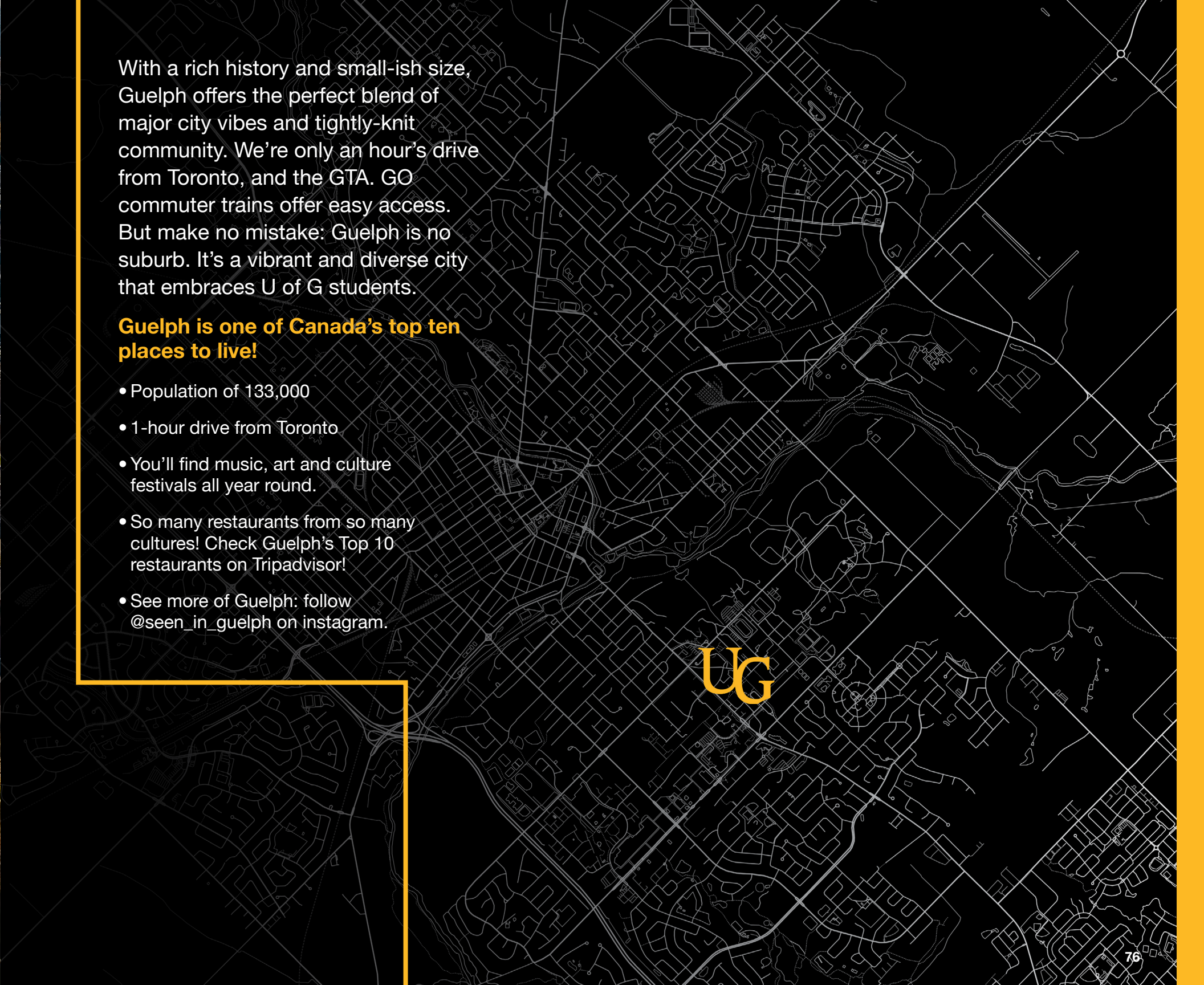
I WANT THE ULTIMATE UNIVERSITY EXPERIENCE



City of Guelph

guelph.ca

THE ULTIMATE UNIVERSITY TOWN



With a rich history and small-ish size, Guelph offers the perfect blend of major city vibes and tightly-knit community. We're only an hour's drive from Toronto, and the GTA. GO commuter trains offer easy access. But make no mistake: Guelph is no suburb. It's a vibrant and diverse city that embraces U of G students.

Guelph is one of Canada's top ten places to live!

- Population of 133,000
- 1-hour drive from Toronto
- You'll find music, art and culture festivals all year round.
- So many restaurants from so many cultures! Check Guelph's Top 10 restaurants on Tripadvisor!
- See more of Guelph: follow @seen_in_guelph on instagram.

UG



Athletics and Recreation

gryphons.ca

9000+

INTRAMURAL PARTICIPANTS IN 20 DIFFERENT SPORTS

35+

CLASSES SUCH AS TRX, YOGA, PILATES, CYCLE, ZUMBA, AQUAFIT AND MORE!

22,000

SQ.FT. FITNESS CENTRE

FREE

ENTRY TO VARSITY GAMES FOR U OF G STUDENTS

Varsity Sports & Clubs

gryphons.ca

● = Men ● = Women ● = Clubs

Artistic Swimming	●
Badminton	● ● ●
Baseball	●
Basketball	● ●
Cheerleading	●
Climbing	●
Cross-Country	● ●
Curling	● ●
Dance Pak	●
Dragon Boat	●
Equestrian	●
Field Hockey	● ●
Figure Skating	● ●
Football	●
Golf	● ●
Hockey	● ●
Lacrosse	● ●
Nerf	●
Nordic Skiing	● ●
Quadball	●
Ringette	●
Rowing	● ●
Rugby	● ●
Soccer	● ●
Softball	●
Swimming	● ●
Squash	● ●
Tap Pack	●
Tennis	●
Track and Field	● ●
Ultimate Frisbee	●
Underwater Hockey	●
Urban Hip Hop	●
Volleyball	● ●
Water Polo	●
Women's Football	●
Wrestling	● ●

Facilities

gryphons.ca

Indoor

- Twin pad arena
- 2 pools
- Suspended running track
- 3 gyms
- 5 squash courts
- 1 climbing wall
- 9 dance / multi-purpose studios
- Fitness centre
- 2 wrestling / combative rooms
- Hot tub / whirlpool
- Indoor fieldhouse with 4-lane running track

Outdoor

- Stadium
- 8-lane IAAF track
- 2 grass fields
- Mini-specialized training field
- 3 ball diamonds
- 4 beach volleyball courts
- Jogging trails
- 3 multi-purpose lit artificial fields

Intramurals

gryphons.ca

- 15+ Intramural Sports
- Competitive, Recreational, Fun and first-year leagues available

Clubs and Organizations

gryphlife.uoguelph.ca



Clubs and organizations span cultural and religious interests, media and performing arts, sports, academics and community service.

Join a student government - represent your residence hall, your academic college or the entire university!

With more than 200 clubs, we can't fit them all on one page, but here's a sample:

- Canadian Asian Student Society
- Contemporary Music Ensemble
- Engineers Without Borders
- Future Vets Club
- Guelph Black Students Association
- Guelph Queer Equality
- Habitat for Humanity
- Indian Students Association
- Muslim Students Association
- University Catholic Community
- World University Service of Canada

GET INVOLVED



Living your best life

uoguelph.ca/studentexperience

WE'RE GOING TO MAKE YOUR GRYPHON LIFE YOUR BEST LIFE.

Even before you arrive, we've got your back! START U of G is your guide to coming to U of G. Connect with other students, and get all the info you need for September!

START U of G

startuofg.ca

START U of G is your guide to starting university. Connect with other students and get all the info you need for September!

START Indigenous

uoguel.ph/start

This orientation program for First Nations, Inuit and Métis students helps you and your family members learn more about life at U of G and the academic, financial, social and cultural supports available. Meet the Indigenous Student Advisor and the many other Guelph community members who will be at your side throughout your journey.

START Accessible

wellness.uoguelph.ca/accessibility

This two-and-a-half-day orientation introduces participants to Student Accessibility Services and other campus resources, preparing you for life as a U of G student while experiencing a disability.

START International

uoguel.ph/start

This orientation program for international students, exchange students and out-of-country Canadians helps you make connections and settle into your new home before Orientation Week begins. It features info sessions about academic life, resources to help you succeed, space to meet and connect with upper year students and staff, and campus tours and social gatherings.



“The University of Guelph is committed to increasing the representation and success of Indigenous students, and promoting First Nations, Inuit and Métis cultures and heritage within the campus community. All Indigenous students are encouraged to visit the Indigenous Student Centre to learn about the programs and services.”

Natasha Young, MA, MSW, RSW
Manager, Indigenous Student Centre



HEALTHY MIND AND BODY

Wellness and Support

wellness.uoguelph.ca

Student Wellness is dedicated to providing health and well-being supports, events, and services to current University of Guelph students, for *free, all year long!

- Counselling
- Student Health Services
- Health & Performance Centre (HPC)
- Sexual and Gender-Based Violence Support & Education
- Student Accessibility Services (SAS)
- Student Support Network (SSN)
- Wellness Education & Promotion Centre

*Does not include services provided by the Health & Performance Centre

Students with Disabilities

wellness.uoguelph.ca/accessibility

Student Accessibility Services helps with equitable access to the academic environment. We support all types of disabilities - permanent and temporary, evident and non-evident, episodic or relatively unchanging. Whether your disability is new or has been with you your whole life, please contact us as soon as you've been admitted.

Student Experience

uoguelph.ca/studentexperience

Student Experience supports the transition to campus and orientation needs of all students, including students identifying as First Nations, Inuit, Métis, Black, racialized, members of the LGBTQ2IA+ community, and students from cultural, international, religious, and spiritual communities. We provide programs where you can build community, explore lived experiences, and support your personal development.

Faith and Spirituality

The Multi-Faith Resource Team represents a number of faiths and works together to meet the religious and spiritual needs of the University community.

Black and Racialized Students

Cultural Diversity Services in the department of Student Experience supports the development of Black and racialized students. We provide services such as wellness support, cultural and transition support, student advising, and identity-based programming and resources.

LGBTQ2IA+ Students

The Sexual and Gender Diversity Advisor provides resources, programs and advising support for LGBTQ2IA+ students. OUTline is a peer-to-peer resource and support service specializing in community building and information relating to sexual orientation and gender identity.

First Nations, Inuit and Métis Students

The Indigenous Student Centre provides a culturally supportive environment that fosters academic excellence and supports the intellectual, spiritual, emotional and physical development of all self-identified First Nations, Inuit and Métis students. We provide student advising and wellness support, cultural and educational programming as well as academic and financial information.



Residence

housing.uoguelph.ca

WHERE CAMPUS COMES TO LIFE.

When you live in residence at U of G, you're part of a community. You can also personalize your living options with Academic Clusters, Living-Learning Communities and Themed Living Communities based on your interests.

Follow [@UofGHousing](https://www.instagram.com/UofGHousing) on Instagram for updates and visit housing.uoguelph.ca/tours to explore our residences.

Priority Consideration

As a high school applicant, you will have priority for a space in residence (based on availability) if you submit your residence application and pay your \$750 deposit by **June 3, 2024**.

More information about eligibility for on-campus housing can be found at housing.uoguelph.ca.

In 2023, we were happy to provide residence for all new first-year students who submitted their application and deposit by the deadline!



SINGLE ROOM



DOUBLE ROOM



TOWNHOUSE

South Residences

- Mountain, Prairie and Maritime Halls house 1,800 students.
- More single rooms here than any other residence.
- Co-ed
- Dining hall in Prairie

North Residences

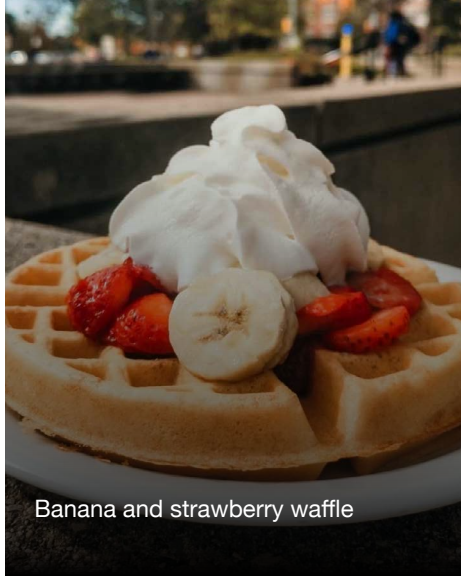
- Lambton offers suites with washrooms and kitchenettes.
- Lennox Addington has its own Starbucks.
- Johnston Hall is the most iconic building on campus.
- Arts House is where creative energy thrives.
- Mills Hall includes a fireplace lounge.
- Watson Hall is women only.

East Residences

- Dundas, Lanark and Glengarry are shared suite-style.
- East Village is made up of townhouses, each with four private bedrooms, shared washroom, kitchen, living and dining rooms.



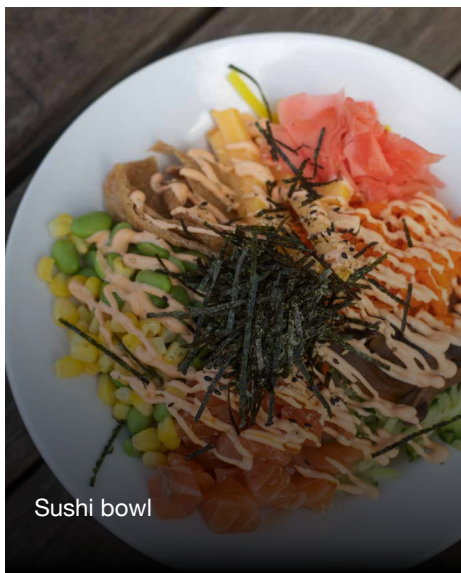
Sustainable Smash Burger



Banana and strawberry waffle



Bibimbap



Sushi bowl



Chicken Shawarma on fries



Jackfruit Burger in our #IamReusable container

Dining on Campus

hospitality.uoguelph.ca



MOUTH-WATERING FOOD THAT'S INSTA-WORTHY!

For years, we've been voted as having the best campus food of any Canadian university. Our secret? We make it all ourselves. We have a strong commitment to serving food that's good for you and the planet too.

Hospitality

hospitality.uoguelph.ca

Check out the hospitality website to learn more and follow @hospitalityUofG on Instagram, Twitter and Facebook for updates, menus and daily delicious posts!

Your Campus Card

campuscard.uoguelph.ca

Your Campus Card (ID card) is your meal card. Just tap it like a debit card.

Meal Plan Sizes

hospitality.uoguelph.ca/student-plans/student-meal-plans

- **Minimum:** not on-campus most weekends or lighter appetites.
- **Light:** occasionally on-campus on weekends or lighter appetites.
- **Full:** on-campus alternate weekends or average appetites. Our most popular plan!
- **Plus:** on-campus alternate weekends or larger appetites.
- **Varsity:** on-campus most weekends, athletes, or larger appetites.



Financial Support

uoguelph.ca/studentfin

WE CAN HELP.

We believe all qualified individuals should be able to attend university regardless of their financial status. We make it easier for you by working in partnership with government aid programs and students to offer innovative programs specifically geared to ensuring an accessible, top-quality education for all students.

\$27.1M

The amount 7,637 students received in awards, including \$10.2 million in need-based awards, in 2022-2023!



Top Scholarships

\$42,500

11 scholarships worth \$42,500 each, \$8,250 annually for four years, plus \$9,500 for a summer research assistantship position after first year. Apply by January 25, 2024 at: admission.uoguelph.ca/topscholarships

PRESIDENT'S SCHOLARSHIPS

Nine scholarships recognize students with a minimum 90% admission average who have made significant leadership contributions to their schools and communities.

LINCOLN ALEXANDER CHANCELLOR'S SCHOLARSHIPS

Each year, two scholarships recognize students entering with a minimum 90% admission average who have made significant leadership contributions to their schools and communities. Students must be one or more of the following: an Indigenous person, a person with a disability, and/or a Black or racialized student.

BOARD OF GOVERNORS' SCHOLARSHIPS

\$20,000

25 awards of \$20,000 payable over four years, recognizing students with outstanding academic excellence. Application not required.

ENTRANCE SCHOLARSHIPS

U of G rewards high academic achievement with a guaranteed entrance scholarship. Application not required.

Bursaries

ACCESSIBILITY BURSARIES

\$14,000

200 awards of \$14,000 payable over four years to those who have demonstrated financial need. Apply by April 15, 2024 at: uoguelph.ca/studentfin

REGISTRAR'S ENTRANCE BURSARIES

\$4,000

550 awards of \$4,000 for first year of study to those students who have demonstrated financial need. Apply by April 15, 2024 at: uoguelph.ca/studentfin

International Student Scholarships

DR. FRANCO J. VACCARINO PRESIDENT'S SCHOLARSHIP

\$42,500

Payable over four years, this is awarded to a top international student who is entering with a record of academic excellence and has made significant leadership contributions to their school and community. Apply by January 25, 2024 at: uoguelph.ca/registrar/sfs/vaccarino

INTERNATIONAL ENTRANCE SCHOLARSHIPS

\$17,500 - \$20,500

Awarded on a competitive basis to semester-one students who have an admission average of 85% (or equivalent) or higher.

They range in value from \$5,500 to \$8,500 in the first year and are renewable at \$4,000 per year in years two, three and four when registered in full-time studies with a minimum 80% average in the previous academic year.

Students must have a complete admission file by March 1, 2024 to be considered. Scholarship application not required.

Additional Information

If you are eligible for scholarships and/or bursaries, you will know the amount of your award(s) before the deadline to accept your offer.

U of G is committed to providing financial support in the form of scholarships and bursaries to encourage attendance by students who are Black, Indigenous or People of Colour. Read more at uoguelph.ca/registrar/sfs/bipoc.



SCHOLARSHIP SEARCH TOOL

Use our Scholarship Search Tool to find the scholarship that's right for you!
uoguelph.ca/registrar/sfs/ugawards



Student Financial Services

uoguelph.ca/studentfin

A WIDE RANGE OF SERVICES AND RESOURCES.

Work Study Program

This program creates part-time, on-campus employment for registered students with financial need. You can apply to this program by visiting the Student Financial Services website at uoguelph.ca/studentfin.

Part-time Jobs

Apply to one of our more than 4,000 part-time, on-campus jobs. Serve up a latté in one of our many on-campus eateries, help with research, work in an academic department or be a lifeguard at the pool.

Summer Research Positions

Full-time summer research opportunities are available through three competitive and unique programs: Undergraduate Research Assistantships (URAs) for students with demonstrated financial need; Indigenous Undergraduate Research Assistantships (IURAs) for Indigenous students; and Undergraduate Student Research Awards (USRAs) for students in natural sciences or engineering. Gain experience, work with faculty and earn at least \$9,640.

In-Course Bursaries

Sometimes it's hard to meet all of your financial obligations. If you have a financial shortfall, a medical expense that isn't covered by any insurance plan or government program, or if you are experiencing financial pressures or an emergency, a University of Guelph in-course bursary may be the answer. We'd be happy to meet with you to find a way to help.

Ontario Student Assistance Program (OSAP) and Other Government Student Assistance Programs

osap.gov.on.ca

We'll help you with questions about the program or your application. OSAP applications are available on the OSAP website: osap.gov.on.ca. Students from other Canadian provinces or territories apply directly to the student financial aid program offered by your home province to receive government assistance. Visit your province's/territory's government website for detailed information.

450+

WORK STUDY POSITIONS

150+

UNDERGRADUATE RESEARCH ASSISTANTSHIP POSITIONS

4,000+

PART-TIME JOBS

250+

PEER HELPER POSITIONS

150+

POSITIONS IN RESIDENCE LIFE

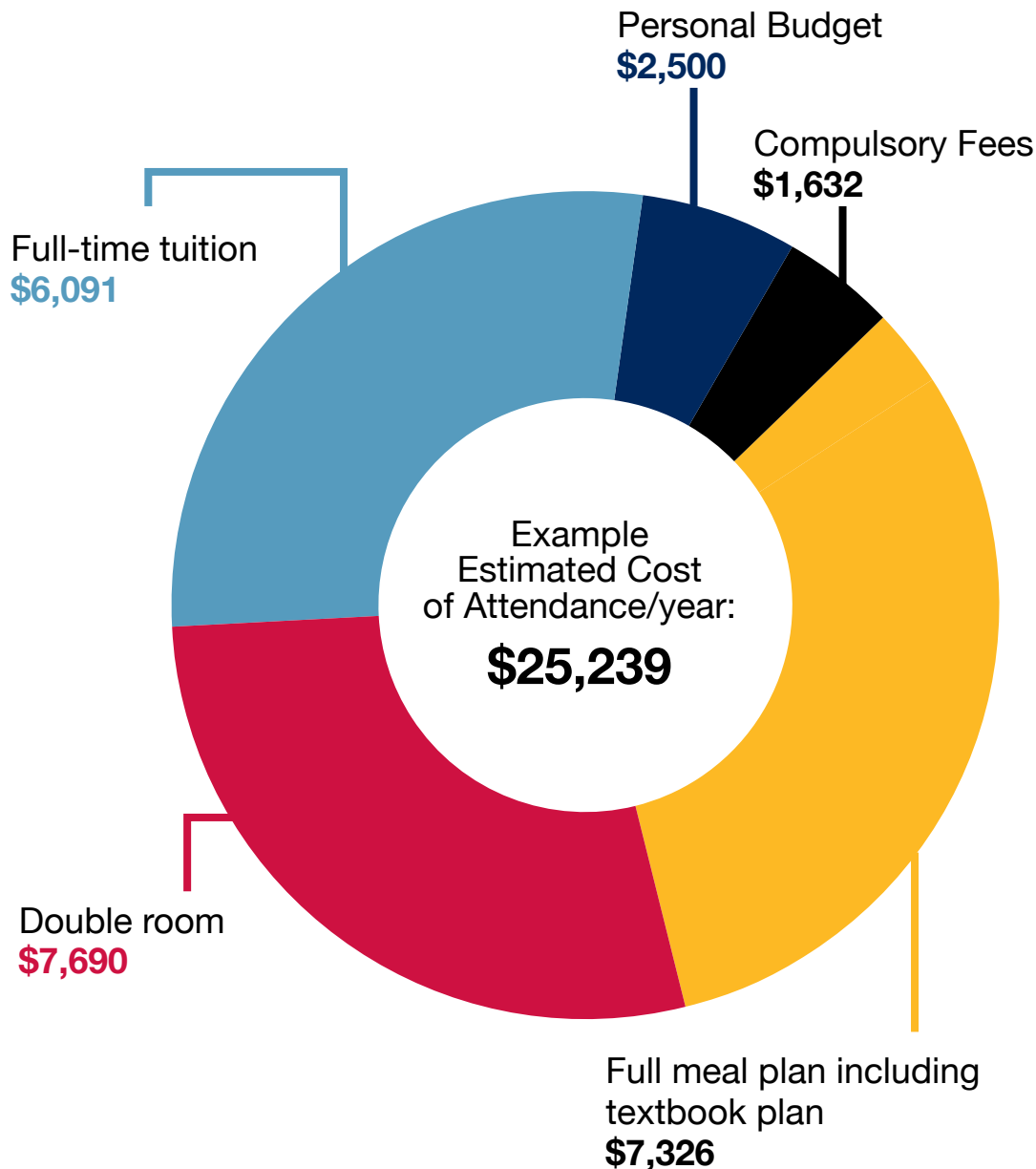
How much will it cost?

uoguelph.ca/studentfin



FEES PER YEAR:

Fee Type	Cost (two semesters)	Notes
Tuition for Ontario residents	\$6,091–\$11,286	Dependent on program.
Tuition for non-Ontario residents (within Canada)	\$6,715–\$12,443	Dependent on program.
Tuition for international students	\$29,720–\$49,110	Dependent on program.
Co-op fee	\$660	Paid in addition to tuition.
Compulsory fees	\$1,632–\$1,784	Incl. health/dental plans*, academic support, athletics, health services and city transit pass.
Residence fees (2 semesters) Residence room types vary: singles, doubles, triples, quads, townhouses and suites.	\$6,846–\$9,992	Includes ResNet internet service and laundry facilities. An additional Residence Activity Fee of approximately \$25 per semester (subject to change). Payment of fees is made on a semesterly basis. For more detailed information, visit housing.uoguelph.ca .
Meal Plan fees (2 semesters) Meal plan types vary: Minimum, Light, Full, Plus, Varsity	\$4,980–\$7,208	You receive half in September and the other half mid-December. For more detailed information, visit hospitality.uoguelph.ca .



Note: These estimates are based on 2023/2024 figures and are subject to change. Costs vary from program to program and depend on your lifestyle. Fees are listed on a per year basis.

*Students can opt out of dental plan with proof of equivalent coverage. International students are required to pay an additional fee of \$756 for the University Health Insurance Plan (UHIP).

Note: you pay for fees by semester, not all up front in September.



**ONCE A
GRYPHON,**

#FOREVERAGRYPHON

The U of G experience is about discovering who you're truly meant to be. And one thing's for sure: when you graduate, you'll always be part of the Gryphon family.

Graduate Programs

uoguelph.ca/gradprograms



Programs

Don't think sequels can be as good as the original? You haven't met our Grad Programs.

Sometimes, finding yourself at the U of Guelph means finding you want to stay. We pride ourselves on our exceptional undergrad experience — but we also know that for some students, it's just the beginning.

With one of the most comprehensive lists of graduate programs in Canada, U of G offers plenty of options for Gryphons to continue their studies.

At U of G, you can earn your graduate degree in the following areas:

- Accounting, GDip
- Animal Biosciences, MSc, PhD
- Artificial Intelligence*, MAsc, MSc
- Bioinformatics, MBInf, MSc, PhD
- Biomedical Sciences, DVSc, MBS, MSc, PhD
- Biophysics, MSc, PhD
- Biotechnology, MBIOT
- Business Administration, MBA
- Capacity Development and Extension, MSc
- Chemistry, MSc (thesis-based), PhD
- Clinical Studies, DVSc, MSc (thesis-based)
- Computational Sciences, PhD
- Computer Science, MSc, PhD
- Conservation Leadership, MCL
- Creative Writing, MFA
- Criminology and Criminal Justice Policy, MA
- Critical Studies in Improvisation, PhD
- Cybersecurity and Threat Intelligence, MCTI
- Dairy Technology Management, MDTM
- Data Science, MDS
- Doctor of Veterinary Medicine/Master of Public Health combined degree program, DVM/MPH
- Economics, MA, PhD
- Engineering, MASc, MEng, PhD
- English, MA
- Environmental Sciences, MES, MSc, PhD
- European Studies, MA
- Family Relations and Applied Nutrition, MAN, MSc, PhD
- Food Safety and Quality Assurance, GDip, MSc
- Food Science, MSc, PhD
- Food, Agricultural and Resource Economics, MFARE, MSc, PhD

- French Studies, MA
- Geography, MA, MSc, PhD
- History, MA, PhD
- Human Health and Nutritional Sciences, MSc, PhD
- Integrative Biology, MSc, PhD
- International Development Studies*, MA, MSc, PhD, MFARE, MASc
- Landscape Architecture, MLA
- Leadership, MA
- Literary Studies/Theatre Studies in English, PhD
- Management, MSc, PhD
- Market Research, GDip
- Marketing and Consumer Studies, MSc
- Mathematics & Statistics, MSc, PhD
- Molecular and Cellular Biology, MSc, PhD
- Neuroscience*, MBS, MSc, PhD
- One Health*, MA, MASc, MBS, MEng, MES, MSc, MSc (Planning), PhD
- Pathobiology, DVSc, GDip, MSc, PhD
- Philosophy, MA, PhD
- Physics, MSc, PhD
- Plant Agriculture, MSc, PhD
- Political Science, MA, PhD
- Population Medicine, DVSc, MSc, PhD
- Project Management, MPM, GDip
- Psychology, MA, MSc (Neuroscience & Applied Cognitive Science only), PhD
- Public Health, GDip, MPH
- Public Issues Anthropology, MA
- Regenerative Medicine*, DVSc, MASc, MBS, MSc, PhD
- Rural Planning and Development, MPlan, MSc (Planning)
- Rural Studies, PhD
- Sexualities, Genders and Bodies*, MA, MSc, PhD
- Social Practice and Transformational Change, PhD
- Sociology, MA, PhD
- Studio Art, MFA
- Theatre Studies, MA
- Tourism and Hospitality, MSc
- Tourism Research, GDip
- Toxicology*, MSc, MBS, PhD
- Veterinary Medicine / Public Health, DVM, MPH
- Veterinary Science, DVSc
- Wildlife Biology, MWB

*collaborative specializations

Career Education

uoguelph.ca/ELHub

The Experiential Learning Hub supports all students and alumni as they plan for their career or further education.

We'll help you develop a personal career and/or education plan and teach you how to market yourself and your degree. We'll help you with job search skills, where to look for summer, part-time and post-graduation opportunities and, most importantly, how to succeed with your personal goals.

AND THEN YOU GRADUATE!

173,000+

U of G alumni live and work all over the world. What you'll quickly discover when you graduate is that the growth and experience gained here creates a lifelong bond that we all share. When you graduate you are #foreverGryphon.

alumni.uoguelph.ca

VISIT CAMPUS

TOURS

We are excited to offer in-person and virtual tour options! In-person campus tours depart at 10am and 1:30pm, Monday - Saturday year round!

Book your tour today at:
admission.uoguelph.ca/tours.

EVENTS

Register for an upcoming event at:
admission.uoguelph.ca/events.

Visit campus for our fall open house on
Sunday, November 5, 2023.

Explore science and engineering at U of G on
Sunday, November 12, 2023.

Experience our campus and connect with
current students and faculty on **Sunday, March
24, 2024.**

CONNECT WITH US

Scan the code below to learn more about our programs, services and the Gryphon experience!



FOLLOW US @:

 UofGAdmission

 UofGAdmission

 UofGuelph

CONTACT US

Admission Services
University Centre, Level 3
50 Stone Road East
University of Guelph
Guelph, ON, N1G 2W1

519-824-4120

admission@uoguelph.ca
find.yourself@uoguelph.ca

