

POSTGRADUATE PROSPECTUS

2019/20

Go further.

Coventry University

Ranked 13th in UK

Guardian University Guide 2019



“Coventry has become one of the most innovative of modern universities, bold with its vision of what the 21st century student experience should be.”

The Times and Sunday Times
Good University Guide 2019





Be inspired

My inspirational tutors taught me that HR is about relationships with people and have helped me understand how to collaborate, manage and lead people as well as form good relationships.

Dayana Dwi Florientine
MSc International Human
Resource Management

2nd in UK for Teaching Excellence (TEF)*

Our tutors are here to inspire your curiosity and passion for your subject. Whatever your goals and aspirations, they are here to facilitate your development, your understanding and your achievements so you can graduate with the confidence to succeed. See **page 18** to find out more.

* Times Higher Education metrics ranking 2017



Awarded Gold for outstanding
teaching and learning 2017

Stand tall



Rated 5 QS Stars for Employability*

Standing tall is a state of mind. With Coventry University careers support, paid work placement opportunities, and our relationships with global employers, we can help you to gain the workplace skills you'll need to feel head and shoulders above the rest. See **page 20** to find out more.

* QS Stars rating 2018

I hope to use what I learnt from my tutors, peers and work experiences and eventually open up my own consultancy firm.

Josephine W. Ndirithi
MSc International Marketing



True leader

**3 in 5 employers
expect graduates to
have leadership skills***

We want to bring out your natural leadership qualities. We can offer you CMI accredited modules in Consultancy, Coaching and Mentoring, Creativity, Change and Innovation, and Entrepreneurship, designed to ignite your inner leadership spark. See **page 22** to find out more.

* 21st Century Leaders Report,
Chartered Management Institute (CMI) 2018

The Chartered Management Institute (CMI) module was amazing and taught us how to lead a team, analyse and solve difficult company problems and come up with creative ways to interact with each other.

Eduard Rumen Georgiev
MSc Computer Science

Global ready



1st for overseas student experiences*

At Coventry University, we offer students many opportunities to develop global awareness with language classes, trips and work experience overseas. See the world with one of our global opportunities. Find more details on **page 24**.

* Based on the number of student trips abroad
- HESA 2016/17 UK

I went to Berlin with fellow art associates and discovered more about my tutor's artwork at the Sachsenhausen Memorial and Museum. It was a fantastic experience.

Sherrie Edgar
MA Contemporary
Arts Practice

City life

Top 5 UK Student City*

Coventry is among the top 50 student cities in the world, UK City of Culture 2021 and European City of Sport 2019. The city centre is undergoing a £300m transformation and the Duke and Duchess of Cambridge visited our new facilities in 2018 too. With so much happening in our city, it's a great time to join us. See **page 26** to find out more.

* QS Best Student Cities Index 2018

Coventry is an amazing city that embraces every culture into its city life. You are never really far from home when you are in Coventry. Truly a city of culture.

Sijin Thomas Cheriyan
MSc International
Business Management

Contents

About Coventry University

16	Vice-Chancellor welcome
18	Teaching excellence
20	Employability
22	Leadership skills
24	Global opportunities
26	City-centre campus
28	Subject specialisms
30	Study options
32	Research excellence
34	PhD studentships
36-43	Research spotlights
44	International students
46	Postgraduate support
48	Accommodation
118	Fees and living costs
120	Financial support
124	Visit us
126	How to apply
128	Course index
130	Key contacts

Subject areas

52	Art and Design
56	Humanities
60	Media and Performing Arts
64	Coventry Business School
66	Economics, Finance and Accounting
70	Marketing and Management
74	Strategy and Leadership
78	Coventry Law School
82	Computing, Electronics and Mathematics
86	Energy, Construction and Environment
90	Mechanical, Aerospace and Automotive Engineering
94	Life Sciences
98	Nursing, Midwifery and Health
102	Psychological, Social and Behavioural Sciences
106	Academic Writing
108	Trust, Peace and Social Relations
110	Coventry University London
114	Coventry University Online

The contents of this prospectus are correct at the time of going to press. However, because of the sometimes lengthy period of time between printing the prospectus and applications being made and processed by us, please check our website www.coventry.ac.uk (or, for Coventry University London, www.coventry.ac.uk/london or, for Coventry University Online, www.coventry.ac.uk/online) before making an application in case there are any changes to the course you are interested in or to other facilities and services described here. Where there is a difference between the contents of this prospectus and the Coventry University, Coventry University London or Coventry University Online website, the contents of the applicable website take precedence and represent the basis on which we intend to deliver our services to you.

If you are not able to access information online, please contact the University for the most up-to-date information concerning course content and accreditation, course fees, scholarships, bursaries and entry requirements for the relevant academic year. Contact details can be found on page 126.

By accepting your offer of a place with us, a Student Contract ("the Contract") will be formed between you and the University. The Contract will detail all of your rights and also the obligations you will be bound by during your time as a student and will also contain all of the obligations that the University owes to you.



Vice-Chancellor welcome

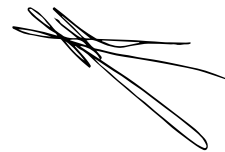
I'm delighted that you have chosen to find out more about postgraduate study at Coventry University. I hope to demonstrate why our forward-thinking approach, modern facilities and practical learning have resulted in Coventry being ranked 13th amongst UK Universities and the top modern university in The Guardian University Guide 2019. We offer more ways to study, with Coventry University London providing postgraduate qualifications in the capital and Coventry University Online, offering the chance to obtain a postgraduate degree entirely remotely. Our University has also been ranked in the top 100 universities in Europe for the quality of its teaching and learning and ranks top in the UK – and third in Europe – for how well it engages with its students in the Times Higher Education World University Rankings 2018.

The fact you are interested in postgraduate study tells me of your ambition. Like you, we are continually striving to improve. Not only are we investing £350m to improve our campuses and facilities, but we have also committed over £100m to support research.

The University is integral to the landscape of this city and it's an exciting time to be here. Coventry is UK City of Culture 2021 – a fantastic achievement and we cannot wait to see what it will bring to our city. We are also European City of Sport 2019, which we will celebrate with the opening of the new waterpark in the city centre as well as the new 50m pool at the Alan Higgs centre. These facilities are for everyone to enjoy an active lifestyle and improve well-being. The Commonwealth Games 2022 will be in nearby Birmingham, a great draw for visitors from around the world to the West Midlands region.

While we are proud of this city, our outlook is global. We conduct world-leading research with academic and commercial partners on every continent, while our students undertake professional and personal projects all over the world. We are committed to developing our students as global citizens; our approach to learning is guided by an internationally orientated perspective to reflect the global environment in which we operate. We consider our postgraduate students to be active contributors to the learning experience with valuable knowledge and insight to share. I look forward to welcoming you as an active and enthusiastic partner in our learning community.

Take the next step and discover for yourself why thousands of students choose this award-winning university every year.



Professor John Latham
Vice-Chancellor and CEO, Coventry University
Extraordinary Professor, Stellenbosch University



Teaching excellence

Be inspired by our tutors, who offer excellent teaching support and active learning. Our passionate staff are here to support you through a wide range of teaching methods and will encourage you to take responsibility for your own learning and development.

Our teaching staff consider employability when creating our courses and respond to the changing needs of society and industry. Our courses are designed to meet the needs of industry today, with contemporary teaching and learning activities. There are opportunities to develop work-based learning and skills to flourish in the workplace.

As a postgraduate student, you will participate in assessments throughout your study to drive your learning. Our students experience a wide range of assessment techniques, and formative and summative feedback will enable you to demonstrate what you're learning. We know that learning happens in a variety of contexts, so we offer extra-curricular opportunities as well, which can boost your employability and encourage an understanding of social responsibility.

As a postgraduate student here, you'll join a global community of staff and students committed to lifelong learning and after graduation, you will become a valued member of our alumni.

www.coventry.ac.uk/awards

What to look out for

Diversity



We value diversity and our staff hail from a wide variety of cultures, succeeding with us irrespective of background. We employ pioneering research, extensive performance data and stakeholder feedback to enable us to understand and address inequalities.

Inspiring research



Our Research Centres are focused on real-world issues ranging from positive international relations by the Centre for Trust, Peace and Social Relations to work by the Centre for Agroecology, Water and Resilience in Australia's Great Barrier Reef.

Progression

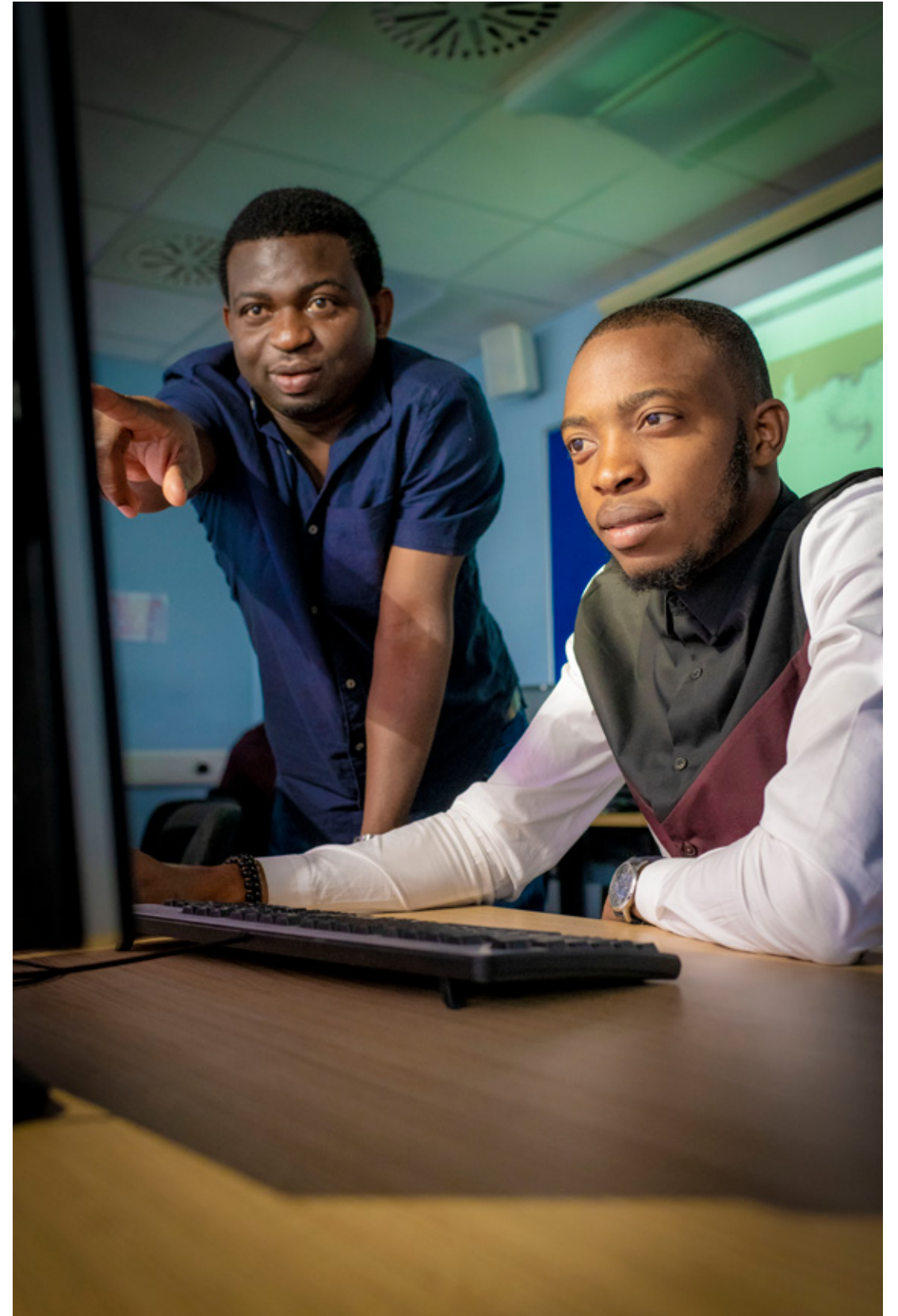


We use a wide variety of assessment techniques and offer feedback so you can see how you're progressing. We also encourage learning opportunities outside of the curriculum such as voluntary work, societies or sports teams.

Stimulating environments



Our stimulating learning environments include the Disruptive Media Learning Lab, the £59m Alison Gingell Building, our £50m state-of-the-art Computing and Engineering building, The Tank Media Studio, and our state-of-the-art Trading Floor and DigiComm Lab.



Employability

It takes confidence to walk into an interview and believe you're the best candidate for the job. It takes confidence to set up your own business in a competitive industry. It takes confidence to study to postgraduate level and speak as an expert in your field. At Coventry University, we can help you towards this kind of success.

Employability is embedded throughout our courses, with employability units in every faculty alongside real-world teaching, lecturers from industry, and the unique Professional Development module, available on most courses, which is accredited by the Chartered Management Institute. Our Careers Service can also support you with advice and guidance. If you want to make your career work, we can help.

Our central careers support team can help with successful CV writing, articulating your skills to an

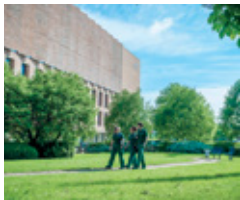
employer, interview techniques, and creating a job search strategy. You can speak one-to-one with a career specialist, with tailored support for both taught master's and research courses. Taking a development approach, one-to-one consultancy can help you to understand the labour market and make the transition from academia to an employer, or transition into further study such as a PhD.

If your ambitions lie in setting up your own business, our Enterprise Hub supports and develops traditional and social enterprises created and run by our staff, students and alumni and has been awarded the Social Enterprise mark in recognition of a commitment to sustainable local business.

www.coventry.ac.uk/employability

What to look out for

Health and Life Sciences



Health and Life Sciences professional work experience partners* have included the NHS and GSK (GlaxoSmithKline). Many Health and Life Sciences postgraduate courses also include a 'with Professional Experience' option.

Arts and Humanities



Facilities include two printing studios, four fashion studios and two laser cutting rooms, a digital design workshop, automotive design clay workshops and dance, theatre and live music studios housed in a converted Art Deco cinema.

Business and Law



You could participate in work experience, an internship or consultancy project as part of an FBL course which would typically last between 8-12 weeks. Previous employers include** Coventry City Council, Jewson and Raspberry Golf.

Engineering, Environment and Computing



The award-winning EEC Futures runs employability events on campus such as the EEC Futures Careers Fair - an annual event with more than 50 employers and Guidance Lectures with workshops and employer presentations.



Leadership skills

The University offers opportunities to realise your leadership potential and learn some of the skills you'll need for a management role, or running your own business. If you're willing to go the extra mile in pursuit of a management role, then a postgraduate qualification with us can be an excellent route.

Most of our postgraduate courses have elements of leadership embedded within the course content. There are many other opportunities to develop leadership skills here too, such as with Coventry University Students Union (CUSU), as an elected Student Leader, or by joining one of over 130 student societies and taking a leadership role.

Most of our postgraduate courses also include one of four Professional Development modules accredited by the Chartered Management Institute (CMI), leading to a professional qualification. The modules are:

Consultancy; Coaching and Mentoring; Creativity, Change and Innovation; and Entrepreneurship. The modules are designed to help your transition from academia to the workplace, by practicing some of the skills that managers and business owners use every day. This programme of study is available at our university and participation in the course automatically enrolls you as an Affiliate Member of the CMI during your studies.

We have engagement with many companies, and CEOs have volunteered their time to come and talk to our students – the leaders of the future. The CMI modules run across all subject disciplines, so participation means you could mix with students from other courses, grow your network and learn how leadership works across different career routes.

www.coventry.ac.uk/professional-development

What to look out for

CMI module



The University partners with The Chartered Management Institute to offer a unique programme of CMI accredited modules that are embedded within our postgraduate courses, to help you to develop useful employability skills.

Student Leaders



Coventry University Students Union (CUSU) is student-led. Student Leaders are elected from and by students to represent their views within CUSU and across the University. The roles are an excellent opportunity to develop leadership skills and make a difference.

Ambassadors



Postgraduate Ambassadors help out at Open Days, campus tours and fresher's week. The work is part-time, paid, can fit around your studies and could help you to develop leadership skills by offering advice and guidance to others*.

Student societies



We have more than 130 student societies and more than 50 sports clubs at CUSU, so you're bound to find something you like. We also offer a great opportunity to take on a leadership role with your peers and develop transferrable workplace skills.



Global opportunities

We're the university chosen by Coventry locals as well as students from over 130 countries. Our academic staff, tutors and researchers hail from around the world too and their work has a global impact, making a difference to communities ranging from Amazonian Brazil to Dubai.

If you're from outside the UK and on one of our postgraduate courses, you could apply for UK-based work experience*. The Centre for Global Engagement (CGE) has a dedicated team that offers work opportunities**, including short-term and long-term individual or group placements. As long as you have the right visa permissions, these opportunities are a great way to gain employability skills, a reference from a UK employer or CGE, and practice your English.

As a university with a diverse population, we run various projects promoting multiculturalism. Our aim is to create a greater sense of community and to aid inclusion and dialogue between those with cultural differences, through activities.

We offer many global opportunities for home and non-UK postgraduates. CGE can help you to gain an international experience in a choice of over 100 different countries and offers a variety of programmes, such as the extracurricular Global Leaders Programme (GLP). It's designed to develop global leadership skills with advanced workshops, global networking, international experience and exposure to inspirational industry leaders. International trips are available to North America, Europe, South America and Asia (Fees apply).

www.coventry.ac.uk/cge

What to look out for

IMPETUS



The IMPETUS training programme offers online courses and workshops designed to improve your cultural awareness and develop new knowledge useful for working in a multicultural environment.

Linguae Mundi



This is our innovative foreign language programme. You could explore one of 30 different languages in a practical and interactive environment, which is great practice for if you choose to visit or work overseas in the future.

Global experience



CGE promotes and sources opportunities for students to participate in a wide range of international activities such as short field trips, conferences, research projects and placements.***

Global Leaders Programme (GLP)

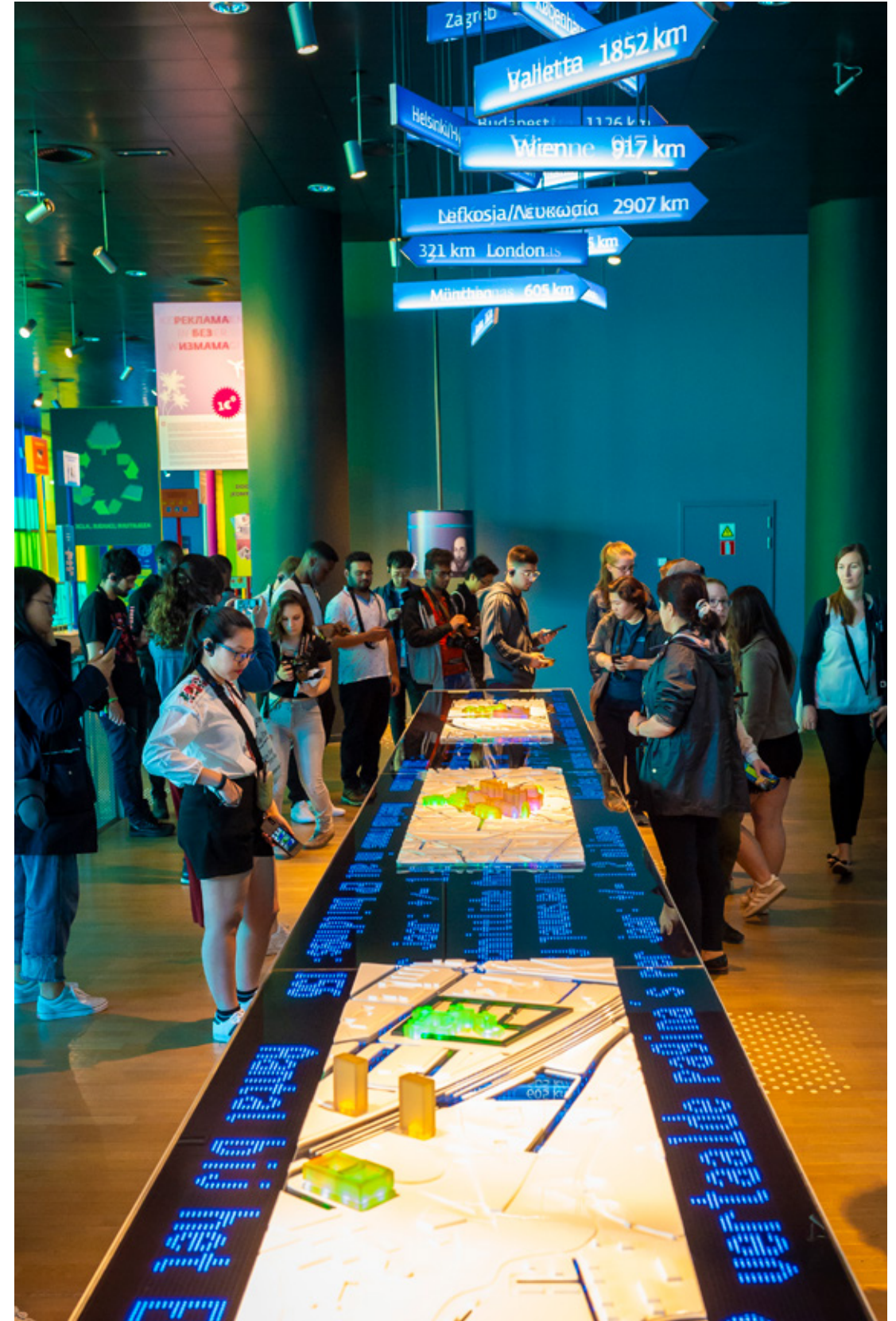


Our Global Leaders Programme is an optional extra offering experiences and activities such as language classes, advanced workshops and global networking opportunities with industry experts, in addition to your qualification**.

* Depending on the conditions of your visa, and also subject to application.

** You would need to cover your own living expenses while carrying out any unpaid work experience/placement.

*** Subject to availability and fees may apply.



City-centre campus

You're choosing a global city as well as a global university. Coventry is a city with an international feel. Our University currently has more than 11,000 international students studying with us from more than 130 different countries.

Situated in the heart of England, just one hour from London and 20 minutes from Birmingham by train, Coventry is among the top five student cities in the UK* and voted the second-best UK city for young adults**. Choose to live in our city-centre campus and you'll find you're usually near to where you want to go. With shops, theatres, cinemas, the award-winning Ricoh Arena, Skydome and restaurants featuring world cuisine on your doorstep, you'll find something to appeal to every taste.

In 2018 we celebrated 175 years in Coventry. We've evolved from humble beginnings as a Design School with around 50 students in 1843 to a global institution today, with around 30,000 students across the UK alone. The city is evolving too. Multi-million-pound investments have transformed the city and future developments include a £59m central business quarter and £300m city-centre improvement scheme with shops, a cinema, hotel and apartments***. We are also investing around £89m (between 2016-19) in brand new student accommodation which will also boost the regeneration of shops and services in the city centre.

www.coventry.ac.uk/cityliving

What to look out for

Culture



Coventry is famous for Lady Godiva, the magnificent cathedral and acclaimed Transport Museum. It's the birthplace of 2-Tone music, an early example of the Penny Farthing bicycle and jet engine pioneer, Sir Frank Whittle. And we're the home of the iconic Black Cab taxi.

Social



The city centre offers a good selection of cafés, bars and restaurants where you can meet with friends. There's a choice of theatres and cinemas in the city, and student societies are great for meeting friends and gaining transferrable workplace skills.

Events



The Ricoh Arena, the Godiva Festival and the Biggest Weekend attract the crowds and the big-name artists. The Ricoh also runs a calendar of sport events. Keep an eye out for society and faculty events throughout the year too.

Country escapes



Escape the city for the day to the War Memorial Park or just a few minutes to the east Coombe Country Park. You also have Shakespeare's Stratford-upon-Avon, historic Warwick Castle and picturesque Royal Leamington Spa close by.



* www.fenews.co.uk/press-releases/16538-best-uk-student-cities.

** UK Today: Best city to be Young, Legal and General Report 2013. *** Coventry's Story, Visit Coventry website 2016.

Subject specialisms

At Coventry University, we have four faculties with additional support for your subject of interest. Examples of support include subject-focused employability units in addition to our central careers provision, to help provide you with the right kind of specialist careers support for your chosen subject area. You can also meet like-minded peers and tutors who share your interests within your subject area.

Arts and Humanities

Our passionate and dedicated teams within Arts and Humanities have been inspiring and developing leading artists, designers, creative practitioners, performers, writers and thinkers for more than 175 years.

Our impressive graduates continue to make their mark winning national and international competitions, publishing and having their work performed and broadcast by the BBC and other international platforms. Our alumni include Oscar winners and nominees, Turner Prize nominees, a portrait painter to the Queen and influential figures in the arts, publishing, music, and film and television industries.

Business and Law

Business and Law have been taught at Coventry University for over 50 years.

Our business students enjoy facilities which enable experience learning in realistic business settings including the state-of-the-art Trading Floor, the largest of its kind in Europe, with 42 dual-screen terminals powered by Bloomberg, and our Business Simulation Suite, which allows students the chance to tackle strategic decision-making problems within real life simulations. If you study marketing, you'll have access to our DigiComm Lab - a digital marketing laboratory - enabling you to produce digital campaigns in readiness for your career. Our law students can use our Moot Room, a mock courtroom where you can practice advocacy skills in a realistic environment.

Many of the courses are accredited by leading professional bodies, ensuring they meet the high standards required by business and industry - while our students also have access to dedicated employment teams who strive to help them enter the job market.

Engineering, Environment and Computing

Situated in the birthplace of the British motor industry and the historical heart of UK manufacturing, we have a strong tradition of business-focused education and research, working with some of the biggest names in industry, including Jaguar Land Rover, GE Aviation, Cummings, Intel, Atkins, Vinci, Balfour Beatty, Galliford Try and Severn Trent.

Our £50m state-of-the-art building is home to a range of facilities including the new F1 simulator, two flight simulators, the hydraulics lab including the new Environmental Chamber, Ethical Hacking lab, Architectural technology studio, Games Development lab, Advanced Manufacturing and Engineering at Unipart, a wind tunnel designed and supplied by Mercedes AMG Petronas. And we even have our own full-sized Harrier T4 aircraft. This is just some of the equipment we use for hands-on, practical teaching.

Health and Life Sciences

Coventry University is proud to be one of the largest providers of health and life sciences courses in the UK, with over 6,000 students and 400 staff dedicated to making a difference to local, national and international communities.

Our postgraduate courses and doctoral routes are complemented by our strong post-qualifying Continuing Professional Development portfolio and vast range of accreditations and partnerships with professional bodies and employers.

You can experience simulated real-world scenarios in the multi-million pound Alison Gingell Building, opened by the Duke and Duchess of Cambridge on 16 January 2018. This is a world-class environment with facilities including industry-standard laboratories, a sports therapy clinic, sport and exercise science laboratories, a strength and conditioning facility and a fully equipped ambulance, operating theatre, hospital wards and therapy suites.



Study options

Postgraduate study

There is more than one way to study after you graduate and we offer a summary of the options here. We offer postgraduate qualifications through teaching, online learning or research. The entry requirements vary depending on the course, so even if you think you wouldn't qualify – you might.

With more than 140 taught courses across Coventry University and Coventry University London, as well as two types of postgraduate research degree (master's by research and PhD), we hope you'll find something you like. We are evolving our courses to respond to the needs of society, government and business. We want to ensure that your qualification will help you to steer your career in the right direction.

Certificate (PgCert) and Diploma (PgDip)

- A standalone award
- Structured in a similar way to master's courses
- Typically six to nine months in length
- Usually assessed by exams and coursework
- No dissertation required

Master's degree

- Usually intensive taught courses with a dissertation or project
- Full-time study typically run over one full year
- Part-time study is typically two years
- Possible to exit a master's with a postgraduate certificate or diploma – please check programme specifications or with the relevant faculty registry for further details
- Choose from: Master of Arts (MA), Master of Business Administration (MBA), Master of Laws (LLM) and Master of Science (MSc)

Master's by research

- Choose from: MAR/ MScR
- Pursue an independent research project with expert supervision and support
- One year full-time or two to three years part-time
- Link your research project directly to current or future career interests
- A taste of what it might be like to do a full PhD

Master's online

- Learning takes place online
- Internationally-recognised qualifications
- Study from anywhere in the world with internet access
- Access to world-class teaching that fits around your lifestyle and other commitments
- Options to spread the course over two – five years
- Dedicated Student Experience Officer for support while you study

PhD (Doctor of Philosophy)

- Intensive study requiring a substantial time commitment
- Courses are usually three to four years full-time or five to six years part-time
- Conduct original, independent research to make a significant contribution to a specific subject
- Includes research training sessions
- Guidance available from a designated academic team
- Produce a supervised thesis (80,000-100,000 words), suitable for publication
- Gain the title of PhD (Doctor of Philosophy) upon successful completion

Professional Development module

Coventry University was the first university in the UK to offer a postgraduate module developed in conjunction with the Chartered Management Institute (CMI) at no extra cost to the student. The Professional Development module is a unique opportunity on most of our full-time master's courses.

The module aims to give practical leadership skills, and the ability to find solutions to the complex issues that you may experience in organisations. If you successfully complete the module, you should gain two additional qualifications. For example, a CMI Postgraduate Certificate in Strategic Leadership and Management and a CMI award in Professional Consulting.

Upon registration with CMI, you will gain CMI student membership including access to LeadershipDirect, a dedicated online multimedia knowledge base, the online portal Career Development Centre, and an online mentoring service.

www.coventry.ac.uk/professional-development



Research excellence

Excellence with impact

Choose a research master's or PhD with Coventry University where our research strategy is 'excellence with impact'. Research excellence has originality, significance and rigour, conducted with and for external beneficiaries and is designed to make an impact on the real world. Our specialisms range from award-winning research into the migrant crisis in the Mediterranean, to finding ways to prevent suicide, to our world-first research to create a simulated heart in laboratory conditions.

With more than 750 researchers working in our interdisciplinary Research Centres, representing niches where Coventry University can be dominant, we have an ambition to break into the world's top 100 modern universities under 50 years old.

So, if you strive for excellence and would like to have an impact on real-world issues happening today, we'd like to hear from you.

Our students are central to our research mission. Our Doctoral College provides centralised research PhD to Professor training for our research students and staff. We have a number of international partners enabling our students to study outside of the UK and experience different cultural and research environments with one of our partner institutions around the world.

We give as much priority to high-quality research as we give to high-quality teaching and we are investing in our research. Viewed as one of the handful of 'business-facing' or 'business-engaged' modern universities, we were chosen to receive Government funding to create our £32m Institute for Advanced Manufacturing and Engineering. In addition to external research funding, the University is committing more than £100m investment in research.

Almost two-thirds (61%) of our research was judged to be 4* world-leading or 3* internationally excellent – the highest classifications possible – in the most recent Research Excellence Framework 2014, which is the system for assessing the quality of research in UK higher education institutions. In that same 2014 Framework, 92% of our research was rated as 4*, 3* or 2* and all nine subject areas submitted, referred to as units of assessment, incorporated elements of world-leading research.

Our Research Centres

Research is delivered in our dedicated and specialist Research Centres:

- Centre for Agroecology, Water and Resilience
- Centre for Sport, Exercise and Life Sciences
- Centre for Business in Society
- Centre for Dance Research
- Centre for Fluid and Complex Systems
- Centre for the Built and Natural Environment
- Institute for Future Transport and Cities
- Centre for Advances in Behavioural Science
- Centre for Innovative Research Across the Life Course
- Centre for Trust, Peace and Social Relations
- Centre for Global Learning: Education and Attainment
- Centre for Postdigital Cultures
- Centre for Financial and Corporate Integrity
- International Centre for Transformational Entrepreneurship



PhD studentships

In addition to self-funded opportunities, we offer many fully-funded and part-funded PhD studentships within areas of research undertaken by our Research Centres and our industrial collaborations. If you believe in our research strategy 'excellence with impact' and would like your research to make an impact on real-world issues, then we strongly encourage you to apply.

Our Doctoral College is here to support you on your PhD journey. We'll help you to develop PhD-level skills with mentorship from those who have been through the process themselves and professional training.

The work of our specialist Research Centres can be grouped into five key areas, listed below. You may already have a PhD proposal in mind, but even if you don't, we hope you'll find something here that will inspire you. You can search our current PhD opportunities here: www.coventry.ac.uk/research

Safety and security

Our award-nominated research into the migration crises in the Mediterranean, led by some of the world's leading experts in human security, is helping policymakers and the public to understand and reassess the plight of refugees in southern Europe. Our community-based work to eradicate female genital mutilation is producing award-winning prevention initiatives for girls and women at risk of becoming victims. And, our cyber security researchers are pioneering cutting-edge ways to keep us – and our critical infrastructure – safe from ever more sophisticated online attacks.

Sustainability and resilience

Our scientists are carrying out critical conservation work to reverse the decline in bumble bee populations around the UK. Our experts in humanitarian operations are on the ground in Iraq and Syria helping refugees harness agriculture to make their camps better places to live. And, our collaborative research with businesses in the rail sector is bolstering the infrastructure on which millions of commuters around the country rely daily.

www.coventry.ac.uk/studentships

Health and wellbeing

Our experts in children's literacy are working with kids with developmental disorders to create learning programmes which will help to ensure they have the best chances in life. Our research into mental health and the risk of suicidality among people on the autism spectrum is internationally-leading and breaking ground in the field. And, our cutting-edge work capturing and analysing human biomechanical performance is helping gardeners, dancers and sportspeople avoid injury.

Intelligent products and processes

Our award-winning Microcab hydrogen fuel cell cars – designed, built and developed on campus – are pushing the boundaries of low carbon vehicle development. Our biotechnology specialists are carrying out world-first research to create a simulated heart in laboratory conditions to avoid the need to test drugs on humans or animals. And, our manufacturing and engineering experts are working with industry to come up with a novel way to save weight in automotive systems.

Creative cultures

Our world-leading expertise in vehicle innovation and styling has led to the creation of a unique national centre for transport design in Coventry in support of the UK automotive and design sectors. Our specialists in dance are using cutting-edge motion capture technologies to document and learn more about European dance heritage. And, our research into how digital environments can be exploited is opening up new opportunities for cultural institutions to share their content with the world.

Research degrees

Your research degree would belong to one of our 14 Research Centres. As an enterprising university, we also offer a range of Professional Doctorates, Industrial and International programmes. Our International programmes use a distance-learning model with one of our partner universities around the world. There are opportunities for external funding, studentships or scholarships to help fund your research.



Research spotlight: Rosamaria Cisneros

Strictly digital

Our academic staff are engaging with many real-life research topics around a number of areas. Here, we dig a bit deeper to discover what some of them have been up to.

Rosa is Senior Research Assistant with C-DaRE (Centre for Dance Research). She is a Dance Historian and Critic, Roma Scholar, Flamenco Historian and Peace Activist, as well as a professional Dancer, Choreographer and qualified Teacher.

Tell us a bit about your research?

The WhoLoDancE (Whole-Body Interaction Learning for Dance Education) project brings together dancers, choreographers and technologists to digitise, preserve and convey European dance using technology. We recorded a wide range of dance movements with motion capture techniques, like those used in blockbuster films. The study focused on four dance genres: Ballet, Contemporary, Flamenco and Greek folk dance.

What can this research be used for?

The technology can help students or artists learn more about dance and their own performance with one of four 'tools'. The first is as a "blending machine" that enables users to search across the repository of dance moves, and build new sequences of movement. So, you could create an avatar that dances with Flamenco arms and Ballet steps.

The second use is as an "annotation tool" for in-depth analysis of movement sequences. It helps young dance learners to identify and articulate the moves and learn to copy them. You can play the sequences back from all angles, giving a greater depth of understanding.

The third use is as a low-level movement "sketching tool". You can break a dance down into pieces and single out specific moves. The fourth and final tool is the library of dance moves that we have created. Dance is ephemeral – it lives and dies. Now we have recorded these dances for posterity and the cultural heritage lives on.

Who else did you work with on this project?

It was a consortium of 10 partners including the high-end commercial motion capture company in Amsterdam,

Motek, myself, Professor Sarah Whatley PhD and Dr Karen Wood of C-DaRE at Coventry University, other universities, two other dance companies from France and Spain and a Greek folk dance group.

How did you get into this area of research?

I started dancing at a young age – my mother passed it on from the Roma community and I trained in ballet and contemporary. I come from a poor family – my mother always encouraged me to go to school and University in the US. My mother didn't want me to study dance, so I was nearly a marine biologist! We agreed I could study dance and teaching. I went on to perform professionally in New York and internationally. My interest in other aspects of dance led me to pursue a master's in Dance History and Criticism. After my master's I started combining the practice and the theory in an organic way. I love doing interdisciplinary research and linking research with the community at a grassroots level.

What is your proudest moment of your career so far?

A few years ago, I organised two week-long festivals at Coventry University: Flamenco Coventry and Romani Week. They brought the marginalised Romani community into the University and provided a space for dialogue. The festivals brought arts, culture and technology together and showed how they can be used as bridges towards intercultural communication. The festivals offered the city of Coventry exciting programmes of dance, music, talks and film screening culminating in dance galas which saw people from the general public and the Romani community coming together to break down stereotypes.

Do you have one tip that you would like to give your students?

Work hard! Hard work always pays off. Picasso said, "Inspiration exists but it has to find you working". Respect the history of dance and know your part of a larger picture, because there's a legacy – it doesn't start and end with you.

Explore Rosamaria's research further:

www.coventry.ac.uk/rosamaria-cisneros



Research spotlight: Dr Lindsey Appleyard

Holding lenders to account

Dr Lindsey Appleyard is a social scientist with research interests around financial geographies, specialising in financial inclusion and inclusive economies. Lindsey has successfully been awarded funding for research and impact from a range of sources, including RCUK, Barrow Cadbury Trust, Carnegie Trust UK and the Money Advice Service. Her research has been disseminated at a variety of international and national conferences (such as RGS-IBG, AAG) and has been published widely in peer-reviewed journals. She teaches postgraduate, qualitative research methods and is accepting PhD students.

What is your research about?

My research broadly covers two areas. The first is 'financial capability'. Through research, I hope to influence policy decision making to ensure that everyone has the support they need to be financially capable so they can make sound financial decisions.

The second area concerns financial inclusion and participation in the financial world. I want to ensure that everyone has access to quality, affordable financial services and products. There are good lenders and there are bad lenders!

You've done a lot of research into payday lenders, like Wonga. Weren't they banned recently?

They weren't banned, but in 2015, the payday lender sector was reformed when the government brought in new laws such as capping the amount of interest these lenders could charge. This has made it harder for some financially-squeezed groups to obtain payday loans.

So how do financially-squeezed people borrow money?

Since lending rules were tightened we thought we'd see this demographic turn to other high-cost lenders. What we actually found was that those turned down by payday lenders either went to another payday lender, or turned to family and friends for money instead – the 'Bank of Mum and Dad'.

What we also found is that although family members may not employ the debt collection tactics of doorstep lenders, there are still issues with borrowing from them. Borrowers may suffer psychologically and those asked to lend felt an emotional burden of feeling obliged to help their loved ones, even if they couldn't really afford to.

What can the government do to help people who need to borrow money?

My recommendation from my research is that there needs to be access to low interest or zero interest loans for people excluded from mainstream banks. The Government Social Fund was scrapped and a new programme was put in place, but there is a geographical unevenness with the distribution of money, or a 'postcode lottery' – so it depends on where you live.

I recommend the government introduces a No Interest Loan Scheme (NILS). A similar scheme is currently successful in Australia, and it works well for the financially excluded.

Why did you get into this area of study?

I wanted to make an impact in academia and beyond. To help to solve real-world problems by understanding them and then finding real-world solutions.

What is your proudest moment?

I recently won the Coventry University App competition in 2017 with my app CreditU. This app is designed to help people manage their money better. We have turned this idea into a business that was formally launched in October 2018. The app provides an online platform so users can locate local affordable savings and credit provision, or ethical lending, as well as a money management tool. If you study a PhD at this university, you could gain support to create your own business or social enterprise as part of your PhD.

If you had to pass on one essential financial tip, what would it be?

Plan for the unexpected with a rainy-day fund!

Explore Lindsey's research further:

www.coventry.ac.uk/lindsey-appleyard



Research spotlight: Dr Konstantinos N Gyftakis

The fault fixer

Here we shine a light on the work and research of Dr Konstantinos N. Gyftakis, Senior Lecturer in Electrical and Electronic Engineering with the School of Computing, Electronics and Mathematics, and an Associate of the Institute for Future Transport and Cities. He is also a Member of CISE (Electromechatronic Systems Research Centre), Portugal, an IEEE Member as well as Member of the IEEE Industrial Electronics Society and the IEEE Industry Applications Society. His research interests focus on Condition Monitoring, Fault Diagnosis and Prognosis of Electrical Machines. He has authored/co-authored more than 70 papers.

Which courses do you teach?

I teach modules related to electrical engineering and especially electric power engineering at undergraduate and postgraduate level. I am the Module Leader of “Electrical Machines and Drives” of MEng Electrical and Electronic Engineering. I am also the Module Leader of “Electrical Machines” of MSc Electrical Automotive Engineering.

Tell us a bit about your research?

Electrical machines are the heart of the modern world. They operate as motors or generators while producing the electric power, or consuming it to produce mechanical work. Electrical machines need to operate reliably and safely and unexpected breakdowns inflict serious financial costs and compromise the safety of plants, systems and users. Detection of faults at incipient fault levels is required before they evolve in severity and lead to catastrophic breakdowns. This is exactly where my research focuses. To develop cheap, reliable, non-intrusive and online diagnostic methods to detect and identify various faults in electrical machines so that proper maintenance and service can be scheduled without the previously mentioned negative impacts.

Could you explain fault diagnosis?

In electrical machines, fault diagnosis consists of measuring and analysing various parameters of the operating electrical machine while the machine is in operation and without opening it, in order to detect a fault while its severity is low and harmless.

What impact does your research have on the world outside of academia?

This research is applied research, meaning that it is directly related to, and used by, the real world. Can you imagine what would happen if there was an unexpected shutdown of a large electric generator? A wide area would not have electric power, compromising safety and lives in many ways – industries and shops would have to stop their operation leading to huge financial loss. Fault diagnosis allows the user to detect the fault and avoid negative impacts.

As an example, I recently visited a hydro plant overseas where I measured various induction motors working in pumping applications. After applying state-of-the-art methods, we were able to assess their health and point at those that required urgent maintenance.

What is your proudest achievement in your career so far?

I think that my proudest achievement is when I devised a novel off-line method to detect the static electricity in three phase induction motors. Up to that moment, this fault type was difficult to detect with conventional diagnostic methods. I submitted my paper in one of the prestigious journals of IEEE and the paper was finally accepted. I still remember the excitement when I received the acceptance letter from the journal!

What one tip would you like to pass on based on what you've learnt over your career?

Engineering and science is more complex and demanding than it used to be, leading modern engineers, scientists, researchers and academics to specialise. However, modern problems have both depth and width. The only solution to satisfy this demand is that we collaborate and form teams. Nowadays we are talking about successful groups rather than individuals. It is a great pleasure to work with others towards a common goal and I am trying to pass this on to my students.

Explore Konstantinos' research further:
www.coventry.ac.uk/kostas-gyftakis



Research spotlight: Professor Mike Duncan

Making exercise child's play

Professor Mike Duncan is a Sport and Exercise Scientist, a Chartered Scientist with the Science Council, a member of the European College of Sports Science, American College of Sports Medicine, and a Fellow of the British Association of Sport and Exercise Sciences. He has published over 180 peer reviewed scientific papers on topics relating to physical activity, exercise and sports science. He teaches MSc Strength and Conditioning, and MSc Science of Youth Sport Coaching.

Tell us a bit about your research?

At the moment, the majority of my work is focussed on Fundamental Movement Skills or Physical Literacy. Essentially, if children don't learn fundamental movement skills, such as running, jumping, catching and kicking by adolescence, then in adulthood they are more likely to stop being physically active and stop exercise.

We carry out research in schools and community sports clubs, examining how fundamental movement skills relate to physical, social and psychological health in children. We do a lot of intervention work, particularly looking at the benefits of resistance training in children.

What kind of strength training do you do with children?

We use age-appropriate strength and resistance training which is based on how children play in a playground – skills like jumping, hopping and skipping. We also use animal-based movements such as bear-crawls, where the children move around on all fours helping to enhance joint mobility and their ability to carry their own bodyweight. It's fun, children can relate to it and enjoy it.

Which elite athletes have you worked with?

I have worked with a wide range of elite athletes, both at junior ages and as adults. This has included professional football clubs where my expertise in assessment of body composition or use of GPS monitoring to assess training loads has been used. I have worked in sports including basketball, volleyball and ice hockey with national and international level teams and athletes working with teams to monitor performance.

Most recently I have worked with the Badminton World Federation examining how badminton players respond to high pressure situations under fatigued conditions during matches. This has involved working across the disciplines of physiology, psychology and motor control to predict at which point during a badminton match, the players' skills will fail. Badminton requires the performers to execute skilled movements at speed and in conditions where they are physically fatigued. Our work has pinpointed that skill failure is more likely to happen when players are fatigued but also under conditions of high cognitive anxiety.

We can work with those athletes to overcome the physiological effects of pressure, and ultimately improve their performance.

What is your proudest achievement?

The Gruffalo Programme which I worked on with pre-schoolers was a big intervention in schools to combine movement with story. The Gruffalo is a story that children are familiar with and by combining the story with fundamental movement training, we saw improvements not only in the children's movement skills but also a big improvement in their language development. The changes that we were able to elicit are key to enabling children be physically active for life and build a foundation for engaging in organised sports, as well as having a positive impact on academic achievement all before the children started school.

What one fitness tip would you pass onto others?

Strength is king – in any exercise programme or even in daily life, a person has to be strong enough to accomplish whatever the demands of the exercise or task. So, any work we do here at Coventry builds from a base of strength first.

Explore Mike's research further:

www.coventry.ac.uk/michael-duncan



International students

We understand that moving to a new country can be daunting, which is why we're here to welcome and support you during your time with us in Coventry. You won't be alone – we have more than 11,000 international students from 130 different countries across the Coventry University Group and more than 2,500 of them are postgraduate students. We're here to help you settle in quickly, offering support ranging from meet and greet airport services to a dedicated induction.

International Office

Our International Office includes multilingual staff, many of them with personal experience of living and studying abroad.

We can answer general questions on pre-arrival, visas, immigration, finances, employment regulations, culture shock and post-study ideas. We will keep in touch with you throughout the year, sending updates to make sure you have all the information you need to start your course.

For more information:

T: +44 (0)24 7765 2010

E: welfare.io@coventry.ac.uk

www.coventry.ac.uk/international

[f /coventryuniversityinternational](https://www.facebook.com/coventryuniversityinternational)

[@covintstudents](https://www.instagram.com/covintstudents)

[@coventryuni_int](https://www.instagram.com/coventryuni_int)

Meet and greet services

If you fly into Birmingham Airport or London Heathrow, we offer a free Airport Meet and Greet service. Find out more about this service here:

www.futurelets.co.uk/airport-transfers

We also offer a premium service, available throughout the year, where a private chauffeur will meet you at the airport and take you directly to your accommodation in Coventry. Typical charges for the premium meet and greet service are £75 from Birmingham Airport to Coventry, and £220 from London Heathrow to Coventry.

Please note that both services must be booked in advance. To book or find out more, please check our website: www.coventry.ac.uk/meetandgreet

English language support

Coming to a new learning environment can be challenging. Our Pre-session English courses will help prepare you before you start your course. You'll learn the new language and more about our academic culture – which may be very different to what you're used to.

You will be taught by highly qualified and experienced tutors who understand the challenges faced by international students. The length of your course will be determined by your current level of English and each component score for reading, writing, speaking and listening. To be successful in your degree, you must be able to demonstrate use of all four English language skills.

You can use the table opposite to calculate the length of course you may need. Pre-session English is not compulsory if you can demonstrate the right level of IELTS for your chosen course.

If you need a Tier 4 visa to study in the UK, you will need a Secure English Language Test (SELT) certificate in order to gain entry onto a Pre-session English course. You must sit an IELTS test at a test centre that is approved by UK Visas and Immigration (UKVI) to deliver a SELT.

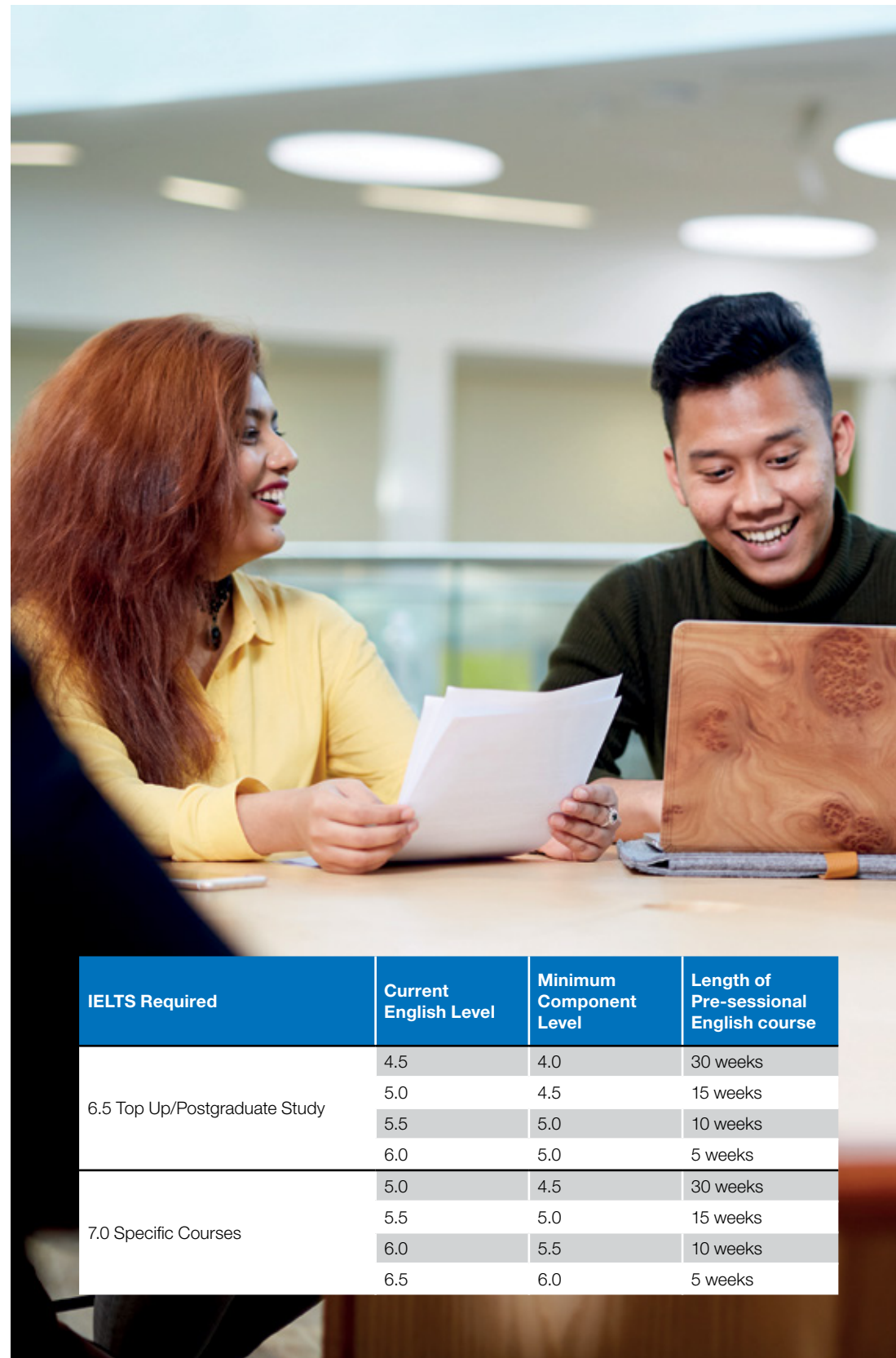
Find out more information including fees:

www.coventry.ac.uk/pse

Master's qualifying courses

Even if you don't currently meet the academic entry requirements for our postgraduate courses, you could participate in an ONCAMPUS Coventry master's qualifying course, which offers progression to a number of our postgraduate courses.

Find out more: www.oncampus.global/coventry



IELTS Required	Current English Level	Minimum Component Level	Length of Pre-session English course
6.5 Top Up/Postgraduate Study	4.5	4.0	30 weeks
	5.0	4.5	15 weeks
	5.5	5.0	10 weeks
	6.0	5.0	5 weeks
7.0 Specific Courses	5.0	4.5	30 weeks
	5.5	5.0	15 weeks
	6.0	5.5	10 weeks
	6.5	6.0	5 weeks

Postgraduate support

We offer a range of helpful support services to our postgraduates, whether you're looking for quiet places to study or to network and be seen.

Social and wellbeing

Right at the heart of our campus is **TheHub**, a place to meet friends, buy essentials, have a coffee, or eat in the food court. **TheHub** is also home to organisations that are here for you during your time as a postgraduate.

- Information Points

These are located across campus, in the Student Centre and in **TheHub**. These are the first points of contact for students, where staff aim to respond to queries from start to finish, resolving any issues presented.

- Health and Wellbeing

This is home to the Medical Centre. It's here in case you need to see a doctor, or if you have any health issues, need welfare, have a disability, need counselling or require mental health services.

- The Spirituality and Faith Centre

The Spirituality and Faith Centre provides space for reflection and meditation, multi-faith chaplains, a non-denominational chapel, Muslim prayer rooms with ablutions, and a spiritually-focused social space.

- Sport and Recreation Centre

The Sport and Recreation Centre is just a short walk from **TheHub**. As a postgraduate, you can gain subsidised membership and enjoy a range of activities and classes facilitated by dedicated staff.

- CUSU Postgraduate Community

Part of CUSU (Coventry University Students' Union), the CUSU Postgraduate Community was established to foster a vibrant and active community of postgraduates from all walks of life. Here, you'll find opportunities to network with peers and university staff and attend social events. You can sign up to become a member of the Students' Union by visiting [cusu.org](https://www.cusu.org) and then you can 'opt in' to the Postgraduate Community in order to become a member. Members of the CUSU PG Community Committee can receive funding to put together events for students.

Academic support

The Lanchester Library is open 24/7, 364 days a year and is home to 1,400 study spaces, including group and silent areas. We can offer more than 550 computers and an additional 120 free-to-loan laptops. Our Academic Liaison Officers can offer specialist subject support and help you to access more than 123,000 ejournal titles, 184,000 ebooks and 317,000 print books. Quiet study is available in the Postgraduate Reading Room - a dedicated study space for postgraduates.

- Maths and stats support

Our specialist team for mathematics and statistics support, **sigma**, are based in the library. They provide free, individual tuition from the Maths and Stats Support Centre. Hour-long appointments can be booked online, which can be useful if you're collecting and analysing data for projects. Statistics tutors also run workshops and mini-courses in a variety of areas valuable to postgraduates.

- Academic writing support

The Centre for Academic Writing (CAW) offers advice on all types of postgraduate-level writing, including essays, reports, master's dissertations, doctoral theses, and writing for publication. Our new Academic Writing Studio provides dedicated space and time for writing sessions. You could also enrol in one or more of CAW's credit-bearing postgraduate modules to develop and progress your writing: 'Reviewing Research Literature', 'Crafting a Research Article', and 'Writing for Scholarly Publication'. Some of these modules are subject to availability, application and further costs.

For more information please contact:

writing.caw@coventry.ac.uk



Accommodation

We have more than 5,000 rooms in halls of residence located in and around Coventry city centre for all Coventry University students. We're investing around £80m between 2016-2019 in our new accommodation; The Cycle Works, Bishopgate and Godiva Place. We offer university-owned properties, managed and partnership properties. We have a city-centre campus, so our accommodation is located near to the action, and should make it easier to meet friends and arrive at lectures on time.

As a postgraduate student, you may find your taste in accommodation has changed since your undergraduate days. We offer accommodation specifically designed for postgraduate study. You can opt to live in a postgraduate room in a building shared with undergraduates, or live in a property which is specifically allocated for postgraduates.

You would gain the opportunity to meet and live with other postgraduate students, and there are kitchen/lounge areas for socialising. Students often form bonds with flatmates and we think it's great to have other postgrads around to talk to when you're on a postgraduate course yourself.

The halls of residence with dedicated postgraduate rooms changes yearly. Here's a summary of the three university properties which are currently just for postgraduates (at the time of going to print). Postgraduate accommodation will also be available in the near future in our newest accommodation: Bishop Gate, Godiva Place and The Cycle Works.

How to apply for accommodation

You are now able to guarantee your place in postgraduate accommodation as long as you apply for your accommodation and course by 30 June 2019 for the September 2019 intake.

Contact us:

E: unihalls@futurelets.co.uk

T: +44 (0)24 7615 8158

www.coventry.ac.uk/pgaccommodation

St Margaret Road

- Self-catered
- En-suite bedrooms
- Disabled-adapted rooms available
- 10-minute walk from University
- Garden area
- Communal cleaning
- Dedicated Residence Officer
- Contents insurance
- Gym membership
- Car parking (on street)
- Laundry facilities on-site
- High-speed Wi-Fi by Guide

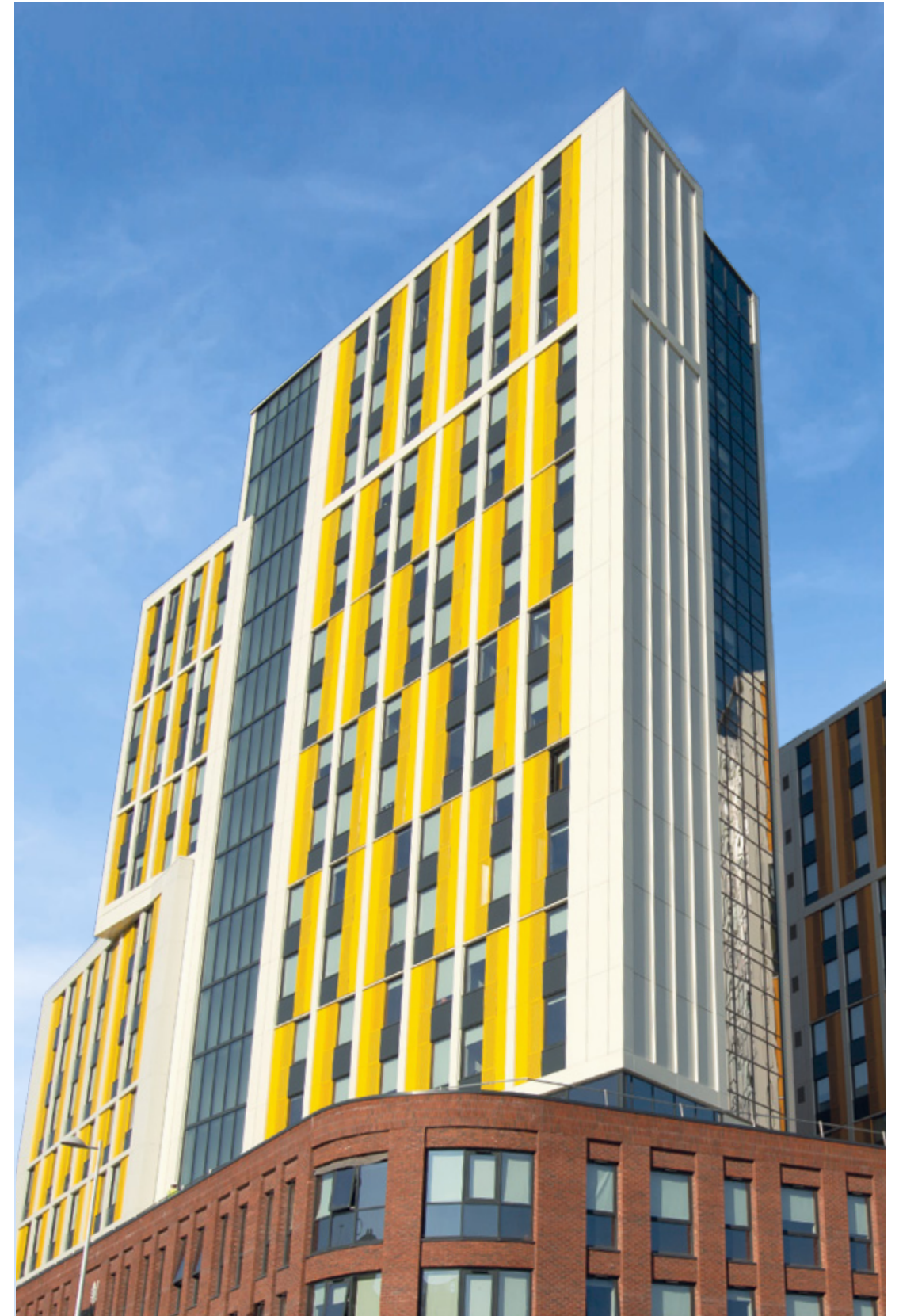
Parish Rooms

- Self-catered
- En-suite bedrooms and shared bathrooms
- Five-minute walk from University
- University managed
- Dedicated Residence Officer
- Contents insurance
- Gym membership
- High-speed Wi-Fi
- CCTV
- Communal cleaning
- Laundrette on-site

Hawkins Road

- Self-catered
- En-suite bedrooms
- 20-minute walk from University
- University managed
- Dedicated Residence Officer
- Contents insurance
- Gym membership
- High-speed Wi-Fi
- Communal cleaning
- Laundry facilities on-site
- Bike storage available
- Car parking available (additional cost)

Please note that available accommodation can change as nomination and partner agreements change yearly. Please check the website for an up-to-date position.



Bishopgate accommodation.

Coventry University postgraduate courses



Art and Design overview

When you study an Art and Design-related subject with us, you're joining a school with a long tradition of making a distinct contribution to creative industries across the UK and internationally. The University was originally established as Coventry School of Art and Design in 1843, so we have a rich heritage of teaching artists and designers in the city. As a postgraduate, you'll be encouraged to cultivate your own unique practice working from an initial concept right through to the finished product. You'll have the chance to be supported by active practitioners, researchers and writers in their respective fields. As Coventry is the UK City of Culture 2021, you could be studying in a city that's developing relationships with communities of practice nationally and internationally.

Facilities

We've a range of specialist facilities and an expert team of technicians available to support your work and creative experimentation, whatever your choice of media. Our digital design workshop features milling machines, rapid prototyping and laser cutting machines, as well as 3D printing and hand tools. Automotive designers make great use of our two clay studios. As well as exhibiting your work throughout the city, the Lanchester Gallery is our space where you can showcase work and where we welcome contemporary practitioners to exhibit and share their approaches to practice.

Links with industry and professional bodies

You may also have the opportunity to work on live projects with industry partners. Our Automotive Design course is supported by visiting industry design staff from companies such as Jaguar Land Rover, SAIC Motors and more. Visual Arts Research in the Faculty of Arts and Humanities has established collaborations with The National Gallery London, The Royal College of Art and Universities, which include York, Warwick, Loughborough and Amsterdam, and collaborations with a number of institutions in America.

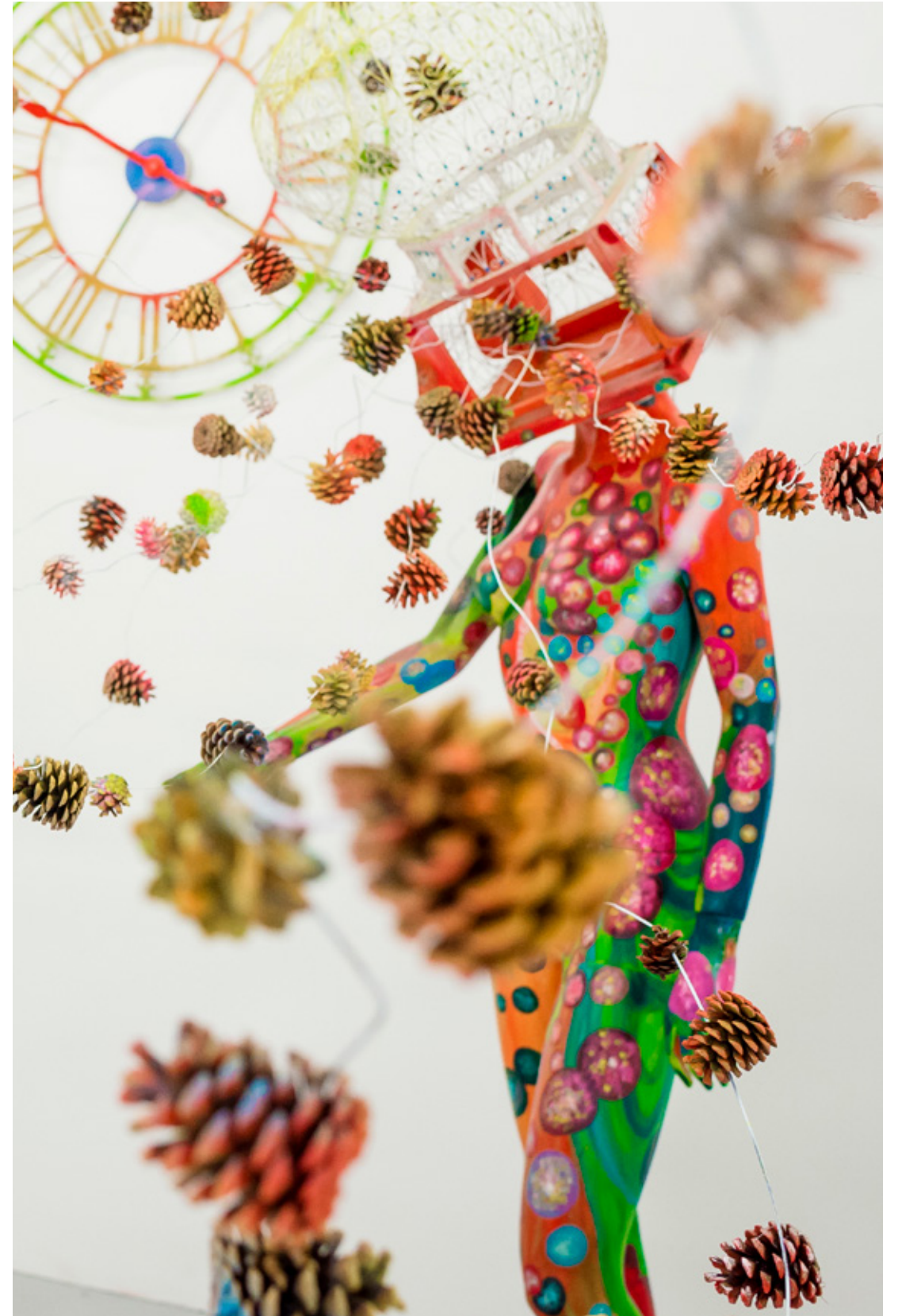
In partnership with the Chartered Management Institute (CMI) most courses incorporate a mandatory Professional Development module, giving you an additional accreditation and qualification and many other benefits.

See the website for further details.

www.coventry.ac.uk/professional-development

Employability

Our Faculty of Arts and Humanities employment support team helps with workshops, embedded learning, lectures, professional experience, mentoring and one-to-one guidance sessions. Our graduates work within the creative industries with Marvel, Aston Martin, the BBC and H&M. Many of our graduates have gone on to create their own labels and run their own studios. We offer 'enterprise' support advising students how to begin as a freelancer/entrepreneur and start a business. Our employment support gives you the opportunity to develop the confidence you'll need for a highly rewarding career.



Art and Design courses

Courses

Architecture MArch

Entry: Sept 2019/Jan 2020 - full-time
www.coventry.ac.uk/architecture-march

Automotive Design MA

Entry: Sept 2019/Jan 2020 - full-time (2 years full-time. Option for 1 year full-time, subject to agreement)
www.coventry.ac.uk/automotive-design-ma

Contemporary Arts Practice MA

Entry: Sept 2019/Jan 2020 - full-time/part-time
www.coventry.ac.uk/contemporary-arts-ma

Design and Transport MSc

Entry: Sept 2019 - full-time
www.coventry.ac.uk/design-transport-msc

Design Management MA

Entry: Sept 2019/Jan 2020/May 2020 - full-time
www.coventry.ac.uk/design-mgt-ma

Graphic Design MA

Entry: Sept 2019/Jan 2020 - full-time/part-time
www.coventry.ac.uk/graphic-design-ma

Illustration and Animation MA

Entry: Sept 2019/Jan 2020 - full-time
www.coventry.ac.uk/illustration-ma

Industrial Product Design MA

Entry: Sept 2019/Jan 2020 - full-time
www.coventry.ac.uk/industrial-design-msc

Interior Design MA

Entry: Sept 2019/Jan 2020 - full-time
www.coventry.ac.uk/interior-design-ma

Painting MA

Entry: Sept 2019/Jan 2020 - full-time/part-time
www.coventry.ac.uk/painting-ma

Entry Requirements

The minimum entry requirement for a taught master's course is the equivalent of a 2:2 undergraduate honours degree or above; please note certain courses require a 2:1 in a relevant academic discipline. Relevant experience will also be considered. Applicants whose first language is not English should have an IELTS of 6.5 overall. Pre-sessional English is available.

How to apply

International/EU students:

www.coventry.ac.uk/apply

UK students:

www.coventry.ac.uk/pgapply

Further information

Please visit our website for further course information including details on current course fees.



After a period of working, I decided to reposition my career. I wanted to redevelop my skills, refresh my knowledge and find out current trends in the industry.

Sherrie Edgar
 MA Contemporary Arts Practice

Humanities overview

The School of Humanities has an excellent reputation for applied research in education, linguistics, creative writing and international human security. Research-informed learning is thoroughly embedded in our courses and you will engage with active practitioners, writers and published academics who are experts in their field. Coventry has a strong heritage in peace and reconciliation and you can benefit from the expertise of Research Centres such as the Centre for Trust, Peace and Social Relations.

Facilities

Our facilities encourage a global outlook that can add an extra dimension to your course. The Coventry University Confucius Institute has strong links to China and the Languages Centre brings together learners, teachers and technical staff in a specially designed suite. We lead nationally and internationally on Online International Learning, MOOC (Massive Open Online Courses) integration into the curriculum and MALL (Mobile Assisted Language Learning). Students have the opportunity to engage in webinars with students from all over the world, including Europe, China and Latin America. We enrich course material with tutorials, workshops and inter/multi-cultural perspectives and offer extensive academic and English support.

Links with industry and professional bodies

Research-informed teaching is delivered by our experts on criminal mafias, security, policing, human trafficking and diplomacy, as well as by professional creative writers and leading academics in the field of linguistics. Students have the opportunity to attend workshops at the foreign affairs think tank Chatham House, the International Slavery Museum, or the United Nations Office on Drugs and Crime, participate in lectures and workshops with renowned applied linguists such as Professor David Crystal, or spend a week away on a writers' retreat, in the UK or abroad.

Our courses have a strong international dimension and can offer the opportunity to enjoy overseas field trips. In previous years, students have visited Brussels, The Hague, The Gambia, Sicily, Greece, Spain, Costa Rica and the United States. We seek to immerse students into the community of practice that we have built with our partners working in the field.

In partnership with the Chartered Management Institute (CMI) most courses incorporate a mandatory Professional Development module, giving you an additional accreditation and qualification and many other benefits.

See the website for further details.

www.coventry.ac.uk/professional-development

Employability

Our employment support team provides dedicated support and bespoke career development advice, from CV writing to psychometric testing and interviews. The interdisciplinary approach of our courses aims to provide transferable skills valued by employers. Our graduates are award-winning, gaining recognition for their work at the Model UN in New York and Mutaru Maqthar (MA Terrorism, International Crime and Global Security) won African of the Year 2017 for his work against terrorism in West Africa.



Humanities courses

Courses

Countering Organised Crime MA

Entry: Sept 2019/Jan 2020 - full-time/part-time
www.coventry.ac.uk/countering-crime-ma

Diplomacy, Law and Global Change MA

Entry: Sept 2019/Jan 2020/May 2020 - part-time
www.coventry.ac.uk/diplomacy-law-ma

English Language Teaching and Applied Linguistics MA

Entry: Sept 2019/Jan 2020/May 2020
 - full-time/part-time
www.coventry.ac.uk/elt-ma

International Policing MPA

Entry: Sept 2019/Jan 2020/May 2020 - part-time
www.coventry.ac.uk/int-policing-mpa

International Relations MA

Entry: Sept 2019/Jan 2020/May 2020
 - full-time/part-time
www.coventry.ac.uk/int-relations-ma

Professional Creative Writing MA

Entry: Jan 2020 - full-time/part-time
www.coventry.ac.uk/creative-writing-ma

Terrorism, International Crime and Global Security MA

Entry: Sept 2019/Jan 2020/May 2020
 - full-time/part-time
www.coventry.ac.uk/global-security-ma

Entry Requirements

The minimum entry requirement for a taught master's course is the equivalent of a 2:2 undergraduate honours degree or above, please note certain courses require a 2:1 in a relevant academic discipline. Relevant experience will also be considered. Applicants whose first language is not English should have an IELTS of 6.5 overall. Pre-sessional English is available.

How to apply

International/EU students:

www.coventry.ac.uk/apply

UK students:

www.coventry.ac.uk/pgapply

Further information

Please visit our website for further course information including details on current course fees.



I decided to take a master's course to pursue a better education and future and meet other students from different cultures.

Yenan Hu

MA English Language Teaching and Applied Linguistics

Media and Performing Arts overview

Join the thriving and exciting School of Media and Performing Arts at Coventry University and you'll have the opportunity to gain skills that can be taken into all kinds of careers. We encourage collaborative work across all disciplines because it develops the kind of real-life skills you'll need. You'll have opportunities to spread your wings too – our students have travelled across the globe on professional experiences and projects. We pride ourselves on being an important part of the cultural life of the city, and as Coventry is the UK City of Culture 2021 you could be studying in a city that's developing relationships with communities of practice nationally and internationally.

Facilities

We're based in the excellent Ellen Terry building, a converted 1930s Art Deco cinema that houses professional-style spaces. You can gain hands-on experience in our theatre, with professional lighting equipment and audience seating that provides an authentic atmosphere at every performance. Other facilities include music studios, video recording, music editing suites, and radio studios. Media courses have access to The Tank Studio, a state of the art live HD audio/video production studio that houses high-end broadcasting technology.

Links with industry and professional bodies

Many of our courses have strong links with industry with visiting speakers and global opportunities.

In partnership with the Chartered Management Institute (CMI) most courses incorporate a mandatory Professional Development module, giving you an additional accreditation and qualification and many other benefits. We're also in the process of developing collaborative links with institutions across the globe particularly in China and America.

Further details are available at

www.coventry.ac.uk/professional-development

Employability

As a postgraduate student within the School of Media and Performing Arts, you'll be able to focus on the continual development of a career that makes the most of your skills and passion. Our learning environment is distinguished by a strong practical focus with industry input. We aim to help you develop into a creative and independent practitioner who thrives in demanding and competitive fields. We've excellent links and close relationships with artistic employers and organisations locally, nationally and internationally. Further support for your future career is given by the Faculty of Arts and Humanities employment support team. They're at the forefront of delivering enterprise and employability skills and understand that you're looking to continue developing a career path within the creative industries. Combining the skills you learn on your course with guidance from our team will help you to confidently develop a successful career in media, journalism or theatre.



Media and Performing Arts courses

Courses

21st Century Media Practice MA

Entry: Sept 2019/Jan 2020 - full-time/part-time
www.coventry.ac.uk/21-century-ma

Automotive Journalism MA

Entry: Sept 2019/Jan 2020 - full-time/part-time
www.coventry.ac.uk/automotive-journalism-ma

Collaborative Theatre Making MA

Entry: Jan 2020 - full-time/part-time
www.coventry.ac.uk/collaborative-theatre-ma

Communication, Culture and Media MA

Entry: Sept 2019/Jan 2020/May 2020 - full-time
www.coventry.ac.uk/ccm-ma

Global Journalism and Public Relations MA

Entry: Sept 2019/Jan 2020 full-time/part-time
www.coventry.ac.uk/global-journalism-ma

Photography and Collaboration MA

Entry: Sept 2019/Jan 2020 - part-time
www.coventry.ac.uk/photography-ma

Entry Requirements

The minimum entry requirement for a taught master's course is the equivalent of a 2:2 undergraduate honours degree or above; please note certain courses require a 2:1 in a relevant academic discipline. Relevant experience will also be considered. Applicants whose first language is not English should have an IELTS of 6.5 overall. Pre-sessional English is available.

How to apply

International/EU students:

www.coventry.ac.uk/apply

UK students:

www.coventry.ac.uk/pgapply

Further information

Please visit our website for further course information including details on current course fees.



The best part about doing my master's at Coventry so far has been the exposure to people within the media industry and hearing about their experiences.

Juan Sam

MA Communication,
Culture and Media

Coventry Business School

Coventry Business School is currently rated as 'excellent' by Eduniversal, an annual ranking of business schools and universities in over 150 countries. We are also one of the largest business schools in Europe. With a recent investment of £2m in our refurbished premises, our facilities and technology are close to what you'd expect in real-world business environments, which can enable you to gain the skills and experience that you can take with you into your career. You could study in one of our three specialist schools:

- Economics, Finance and Accounting
- Marketing and Management
- Strategy and Leadership

With a 50-year heritage at the University, we mean business.

Facilities

As a postgraduate student at Coventry Business School, you'll be based in the Jaguar building, a bespoke building with spacious study and social facilities, and the William Morris building which has been recently refurbished.

Facilities you could enjoy include our state-of-the-art Trading Floor, the largest of its kind in Europe, our Business Simulation Suite, allowing for strategic problem solving in real life simulations, and for Marketing students, the DigiComm lab. All are equipped with industry relevant software and platforms, to give you experience that reflects the business world. In addition to this, Wi-Fi is available throughout the buildings, computer rooms and study hubs and the Lanchester Library is just across the road. A perfect setting for Coventry Business School students.

Employability

We offer Business Futures, a dedicated employment support team for Coventry Business School students. There are designated Employment Personal Tutors (EPT) offering one-to-one support, drop-in CV and application checks, skills development workshops, mock interviews and assessment centres, and support with psychometric testing. They also provide online resources and organise employer events that are great networking opportunities. Employability is considered with the design of every course at Coventry University and Business Futures are available to help you launch your career.

Business School

Coventry Business School hasn't gained 50 years of expertise by standing still – we pride ourselves on being innovative and bold, exploring new ways to prepare our students for their future careers. For 2019, we are offering a new suite of MBAs, with options to be taught both on campus and online, as well as a new MSc in Financial Risk Management. Our newly opened Business Simulation Suite allows for strategic problem solving in real life environments, and our focus on employability extends to our MSc in Sport Management, which can now be studied with integrated professional experience.

Links with industry and professional bodies

We are an active member of the European Foundation for Management Development (EFMD) and the Chartered Association of Business Schools (CABS), as well as being a signatory to the United Nations Principles for Responsible Management Education (UNPRME) initiative. This is further evidence that our courses can produce graduates equipped with the skills and knowledge that industry expects.



Economics, Finance and Accounting overview

The School of Economics, Finance and Accounting is a leading provider of academic and vocational courses globally. We strive to improve the quality and quantity of our courses and research, offering an enriching student experience and making a positive impact on society. As an example, we were recently recognised as among the top six universities in the UK for Economics (Guardian University Guide 2019).

Facilities

As a student of Coventry Business School, you'll have access to cutting-edge facilities, including the school's Trading Floor, the largest of its kind in Europe. The trading floor comprises 42 dual screened Bloomberg Terminals, where you could gain hands-on experience of trading stocks and shares using industry-standard tools such as Thomson Reuters Eikon and Datastream. Exposure to industry-standard technology can really strengthen your CV when applying for work post-graduation.

Links with industry and professional bodies

The school maintains professional accreditations and memberships in Accounting, Finance and Investment whilst also forging links with commercial, public sector and overseas institutional partners. This helps us keep our courses relevant to industry and to the sectors where our graduates seek employment. As members of several appropriate relevant bodies, including the European Foundation for Management Development (EFMD) and the Chartered Association of Business Schools (CABS), we offer accredited courses that are of a worldwide standard.

In partnership with the Chartered Management Institute (CMI) most courses incorporate a mandatory Professional Development module, giving you an additional accreditation and qualification and many other benefits.

See the website for further details.

www.coventry.ac.uk/professional-development

Employability

It's likely you have chosen a postgraduate qualification to develop your career. Our courses are designed with employability in mind, teaching relevant skills and knowledge that are useful beyond the classroom. In addition, our dedicated employment service, Business Futures, will offer you support with a Placement Advisor experienced in recruitment and an Employment Personal Tutor. You'll also have opportunities to gain work experience with local, national and international organisations (subject to availability and a competitive selection process). Business Futures are here to help you make a successful transition from education to the business world, and additional support is often available after you graduate too.



Economics, Finance and Accounting courses

Courses

Accounting and Financial Management MSc

Entry: Sept 2019/Jan 2020 - full-time/part-time
www.coventry.ac.uk/accounting-financial-msc

Banking and Finance MSc

Entry: Sept 2019 - full-time/part-time
www.coventry.ac.uk/banking-msc

Finance MSc

Entry: Sept 2019/May 2020 - full-time/part-time
www.coventry.ac.uk/finance-msc

Financial Risk Management MSc

Entry: Sept 2019 - full-time/part-time
www.coventry.ac.uk/financial-risk-mgt-msc

International Business Economics MSc

Entry: Sept 2019 - full-time/part-time
www.coventry.ac.uk/int-business-economics-msc

Investment Management MSc

Entry: Sept 2019 - full-time/part-time
www.coventry.ac.uk/investment-mgt-msc

Islamic Finance MSc

Entry: Sept 2019 - full-time/part-time
www.coventry.ac.uk/islamic-finance-msc

Entry Requirements

The minimum entry requirement for a taught master's course is the equivalent of a 2:2 undergraduate honours degree or above; please note certain courses require a 2:1 in a relevant academic discipline. Relevant experience will also be considered. Applicants whose first language is not English should have an IELTS of 6.5 overall. Pre-sessional English is available.

How to apply

International/EU students:

www.coventry.ac.uk/apply

UK students:

www.coventry.ac.uk/pgapply

Further information

Please visit our website for further course information including details on current course fees.

Recognitions

Chartered Insurance Institute - Recognised Prior Learning (CII) - Banking and Finance MSc, Finance MSc, Investment Management MSc.

CFA Society of the UK - Recognised significant alignment between the Investment Management Certificate (IMC) and Finance MSc, Investment Management MSc.

Affiliations

CFA Institute, University Affiliation Program member - Finance MSc, Investment Management MSc, Banking and Finance MSc, Accounting and Financial Management MSc.



Accreditations, recognitions and affiliations shall be renewed in accordance with the relevant body's standard review process and subject to the University maintaining the same high standards of course delivery.



The reason I chose to take a master's course was that it increases your professional value and often benefits you with higher pay and increased job responsibilities.

Symeon Dimitriadis
 MSc Accounting
 and Financial Management

Marketing and Management overview

The School of Marketing and Management is home to a range of courses in three broad subject areas:

- Human Resource Management (HRM)
- Advertising and Marketing and Sport
- Tourism and Event Management

The various courses in these subject areas allow you to either specialise further in a subject field or industry (e.g. Digital Marketing), change the direction of your career by choosing a broader based course or further develop your undergraduate qualification.

Our academic staff offer industry and academic expertise, teaching accredited courses recognised by industry. We are proud to have been recognised as offering one of the top four courses in the UK for Hospitality, Event Management and Tourism¹. Our courses can prepare you for the real-life demands of modern business.

Facilities

You will primarily study in two buildings – the William Morris and Jaguar buildings – which have a range of bespoke teaching rooms, study spaces and social areas. For some courses, Coventry Business School offers purpose built teaching rooms such as the DigiComm Lab, which recreates the atmosphere and experience of working for a cutting edge contemporary marketing agency. In the Lab, you will find the latest industry software, such as the Adobe Suite, which has enabled students to create a variety of exciting and dynamic advertising campaigns and digital marketing blogs.

Links with industry and professional bodies

Our courses have been designed to meet the needs of students and industry, which is reflected in our long established links with business organisations. Through a mixture of talks, visits and work placements², students have been able to put theory into practice, and experience numerous opportunities to develop their local, national and international networks. Examples of past placements, project work and visits have involved organisations such as Jaguar Land Rover, Hugo Boss, Wasps Rugby, various City governments, L'Oreal, the English Cricket Board and

the Ricoh Arena, to name but a few.

Our Marketing and Advertising courses are accredited by the Chartered Institute of Marketing (CIM), providing you with the opportunity to study for a dual award³. Visit www.cim.co.uk for further details.

The University is also a Chartered Institute of Personnel and Development (CIPD) approved centre, so if you're studying Human Resource Management, you'll have the opportunity to gain CIPD qualifications³ alongside your degree.

In partnership with the Chartered Management Institute (CMI) most courses incorporate a mandatory Professional Development module, giving you an additional accreditation and qualification and many other benefits.

See the website for further details.

www.coventry.ac.uk/professional-development

Employability

It's likely you have chosen a postgraduate qualification to develop your career. Our courses are designed with employability in mind, teaching relevant skills and knowledge that are useful beyond the classroom - for example, our new MSc Sport Management (with professional experience) allows you the opportunity to enhance your employability with a 12-month placement⁴. In addition, our dedicated employment service, Business Futures, will offer you support with a Placement Advisor experienced in recruitment and an Employment Personal Tutor. You'll also have opportunities to gain work experience and engage with field trips and projects with local, national and international organisations⁵. Previous visits have included China, UAE (Dubai), Malaysia and France (Paris). Business Futures are here to help you make a successful transition from education to the business world, and additional support is often available after you graduate too.

¹ Guardian University Guide 2019

² Subject to availability and a competitive selection process

³ Additional fees apply, subject to availability

⁴ Additional fees apply, subject to availability and a competitive selection process

⁵ Subject to availability and additional costs may apply



Marketing and Management courses

Courses

Advertising and Marketing MA

Entry: Sept 2019 - full-time/part-time

www.coventry.ac.uk/advertising-marketing-ma

Brand Management MA

Entry: Sept 2019 - full-time

www.coventry.ac.uk/brand-mgt-ma

Digital Marketing Management MA

Entry: Sept 2019 - full-time

www.coventry.ac.uk/digital-marketing-mgt-ma

Human Resource Development PgDip

Entry: Sept 2019 - part-time

www.coventry.ac.uk/hr-development-pgdip

Human Resource Management MA

Entry: Sept 2019 - full-time/part-time

www.coventry.ac.uk/hr-management-ma

Human Resource Management MA (Top-up)

Entry Sept 2019 - part time

www.coventry.ac.uk/hr-mgt-top-up-ma

Human Resource Management PgDip

Entry: Sept 2019 - part-time

www.coventry.ac.uk/hr-management-pgdip

International Events Management MSc

Entry: Sept 2019 - full-time/part-time

www.coventry.ac.uk/event-mgt-msc

International Human Resource Management MSc

Entry: Sept 2019/Jan 2020 - full-time/part-time

www.coventry.ac.uk/int-hr-msc

International Marketing Management MSc

Entry: Sept 2019/Jan 2020/May 2020

- full-time/part-time

www.coventry.ac.uk/int-marketing-mgt-msc

International Tourism Management MSc

Entry: Sept 2019 - full-time

www.coventry.ac.uk/int-tourism-msc

Sport Management MSc

Entry: Sept 2019 - full-time/part-time

(Option for professional experience)

www.coventry.ac.uk/sport-mgt-msc

Entry Requirements

The minimum entry requirement for a taught master's course is the equivalent of a 2:2 undergraduate honours degree or above, please note certain courses require a 2:1 in a relevant academic discipline. Relevant experience will also be considered. Applicants whose first language is not English should have an IELTS of 6.5 overall. Pre-sessional English is available.

How to apply

International/EU students:

www.coventry.ac.uk/apply

UK students:

www.coventry.ac.uk/pgapply

Further information

Please visit our website for further course information including details on current course fees.

Accreditations

Chartered Institute of Marketing (CIM) Graduate Gateway - Advertising and Marketing MA, Digital Marketing Management MSc and International Marketing Management MSc.

Chartered Institute of Personnel and Development (CIPD) approved centre - Human Resource Management degrees.



Accreditations shall be renewed in accordance with the relevant body's standard review process and subject to the University maintaining the same high standards of course delivery.



The lecturers that taught me went above and beyond the call of duty in their willingness to support the students. Their doors were always open to discuss on a one-to-one basis.

Josephine W. Ndirithi
MSc International Marketing

Strategy and Leadership overview

The School of Strategy and Leadership offers courses that have been developed to reflect an evolving business landscape. The school is creating the thought-leaders and decision makers of tomorrow with courses that reflect the needs and motivations of business today. With course accreditations, industry contacts and industry-standard technology, you could equip yourself with the knowledge and skills you'll need for a successful career.

Facilities

As part of Coventry Business School, you could learn in our Business Simulation Suite, giving you the chance to engage in real life simulations that will provide useful experiences for helping to launch your career. Gain knowledge and skills by honing your pitches in the Boardroom Simulator, or by tackling challenges using strategic decision making in the Strategy Lab - learning skills and gaining experience to take into the real world of business.

Links with industry and professional bodies

We are members of several relevant bodies, which is evidence that our courses meet the standards employers expect. This includes membership to the European Foundation for Management Development (EFMD) and the Chartered Association of Business Schools (CABS), as well as being a signatory to the United Nations Principles for Responsible Management Education (UNPRME) initiative. Some of our courses are also accredited by the Association for Project Management (APM).

In partnership with the Chartered Management Institute (CMI) most courses incorporate a mandatory Professional Development module, giving you an additional accreditation and qualification and many other benefits.

See the website for further details.

www.coventry.ac.uk/professional-development

Employability

It's likely you have chosen a postgraduate qualification to develop your career. Our courses are designed with employability in mind, teaching relevant skills and knowledge that are useful beyond the classroom. In addition, our dedicated employment service, Business Futures, will offer you support with a Placement Advisor experienced in recruitment and an Employment Personal Tutor. You'll also have opportunities to gain work experience with local and national organisations (subject to availability and a competitive selection process). Business Futures are here to help you make a successful transition from education to the business world, and additional support is often available after you graduate too.



Strategy and Leadership courses

Courses

Business Analytics MSc

Entry: Sept 2019 - full-time/part-time
www.coventry.ac.uk/business-analytics-msc

Cyber Security Management MSc

Entry: Sept 2019 - full-time/part-time
www.coventry.ac.uk/cyber-security-mgt-msc

Enterprise and Entrepreneurship Education MA

Entry: Sept 2019 - part-time
www.coventry.ac.uk/enterprise-ma

Global Entrepreneurship MA

Entry: Sept 2019 - full-time
www.coventry.ac.uk/global-entrepreneur-ma

International Business MSc

Entry: Sept 2019/Jan 2020 - full-time
www.coventry.ac.uk/int-business-msc

International Business Logistics MSc

Entry: Sept 2019 - full-time/part-time
www.coventry.ac.uk/int-logistics-msc

International Business Management MSc

Entry: Sept 2019/Jan 2020/May 2020
 - full-time/part-time
www.coventry.ac.uk/int-business-mgt-msc

Leadership and Management MA

Entry: Sept 2019 - part-time
www.coventry.ac.uk/leadership-ma

Project Management MSc

Entry: Sept 2019/Jan 2020 - full-time/part-time
www.coventry.ac.uk/project-mgt-msc

MBA Courses

MBA

Entry: Sept 2019/Jan 2020 - full-time
www.coventry.ac.uk/coventry-mba

MBA (for the Health Care Sector)

Entry: Sept 2019 - full-time
www.coventry.ac.uk/coventry-mba

MBA (with Artificial Intelligence specialism)

Entry: Sept 2019 - full-time
www.coventry.ac.uk/coventry-mba

As part of the Coventry University Group, Coventry University Online offer a range of MBA's please see **page 116**.

Entry Requirements

The minimum entry requirement for a taught master's course is the equivalent of a 2:2 undergraduate honours degree or above, please note certain courses require a 2:1 in a relevant academic discipline. Relevant experience will also be considered.

MBA Applicants should hold an honours degree of any discipline, or hold an equivalent qualification in a business-related area. Applicants must also have a minimum of 2 years professional experience.

Applicants for all courses whose first language is not English should have an IELTS of 6.5 overall. Pre-sessional English is available.

How to apply

International/EU students: www.coventry.ac.uk/apply
 UK students: www.coventry.ac.uk/pgapply

Further information

Please visit our website for further course information including details on current course fees.

Accreditations

Association for Project Management (APM) - Project Management MSc. Chartered Institute of Procurement and Supply (CIPS) and The Chartered Institute of Logistics and Transport (CILT) - International Business Logistics MSc.



Accreditations shall be renewed in accordance with the relevant body's standard review process and subject to the University maintaining the same high standards of course delivery.



I decided to take a master's to enhance my employability prospects. Coventry University was my first choice.

Sijin Cherijan
 MSc International
 Business Management

Coventry Law School

We have been teaching Law at Coventry for more than 50 years and pride ourselves in providing friendly, accessible staff that will support you through your studies. Coventry Law School offers a range of LLM courses including the global-reaching International Law LLM and International Business Law LLM. You could find yourself learning about the latest developments in topics like business, human rights and corporate crime. Our courses are designed to develop your legal knowledge and help you to specialise in your chosen field. Our postgraduate courses aim to provide in-depth, relevant content enabling you to acquire the specialist knowledge and research skills you'll need to embark on a legal career.

Facilities

Our mock courtroom, or 'Moot Room', is located centrally on campus, where you can practice advocacy skills in a realistic environment. As a law student, you may have teaching sessions in the Moot Room, and the opportunity to get involved with our annual Mooting competition. Our gowns and wigs will help you to get into the role of an advocate.

Wi-Fi is available throughout the buildings, computer rooms and study hubs and our Lanchester Library is nearby too.

Links with industry and professional bodies

You are encouraged to put your studies into practice through our own Legal Clinic, working with qualified solicitors offering legal services and advice to the community. It's an excellent way to develop the practical skills such as advocacy, interviewing and negotiation that employers look for.

In partnership with the Chartered Management Institute (CMI) most courses incorporate a mandatory Professional Development module, giving you an additional accreditation and qualification and many other benefits.

See the website for further details.

www.coventry.ac.uk/professional-development

Employability

We strive to help you enter the job market with the kind of skills employers look for. Legal Futures, our dedicated employment team, offers support to all students and recent graduates within the Law School with a Placement Advisor with experience of recruitment and an Employment Personal Tutor.

You'll have opportunities to gain work experience with local and national law firms, local advice centres and charities, as well as within local authority and education networks. All work placements are subject to availability and a competitive selection process. There is also the chance to volunteer in our Legal Clinic, Business, Law and Enterprise Clinic or Employment Law Clinic, and handle real cases for clients. Here, you'll be supervised by experienced staff and gain experience that could give you a competitive edge with employers or even inspire an international career.



Law courses

Courses

International Business Law LLM

Entry: Sept 2019/Jan 2020 - full-time/part-time
www.coventry.ac.uk/int-business-law-llm

International Law LLM

Entry: Sept 2019 - full-time/part-time
www.coventry.ac.uk/int-law-llm

Law LLM

Entry: Sept 2019/ /May 2020 - full-time/part-time
www.coventry.ac.uk/law-llm

Oil, Gas and Energy Law LLM

Entry: Sept 2019 - full-time/part-time
www.coventry.ac.uk/oil-gas-energy-llm

Entry Requirements

The minimum entry requirement for a taught master's course is the equivalent of a 2:2 undergraduate honours degree or above, please note certain courses require a 2:1 in a relevant academic discipline. Relevant experience will also be considered. Applicants whose first language is not English should have an IELTS of 6.5 overall. Pre-sessional English is available.

How to apply

International/EU students:

www.coventry.ac.uk/apply

UK students:

www.coventry.ac.uk/pgapply

Further information

Please visit our website for further course information including details on current course fees.



I've travelled a lot, met new people and made lots of friends from different cultures – which makes university life more enjoyable.

Mahnoor Sultan
LLM Law

Computing, Electronics and Mathematics overview

The School of Computing, Electronics and Mathematics contributes to world-class research in our Fluid and Complex Systems Research Centre. All of this feeds into our teaching, providing students with an opportunity to work on cutting-edge problems. We'll help you to develop a strong practical insight into your chosen subject as well as a solid theoretical foundation. We achieve this through an activity-led learning approach, where academic knowledge is cemented by practical real-world examples you can explore on your own and in groups.

Our postgraduate courses include a range of traditional courses such as Computer Science, Management Information Systems, and Electrical and Electronic Engineering, but also includes more specialised areas such as Data Science, Electrical Automotive Engineering and Cyber Security.

Facilities

Our world-leading facilities include a CISCO laboratory with certified support staff and a bespoke "Ethical Hacking" lab which features everything you'll need to learn the skills of security analysis and penetration testing, with 36 stations, racks of hardware and plenty of space. As well as specialist labs for electronics and electrical power, there is also the CU-ADAM lab with drive-in vehicle digitising, full-size projection and modelling space and specialist equipment such as 2D and 3D scanners, digital cameras and data projectors with stereo capability. Finally, an award-winning mathematics and statistics support service is provided by the **sigma** team in the Mathematics Support Centre.

Links with industry and professional bodies

Many of our postgraduate courses are accredited by the Institution of Engineering and Technology and the British Computing Society.

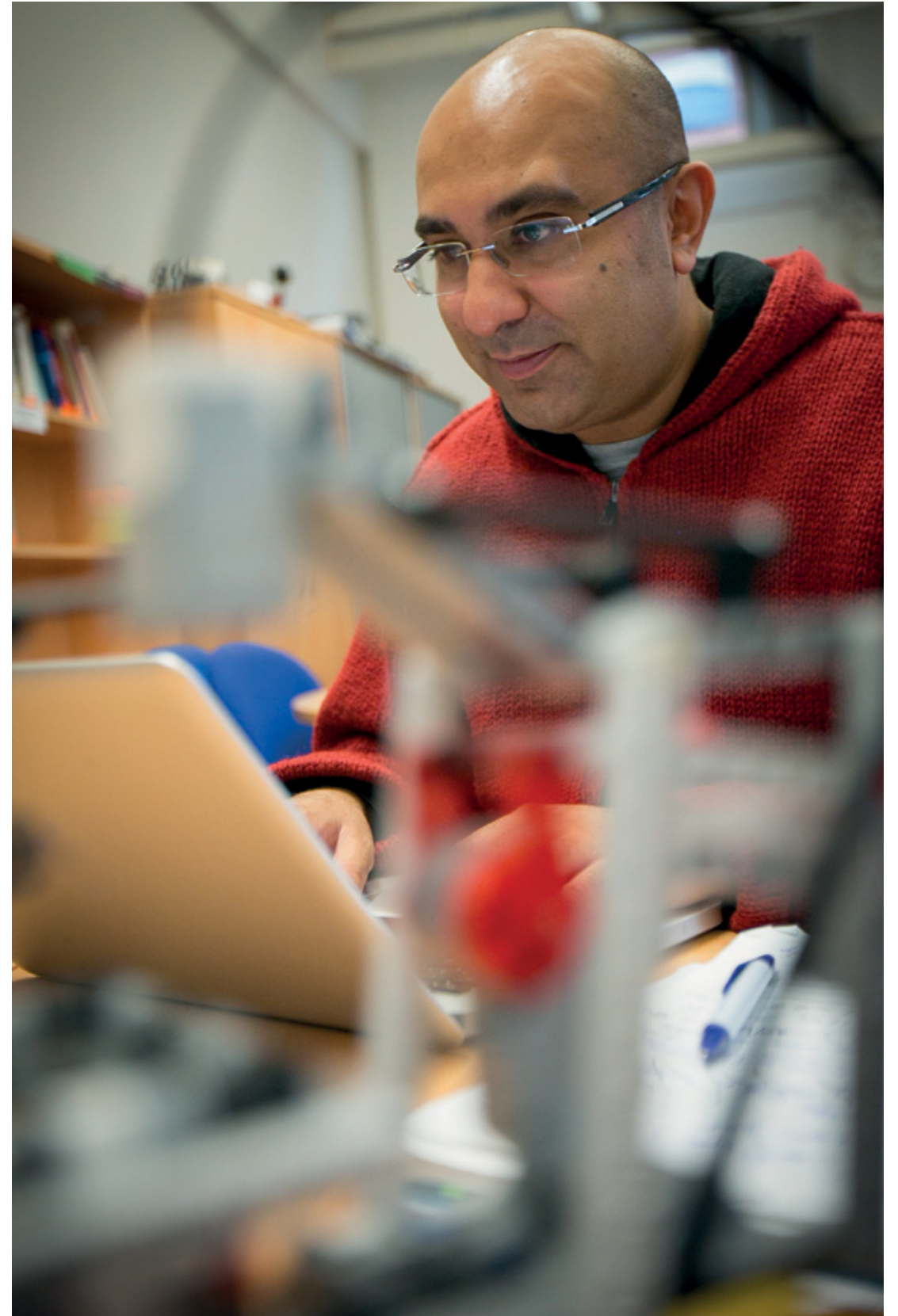
In partnership with the Chartered Management Institute (CMI) most courses incorporate a mandatory Professional Development module, giving you an additional accreditation and qualification and many other benefits.

See the website for further details.

www.coventry.ac.uk/professional-development

Employability

You will be provided with a comprehensive package of career support from our award-winning EEC Futures team. The team works very closely with academics to embed employability into the curriculum. EEC Futures also works closely with key industrial partners, such as TATA Technologies, GE Aviation and Intel and offers a wide range of employer initiatives to help you secure the right graduate role.



Computing, Electronics and Mathematics courses

Courses

Computer Science MSc

Entry: Sept 2019/Jan 2020 - full-time

www.coventry.ac.uk/computer-science-msc

Cyber Security MSc

Entry: Sept 2019 - full-time/part-time

www.coventry.ac.uk/cyber-security-msc

Data Science and Computational Intelligence MSc

Entry: Sept 2019 - full-time

www.coventry.ac.uk/data-science-msc

Electrical Automotive Engineering MSc

Entry Sept 2019 - full-time/part-time

www.coventry.ac.uk/electrical-auto-eng-msc

Electrical and Electronic Engineering MSc

Entry: Sept 2019/Jan 2020 - full-time/part-time

www.coventry.ac.uk/electrical-msc

Embedded Microelectronics and Wireless Systems MSc

Entry: Sept 2019/Jan 2020 - full-time/part-time

www.coventry.ac.uk/microelectronics-msc

Information Technology MSc

Entry: Sept 2019 - full-time/part-time

www.coventry.ac.uk/it-msc

Management Information Systems MSc

Entry: Sept 2019 - full-time

www.coventry.ac.uk/mgt-info-sys-msc

Management of Information Technology MSc

Entry: Sept 2019 - full-time

www.coventry.ac.uk/mgt-it-msc

Software Development MSc

Entry: Sept 2018 - full-time

www.coventry.ac.uk/software-development-msc

Entry Requirements

The minimum entry requirement for a taught master's course is the equivalent of a 2:2 undergraduate honours degree or above, please note certain courses require a 2:1 in a relevant academic discipline. Relevant experience will also be considered for some courses. Applicants whose first language is not English should have an IELTS of 6.5 overall. Pre-sessional English is available. Please check individual course pages on the website for course specific entry criteria.

How to apply

International/EU students:

www.coventry.ac.uk/apply

UK students:

www.coventry.ac.uk/pgapply

Further information

Please visit our website for further course information including details on current course fees.

Accreditations

The British Computer Society (BCS) - Computer Science MSc, Information Technology MSc, and Software Development MSc.

Institution of Engineering and Technology (IET) - Electrical and Electronic Engineering MSc.



Accreditations shall be renewed in accordance with the relevant body's standard review process and subject to the University maintaining the same high standards of course delivery.



The high standard of Coventry University and the commitment of staff along with my hard work and dedication helped me land a position at Jaguar Land Rover.

Dilu Liju
MSc Electrical and Electronic Engineering

Energy, Construction and Environment overview

The School of Energy, Construction and Environment brings together the disciplines affecting the natural and built environment. Courses within the school focus on disciplines that lead to employability within civil engineering, building, geography and environment, disaster management and humanitarian engineering, and oil, gas and energy, and our courses benefit from the synergy between the different subject areas. As a testament to the quality of our teaching within the Geography and Environmental Studies area, we were recently recognised amongst the top 7 in the UK in the Guardian University Guide 2019.

Facilities

Laboratory work is a core aspect of our courses and you'll have the chance to develop a range of practical skills. For example, Civil Engineering and Building workshops could see you using hydraulics, building structures or testing tension in building materials. You'll have opportunities to join a wide range of UK and international field trips, so that you can learn 'in the field' and replicate industry practice. Some field trips are subject to availability, application and additional fees. You will also have access to the UK's only Simulation Centre, which uses immersive technology to recreate environments with a 120° curved, 10-metre projection screen and 30-square-metre activity space. The Simulation Centre also features an observation deck and activity hubs, with audio and video recording capabilities enabling replays and feedback. It's an incredible space where you can practice techniques and responses to realistic scenarios.

Links with industry and professional bodies

Relevant professional bodies accredit all our courses, including the Energy Institute, the Institute of Civil Engineers, the Institution of Structural Engineers, the Chartered Institute of Architectural Technologists, the Royal Institution of Chartered Surveyors, the Chartered Institute of Building, the Chartered Institute of Building Services Engineers and the Royal Geographical Society. This means that our courses offer the standard of teaching that employers expect and will help you to gain the skills you'll need for a successful career in your chosen discipline.

We also have extensive industry links, including the Asia Disaster Preparedness Centre, Oxfam, Lloyds Register, Foreign and Commonwealth Office, Environment Agency, Forestry Commission, Severn Trent Water, Atkins and many more.

In partnership with the Chartered Management Institute (CMI) most courses incorporate a mandatory Professional Development module, giving you an additional accreditation and qualification and many other benefits.

See the website for further details.

www.coventry.ac.uk/professional-development

Employability

As a student within the school, you will have the opportunity to access a comprehensive package of career support from our award-winning EEC Futures team. The team works very closely with academics to embed employability into the curriculum. EEC Futures also works closely with key industrial partners and offers a careers fair that attracts a wide range of employers.



Energy, Construction and Environment courses

Courses

Agroecology, Water and Food Sovereignty MSc

Entry: Sept 2019/Jan 2020 - full-time/part-time
www.coventry.ac.uk/food-sovereignty-msc

Civil Engineering MSc

Entry: Sept 2019/Jan 2020/May 2020 - full-time/part-time
www.coventry.ac.uk/civil-eng-msc

Civil Engineering (Technical Route) MSc

Entry: Sept 2019/Jan 2020/May 2020
 - full-time/part-time
www.coventry.ac.uk/civil-eng-tech-msc

Construction Management with BIM MSc

Entry: Sept 2019/Jan 2020 - full-time/part-time
www.coventry.ac.uk/construction-mgt-msc

Construction Project and Cost Management MSc

Entry: Sept 2019/Jan 2020/May 2020 - full-time/part-time
www.coventry.ac.uk/cost-project-msc

Crowded Places and Public Safety Management MSc

Entry: Sept 2019/Jan 2020/May 2020 - full-time/part-time
www.coventry.ac.uk/crowded-places-msc

Disaster Management and Resilience MSc

Entry: Sept 2019/Jan 2020/May 2020 - full-time/part-time
www.coventry.ac.uk/disaster-mgt-msc

Emergency Management and Resilience MSc

Entry: Sept 2019/Jan 2020/May 2020 - full-time/part-time
www.coventry.ac.uk/emergency-mgt-msc

Highways and Transportation Engineering MSc

Entry: Sept 2019/Jan 2020/May 2020
 - full-time/part-time
www.coventry.ac.uk/highways-eng-msc

Oil and Gas Engineering MSc

Entry: Sept 2019/Jan 2020/May 2020 - full-time/part-time
www.coventry.ac.uk/oil-gas-eng-msc

Oil and Gas Management MSc

Entry: Sept 2019/Jan 2020/May 2020 - full-time
www.coventry.ac.uk/oil-gas-mgt-msc

Petroleum and Environmental Technology MSc

Entry: Sept 2019/Jan 2020/May 2020 - full-time/part-time
www.coventry.ac.uk/petroleum-msc

Structural Engineering MSc

Entry: Sept 2019/Jan 2020/May 2020
 - full-time/part-time
www.coventry.ac.uk/structural-eng-msc

Sustainability and Environmental Management MSc

Entry: Sept 2019/Jan 2020 - full-time/part-time
www.coventry.ac.uk/sustainability-msc

Entry Requirements

The minimum entry requirement for a taught master's course is the equivalent of a 2:2 undergraduate honours degree or above, please note certain courses require a 2:1 in a relevant academic discipline. Relevant experience will also be considered for some courses. Applicants whose first language is not English should have an IELTS of 6.5 overall. Pre-sessional English is available. Please check individual course pages on the website for course specific entry criteria.

How to apply

International/EU students: www.coventry.ac.uk/apply
 UK students: www.coventry.ac.uk/pgapply

Further information

Please visit our website for further course information including details on current course fees.

Accreditations

Royal Institution of Chartered Surveyors (RICS) - Construction and Cost Management MSc.
 Chartered Institute of Building (CIOB) - Construction Project and Cost Management MSc and Construction Management with BIM MSc. Institution of Structural Engineers; Institute of Highway Engineers and The Chartered Institution of Highways and Transportation - Civil Engineering MSc, Civil and Structural Engineering MSc.
 Energy Institute (EI) - Oil and Gas Management MSc, Oil & Gas Engineering MSc and Petroleum and Environmental Technology MSc. Institute of Civil Engineers (ICE) - Civil Engineering MSc, Civil Engineering (Technical Route) MSc, and Civil and Structural Engineering MSc.



Accreditations shall be renewed in accordance with the relevant body's standard review process and subject to the University maintaining the same high standards of course delivery.



I believe having an MSc from the UK will open more paths in my career and give me confidence in my future career.

Igor Marynowski
 MSc Civil and Structural Engineering

Mechanical, Aerospace and Automotive Engineering overview

The School of Mechanical, Aerospace and Automotive Engineering delivers an extensive Masters Degree portfolio of engineering and specialised business programmes, including Automotive Engineering, Global Logistics, Engineering Business Management and Air Transport Management.

The school commands a global reputation for teaching, student experience and research. Delivering expert education informed by world class research empowers our graduates as future global engineering and management professionals. We are home to the UK's first 'Faculty on the Factory Floor', the £32m Institute for Advanced Manufacturing and Engineering (AME) based at the Unipart Powertrain Applications company site in Coventry.

Current examples of research expertise include Kinetic Energy Recovery Systems (KERS), Hybrid Powertrain, Autonomous Vehicle and Drone Technology, Human Factors in Aviation and Multi-Phase flow for Oil and Gas extraction. We are immensely proud that The Guardian University Guide 2019 league table ranks Coventry University as 7th in the UK for Mechanical Engineering.

Facilities

Students of the school have access to outstanding laboratory facilities within our £50m state-of-the-art Engineering and Computing building. Our innovative Activity-Led Learning approach is globally recognised, allowing you to gain hands-on experience with specialist equipment and facilities which include our Mercedes Petronas AMG wind tunnel, Computer Numerical Control (CNC) manufacturing facility incorporating a 3D-printing suite, an industry standard engine test cell, our inspirational Harrier jump jet and aircraft simulation suite, automotive simulation suite which houses industry standard equipment such as our latest investment a Cruden F1 Vehicle simulator alongside a wide range of traditional, experimental and manufacturing equipment.

Links with industry and professional bodies

Delivering industrially and commercially relevant courses positively impacts your graduate employability, and we embed this within our course design.

Many of our courses are accredited by professional bodies such as the Institution of Engineering (IET) and the internationally renowned Royal Aeronautical Society (RAES) to name a few.

In partnership with the Chartered Management Institute (CMI) most courses incorporate a mandatory Professional Development module, giving you an additional accreditation and qualification and many other benefits.

See the website for further details.

www.coventry.ac.uk/professional-development

Employability

We are strongly focused on preparing our students for their first professional graduate roles and subsequent careers. You will have the opportunity to access a comprehensive package of career support from our award-winning EEC Futures team. Our students and graduates may have the opportunity to benefit significantly from our industrial and strategic partnerships with companies such as Emirates, Jaguar Land Rover, Airbus, Rolls Royce, Unipart and Birmingham International Airport.



Mechanical, Aerospace and Automotive Engineering courses

Courses

Aerospace Engineering MSc

Entry: Sept 2019 - full-time/part-time
www.coventry.ac.uk/aerospace-msc

Air Transport Management MSc

Entry: Sept 2019 - full-time/part-time
www.coventry.ac.uk/air-transport-msc

Automotive Engineering MSc

Entry: Sept 2019/Jan 2020 - full-time/part-time
www.coventry.ac.uk/automotive-eng-msc

Control Engineering MSc

Entry: Sept 2020 - full-time/part-time
www.coventry.ac.uk/control-eng-msc

Digital Technology for Engineering MSc

Entry: Sept 2019 - full-time
www.coventry.ac.uk/digital-tech-eng-msc

Engineering and Management MSc

Entry: Sept 2019/Jan 2020 - full-time/part-time
www.coventry.ac.uk/eng-mgt-msc

Engineering Business Management MSc

Entry: Sept 2019/Jan 2020/May 2020
 - full-time/part-time
www.coventry.ac.uk/eng-business-msc

Engineering Project Management MSc

Entry: Sept 2019/Jan 2020/May 2020 - full-time
www.coventry.ac.uk/eng-project-msc

Global Logistics Management MSc

Entry: Sept 2019/Jan 2020 - full-time/part-time
www.coventry.ac.uk/global-logistics-msc

Human Factors in Aviation MSc

Entry: Sept 2019 - part-time
www.coventry.ac.uk/human-factors-msc

Mechanical Engineering MSc

Entry: Sept 2019/Jan 2020 - full-time/part-time
www.coventry.ac.uk/mechanical-eng-msc

Production Engineering and Operations Management MSc

Entry: Sept 2019 - full-time
www.coventry.ac.uk/production-eng-msc

Renewable Energy Engineering MSc

Entry: Sept 2019 - full-time
www.coventry.ac.uk/renewable-energy-msc

Supply Chain Management MSc

Entry: Sept 2019/Jan 2020/May 2020
 - full-time/part-time
www.coventry.ac.uk/supply-chain-mgt-msc

Systems and Control MSc

Entry: Sept 2019 - full-time/part-time
www.coventry.ac.uk/sys-control-msc

Entry Requirements

The minimum entry requirement for a taught master's course is the equivalent of a 2:2 undergraduate honours degree or above, please note certain courses require a 2:1 in a relevant academic discipline. Relevant experience will also be considered for some courses. Applicants whose first language is not English should have an IELTS of 6.5 overall. Pre-session English is available. Please check individual course pages on the website for course specific entry criteria.

How to apply

International/EU students:

www.coventry.ac.uk/apply

UK students:

www.coventry.ac.uk/pgapply

Further information

Please visit our website for further course information including details on current course fees.

Accreditations

Institution of Engineering and Technology (IET) – Control Engineering MSc and Systems and Control MSc. Chartered Institute of Logistics and Transport (CILT) – Supply Chain Management MSc, Global Logistics Management MSc and Air Transport Management MSc. Chartered Institute of Procurement and Supply (CIPS) – Supply Chain Management MSc. Association of Project Management (APM) – Engineering Project Management MSc. Royal Aeronautical Society (RAeS) – Aerospace Engineering MSc



Accreditations shall be renewed in accordance with the relevant body's standard review process and subject to the University maintaining the same high standards of course delivery.



The knowledge that my course had to offer along with the experiences with people and different situations, definitely made me a stronger individual.

Adrin Travasso
 MSc Production Engineering and Operations Management

Life Sciences overview

The School of Life Sciences offers courses such as Biomedical Science, Sport and Exercise Science and Biotechnology. Our life sciences courses are inspired by research and our Faculty Research Centre scored a REF2014 score in which the majority of our research was judged to be world-leading or internationally excellent.

We share a passion for understanding the biology of human health and disease, the chemical composition of materials and exploring how forensic evidence impacts on legal cases. We also examine the way the human body functions during sport and physical activity, the prevention and treatment of injuries, food science, and nutrition and diet-related health issues.

Facilities

Our new state-of-the-art multi-million-pound Alison Gingell Building was opened in January 2018. It is home to an extensive range of laboratory facilities where you can practice skills in microbiology, cell culture, molecular biology, genetics, biochemistry and forensic science. We also work with the latest sport and exercise science and sports therapy equipment, as well as an environmental chamber that can measure athletic performance. Our super lab, Lab+ is capable of accommodating up to 270 students and is one of the largest educational laboratory providers in the UK.

Links with industry and professional bodies

Our team has close relationships with employers like the National Health Service (NHS), Nemaaura Pharmaceuticals Ltd and the food industry. We also work closely with professional sports teams and athletes across the West Midlands, including Wasps and West Bromwich Albion Football Club. Many of our staff have extensive professional experience and are members of the Institute of Biomedical Science (IBMS), the Health and Care Professions Council (HCPC), UK Strength and Conditioning Association (UKSCA) and British Association of Sport and Exercise Sciences (BASES).

If you are interested in further study after a master's, our research Centre for Sport, Exercise and Life Sciences (SELS) has been awarded Royal Society of Biology accreditation for doctoral training. We are currently the only university in the country to hold this accolade.

In partnership with the Chartered Management Institute (CMI) most courses incorporate a mandatory Professional Development module, giving you an additional accreditation and qualification and many other benefits.

See the website for further details.

www.coventry.ac.uk/professional-development

Employability

Our courses provide real-life experience through industry engagement, professional experience options*, 'live' projects, actual case studies and simulation. Work placements are a great way to gain practical experience that employers look for. Previous students have taken part in work placements coaching in schools or for sports teams, working in NHS Biomedical Science testing laboratories and helping research projects in smoking cessation. Our specialist employment advisors can help you to find professional placements and internships in the UK or abroad, as well as support your transition from education into employment. Work placements are subject to fees, availability and application processes. We can also provide support with any applications should they be required.

*All students on courses with 'professional experience' will undertake professional experience, which may be based within the University or as a paid or unpaid internship with an external organisation. As such internships are subject to a competitive application and selection process, the University cannot therefore guarantee that all students will be able to carry out an internship. Professional experience can also include simulation or problem-based learning designed to deliver similar learning outcomes.



Life Sciences courses

Courses

Applied Sport and Exercise Science MSc

Entry: Sept 2019 - full-time/part-time
www.coventry.ac.uk/applied-sport-msc

Biomedical Science MSc

Entry: Sept 2019/May 2020 - full-time/part-time
 (Option for professional experience)
www.coventry.ac.uk/biomedical-science-msc

Biotechnology MSc

Entry: Sept 2019/Jan 2020 - full-time/part-time
 (Option for professional experience)
www.coventry.ac.uk/biotech-msc

Molecular Biology MSc

Entry: Sept 2019/Jan 2020 - full-time/part-time
 (Option for professional experience)
www.coventry.ac.uk/molecular-biology-msc

Pharmacology and Drug Discovery MSc

Entry: Sept 2019/Jan 2020 - full-time/part-time
 (Option for professional experience)
www.coventry.ac.uk/pharmacology-msc

Science of Youth Coaching and Development MSc

Entry: Sept 2019 - full-time
www.coventry.ac.uk/science-youth-msc

Strength and Conditioning MSc

Entry: Sept 2019/May 2020 - full-time/part-time
www.coventry.ac.uk/strength-conditioning-msc

Sports and Exercise Nutrition MSc

Entry: Sept 2019 - full-time/part-time
www.coventry.ac.uk/sports-nutrition-msc

Entry Requirements

The minimum entry requirement for a taught master's course is the equivalent of a 2:2 undergraduate honours degree or above, please note certain courses require a 2:1 in a relevant academic discipline. Relevant experience will also be considered. Applicants whose first language is not English should have an IELTS of 6.5 overall. Pre-sessional English is available.

How to apply

International/EU students:

www.coventry.ac.uk/apply

UK students:

www.coventry.ac.uk/pgapply

Further information

Please visit our website for further course information including details on current course fees.

Accreditations

Institute of Biomedical Science - The Biomedical Science MSc.



Accreditations shall be renewed in accordance with the relevant body's standard review process and subject to the University maintaining the same high standards of course delivery.



Choosing a master's with professional experience was the best decision. I gained new skills in a laboratory environment as well as in a desk-based role within the pharmaceutical industry.

Victoria Korzhova
 MSc Pharmacology
 and Drug Discovery

Nursing, Midwifery and Health overview

The School of Nursing, Midwifery and Health is one of the largest schools in the University and delivers postgraduate and doctoral courses in healthcare practice, leadership and management. All of our courses are underpinned by research and evidence-based practice and we have several Research Centres that we work in association with, including the Centre for Sport, Exercise and Life Sciences (CELS), the Centre for Advances in Behavioural Science (CABS) and the Centre for Innovative Research Across the Life Course (CIRAL).

We are also practice-led and our staff are committed to providing you with a learning environment that supports you on a journey of life-changing learning and exploration. As an example of the quality of our teaching, we were recently recognised as a top 7 university in the UK for nursing and midwifery in the Guardian University Guide 2019.

Facilities

Our new state-of-the-art multi-million-pound Alison Gingell Building was opened in January 2018. Here, we use people and technology to replicate real-life situations allowing you to problem solve and build self-confidence as an advanced healthcare practitioner. Our fully-equipped ambulance, scrub area, hospital wards and adapted community houses feature assistive technology, allowing students to experience the full patient pathway; from paramedic assessment, to hospital treatment through to rehabilitation.

Links with industry and professional bodies

We work in partnership with professional bodies, employers and the health and social care sector. We are well connected, locally, regionally, nationally and internationally so that we can provide you with the best possible opportunities. All of this is designed to ensure you graduate with the professional expertise and recognition you'll need to work in healthcare professions.

In partnership with the Chartered Management Institute (CMI) most courses incorporate a mandatory Professional Development module, giving you an additional accreditation and qualification and many other benefits.

See the website for further details.

www.coventry.ac.uk/professional-development

Employability

A master's qualification can improve your prospects of promotion to a more fulfilling role and a higher band of salary. The average postgraduate leavers' salary in this school is £32,386 (DHLE, 2016). Many of our postgraduate courses give you the opportunity to engage in professional practice to develop the attributes, practical skills and knowledge sought by employers. We deliver an extensive portfolio of continuing professional development, postgraduate and post-qualifying courses and undertake consultancy. In this way, many of our students continue their relationship with us beyond their initial course. Our aim is to prepare you for a successful career with the skills and confidence to meet the needs of a 21st century health and social care service.



Nursing, Midwifery and Health courses

Courses

Advanced Clinical Practice MSc

Entry: Sept 2019 - full-time/part-time
www.coventry.ac.uk/clinical-practice-msc

Advanced Practice in Occupational Therapy MSc

Entry: Sept 2019 - full-time/part-time
www.coventry.ac.uk/advanced-occupational-therapy-msc

Advancing Physiotherapy Practice MSc

Entry: Sept 2019 - full-time/part-time
www.coventry.ac.uk/advancing-physio-msc

Global Health Care Management MSc

Entry: Sept 2019/Jan 2020/May 2020 - full-time
www.coventry.ac.uk/global-healthcare-msc

Manual Therapy MSc

Entry: Sept 2019 - full-time/part-time
www.coventry.ac.uk/manual-therapy-msc

Nursing Studies MSc

Entry: Sept 2019/Jan 2020 - full-time/part-time
www.coventry.ac.uk/nursing-studies-msc

Public Health Nutrition MSc

Entry: Sept 2019/Jan 2020 - full-time/part-time
www.coventry.ac.uk/health-nutrition-msc

Social and Therapeutic Horticulture MSc

Entry: Sept 2019 - full-time/part-time
www.coventry.ac.uk/therapeutic-horticulture-msc

Teenage and Young Adult Cancer Care PgCert (Online):

Entry: Sept 2019 - full-time/part-time
www.coventry.ac.uk/teenage-cancer-care-pgcert

MBA Course

MBA (for the Health Care Sector)

Entry: Sept 2019- full-time
www.coventry.ac.uk/coventry-mba

Entry Requirements

The minimum entry requirement for a taught master's course is the equivalent of a 2:2 undergraduate honours degree or above; please note certain courses require a 2:1 in a relevant academic discipline. Relevant experience will also be considered. Applicants whose first language is not English should have an IELTS of 6.5 overall. Pre-sessional English is available.

How to apply

International/EU students:

www.coventry.ac.uk/apply

UK students:

www.coventry.ac.uk/pgapply

Further information

Please visit our website for further course information including details on current course fees.

Accreditations

Musculoskeletal Association of Chartered Physiotherapy (MACP) - Manual Therapy MSc.



Accreditations shall be renewed in accordance with the relevant body's standard review process and subject to the University maintaining the same high standards of course delivery.



I learned lots of new techniques and theories which will help me in my career as a physiotherapist during my master's at Coventry University.

Anum Mukhtar
 MSc Advancing
 Physiotherapy Practice

Psychological, Social and Behavioural Sciences overview

The School of Psychological, Social and Behavioural Sciences offers postgraduate courses underpinned by a passion for 'making a difference' to local, national and international communities. Courses in Psychology, including health, forensic and occupational, explore the behaviours, thoughts and actions of people whilst applying these to contemporary real-world problems. We deliver NHS commissioned courses in Clinical Psychology and Cognitive Behavioural Therapy, looking at the application of clinical psychological theory and its aim to reduce psychological distress.

We also focus on crime, victimisation, punishment and criminal justice; including its causes and how society and social groups attempt to deal with it, as well as the practical and legal implications of forensic investigations. The school is committed to developing a better understanding of human behaviour within a social context, seeking to support people in need including some of the most vulnerable people within our society through our social work courses. Additionally, we offer expertise in leadership, management, coaching and guidance.

Facilities

Our school offers a range of specialist teaching facilities including an observation suite, counselling rooms and specialist software. The school also provides a special projects room that includes a two-way mirror, video camera and separate control rooms for testing and experimentation to create simulated interrogation environments.

Our psychopharmacology laboratory is used to investigate and test new ideas, and you could use eye tracker equipment to test human responses or EEG (electroencephalography) technology to measure brain waves. The facilities in the new multi-million-pound Alison Gingell Building enable you to 'learn through exploration', making use of the specialist equipment by exploring case studies and simulated scenarios.

Links with industry and professional bodies

We have close relationships with employers across our sectors, such as Age UK, Warwickshire County Council, the NSPCC, West Midlands Fire Service and Sunbeam Fostering Agency Ltd, and Police and Crime Commissioners. Guest speakers visit our school on a regular basis, including practicing psychologists, researchers and police. Many of our courses are formally recognised by accrediting bodies including the British Psychological Society (BPS), and the Health and Care Professions Council (HCPC).

In partnership with the Chartered Management Institute (CMI) most courses incorporate a mandatory Professional Development module, giving you an additional accreditation and qualification and many other benefits.

See the website for further details.

www.coventry.ac.uk/professional-development

Employability

Our courses provide real-life experience through industry engagement, professional experience options*, 'live' projects, actual case studies and simulation. Work placements enable you to gain the kind of experience employers look for. You could attend a placement in a variety of settings including law courts, police stations, hospitals, day centres, social work and community settings, schools, residential units and other public bodies. There may also be the option to take part in a field trip, fees apply. Previous students have gone to Tokyo, San Francisco, South Africa, Amsterdam and Sri Lanka. Finally, the average postgraduate leavers' salary in this school is £31,099 (DHLE, 2016).

*All students on courses with 'professional experience' will undertake professional experience, which may be based within the University or as a paid or unpaid internship with an external organisation. As such internships are subject to a competitive application and selection process, the University cannot therefore guarantee that all students will be able to carry out an internship. Professional experience can also include simulation or problem-based learning designed to deliver similar learning outcomes.



Psychological, Social and Behavioural Sciences courses

Courses

Applied Psychology MSc

Entry: Sept 2019 - full-time/part-time
(Option for professional experience)

www.coventry.ac.uk/applied-psych-msc

Business and Organisational Psychology MSc

Entry: Sept 2019 - full-time/part-time
(Option for professional experience)

www.coventry.ac.uk/business-psychology-msc

Career Guidance PgDip/MA

Entry: Sept 2019 - full-time/part-time

www.coventry.ac.uk/career-guidance-ma

Cognitive Behavioural Therapy PgDip/MSc (Top-up)

Entry: Sept 2019/Jan 2020 - part-time MSc (Top-up)

Entry: Jan 2020 - part-time PgDip

www.coventry.ac.uk/cognitive-therapy-msc

Forensic Psychology MSc

Entry: Sept 2019/Jan 2020 - full-time

www.coventry.ac.uk/forensic-psychology-msc

Fraud Investigation Management MSc

Entry: Sept 2020 - full-time/part-time

(Option for professional experience)

www.coventry.ac.uk/fraud-investigation-msc

Health Psychology MSc

Entry: Sept 2019 - full-time/part-time

www.coventry.ac.uk/health-psychology-msc

Occupational Psychology MSc

Entry: Sept 2019 - full-time

(Part-time/blended learning available -
January 2020 entry)

www.coventry.ac.uk/occupational-psychology-msc

Psychology MSc

Entry: Sept 2019 - full-time

(Part-time blended learning available -
January/May 2020 entry)

www.coventry.ac.uk/psychology-msc

Social and Health Care Leadership and Management MSc

Entry: Sept 2019 - blended learning

www.coventry.ac.uk/social-health-msc

Social Work MA

Entry: Sept 2019 - full-time (2 years)

www.coventry.ac.uk/social-work-ma

Entry Requirements

The minimum entry requirement for a taught master's course is the equivalent of a 2:2 undergraduate honours degree or above, please note certain courses require a 2:1 in a relevant academic discipline. Relevant experience will also be considered. Applicants whose first language is not English should have an IELTS of 6.5 overall. Pre-sessional English is available.

How to apply

International/EU students:

www.coventry.ac.uk/apply

UK students:

www.coventry.ac.uk/pgapply

Further information

Please visit our website for further course information including details on current course fees.

Accreditations

British Psychological Society (BPS) - Forensic Psychology MSc, Health Psychology MSc, Occupational Psychology MSc and Psychology MSc.

Health & Care Professions Council - Social Work MA.

Association for Business Psychology - Business and Organisational Psychology MSc.



Accreditations shall be renewed in accordance with the relevant body's standard review process and subject to the University maintaining the same high standards of course delivery.



The structure of the course and the styles of teaching are very different from the way we are taught in Malaysia – but they allow me to learn more.

Wei Pang
MSc Occupational Psychology

Academic Writing

The Centre for Academic Writing (CAW) offers pioneering MA/PgDip/PGCert courses, which explore the fast-expanding and increasingly professionalised field of Academic Writing Development.

An innovative teaching and research centre, our history goes back to 2004 and we were the first UK writing centre with a focus on teaching and researching Academic Writing pedagogies in Higher Education. We have earned an international reputation in Academic Writing research and practice. Our team of academics have strong links to professional organisations and networks in the field. We also host the Journal of Academic Writing, an international peer-reviewed journal.

Our postgraduate programmes are offered by distance learning, so you can participate from a distance and fit your learning around other commitments. The courses combine optional residential workshops with online modules, one-to-one tutoring and independent study.

Courses

Academic Writing Development and Research MA

Entry: Sept 2019 - online/blended learning
www.coventry.ac.uk/academic-writing-ma

Academic Writing Development and Research PgDip

Entry: Sept 2019 - online/blended learning
www.coventry.ac.uk/academic-writing-pgdip

Academic Writing Development PGCert

Entry: Sept 2019 - online/blended learning
www.coventry.ac.uk/academic-writing-pgcert

Entry Requirements

Applicants should hold a 2:2 undergraduate honours degree or above in any academic discipline in the Humanities, Social Sciences, or Sciences, and have an interest in teaching, supporting, and researching academic writing. Applicants who can demonstrate relevant experience at an appropriate professional level but do not have the formal academic entry qualifications may be admitted subject to an application and assessment. Applicants who are not native speakers of English must have a minimum 6.5 IELTS test score, normally with a minimum score of 7 in writing. Equivalent English language proficiency qualifications or evidence of ability may be accepted.

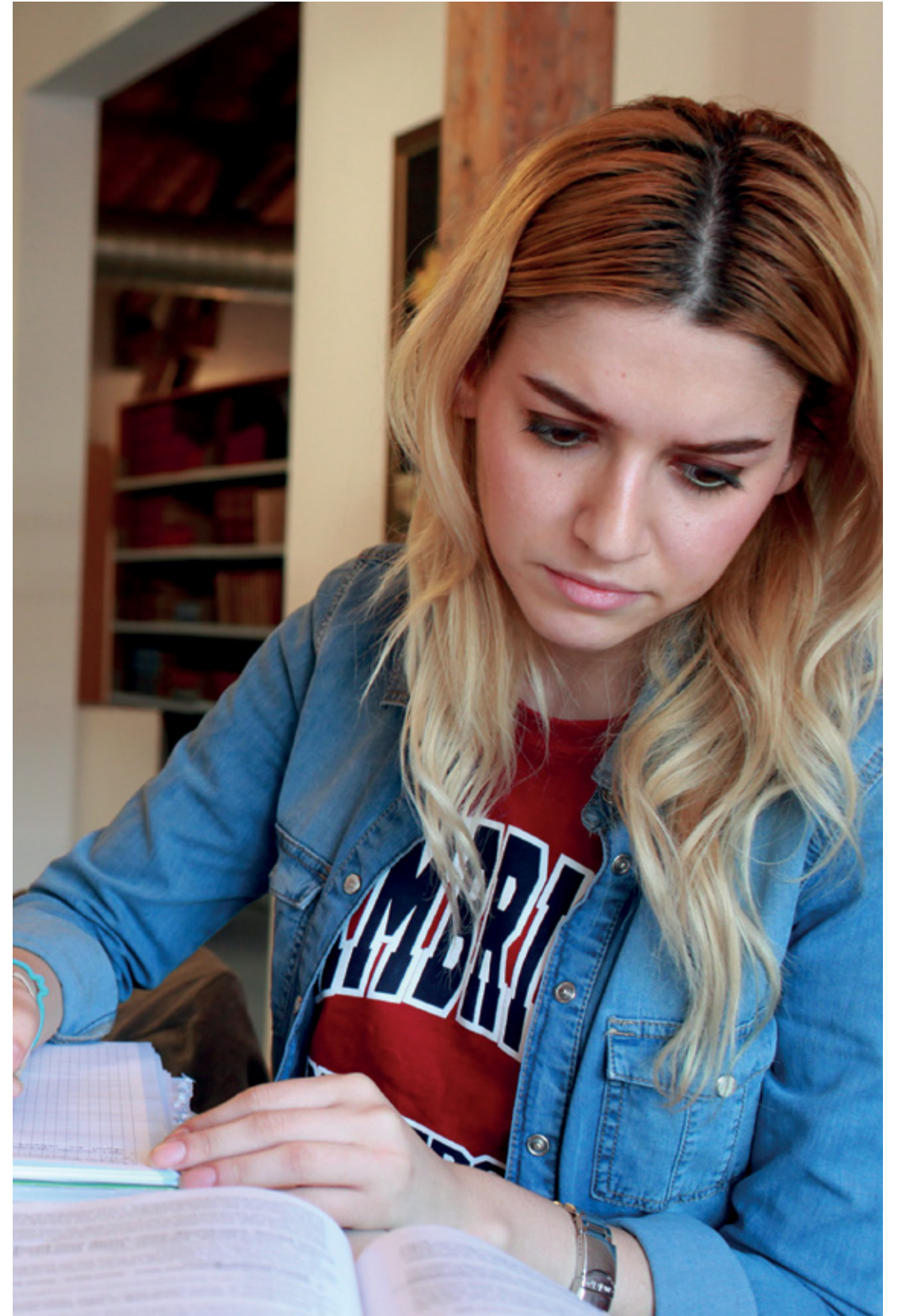
How to apply

International/EU students:
www.coventry.ac.uk/apply

UK students:
www.coventry.ac.uk/pgapply

Further information

Please visit our website for further course information including details on current course fees.



Trust, Peace and Social Relations

The Centre for Trust, Peace and Social Relations is distinctive both in terms of the research undertaken and the approaches used. We are a truly multi-disciplinary Centre: by drawing from academic disciplines, knowledge and skills across the social sciences and beyond, we tackle many of the most critical and sensitive current challenges facing society. The Centre for Trust, Peace and Social Relations exemplifies the University's long-standing commitment to research that makes a strong impact on society and on the security and quality of life of ordinary people worldwide.

We offer master's level courses by blended learning designed for graduates and professionals interested in global security, peacebuilding and diversity. Our courses are delivered online combining short residential workshops with online modules, one-to-one tutoring and independent study. The courses are highly participatory, enabling students to engage in our programme of study wherever you are in the world.

To find out more visit www.coventry.ac.uk/ctpsr

Courses

Peace and Conflict Studies PgCert/PgDip/MA

Entry: Sept 2019 - blended learning

www.coventry.ac.uk/peace-conflict-studies-ma

Maritime Security PgCert/PgDip/MA

Entry: Sept 2019 - blended learning

www.coventry.ac.uk/maritime-security-ma

Global Diversity Governance MPA

Entry: Sept 2019 - blended learning

www.coventry.ac.uk/global-diversity-mpa

Entry Requirements

The minimum entry requirement for a taught master's course is the equivalent of a 2:2 undergraduate honours degree or above. Applicants who can demonstrate considerable work experience at an appropriate level may also be admitted, subject to an interview. Applicants whose first language is not English should have an IELTS of 6.5 overall. The Centre offers a fast-track route for working professionals via Accreditation of Prior Experiential Learning. For further information please email study.ctpsr@coventry.ac.uk

How to apply

International/EU students:

www.coventry.ac.uk/apply

UK students:

www.coventry.ac.uk/pgapply

Further information

Please visit our website for further course information including details on current course fees.



Coventry University London overview

As part of the Coventry University Group, Coventry University London offers you the opportunity to study a range of business and management courses in the nation's capital. Launched in 2010, Coventry University London is at the heart of one of the most successful business and financial centres in the world, offering innovative and employability focused MBA and MSc courses to students from more than 80 countries.

Opportunities in the heart of London

Our campus is centrally located only minutes from the London Stock Exchange, the Bank of England and Bloomberg so you'll feel like you're right in the heart of the action. Situated near to some of the world's leading organisations means that you can benefit from a better opportunity to secure internships which are an integral part of our London courses.

You won't be alone in London, the largest city in the UK, as you'll have the additional support of the University, your tutors and you'll meet other ambitious students who come here to learn, just like you. We have students from all over the world and so have a truly international feel, offering courses with an international outlook.

International course content

By studying a postgraduate degree course at Coventry University London, you will be taking your first steps towards advancing your career to the next level. We offer a range of postgraduate courses covering a variety of business-related areas.

Industry links

We work in close partnership with employers and industry, including large global commercial organisations, internationally renowned charities, small and medium-size enterprises and business start-ups, to ensure our degrees remain relevant, up-to-date and deliver the crucial skills they require. Some of the employers we work with include The Ritz London, Genesis, Deloitte and Barclays.

Work experience opportunities available on all courses

As part of your degree course you will have the option to undertake an internship or consulting project with an employer or a simulation project. As an alternative, MBA students can develop a business plan through an entrepreneurship project. All students can also opt to complete a dissertation project.

Entrepreneurial success

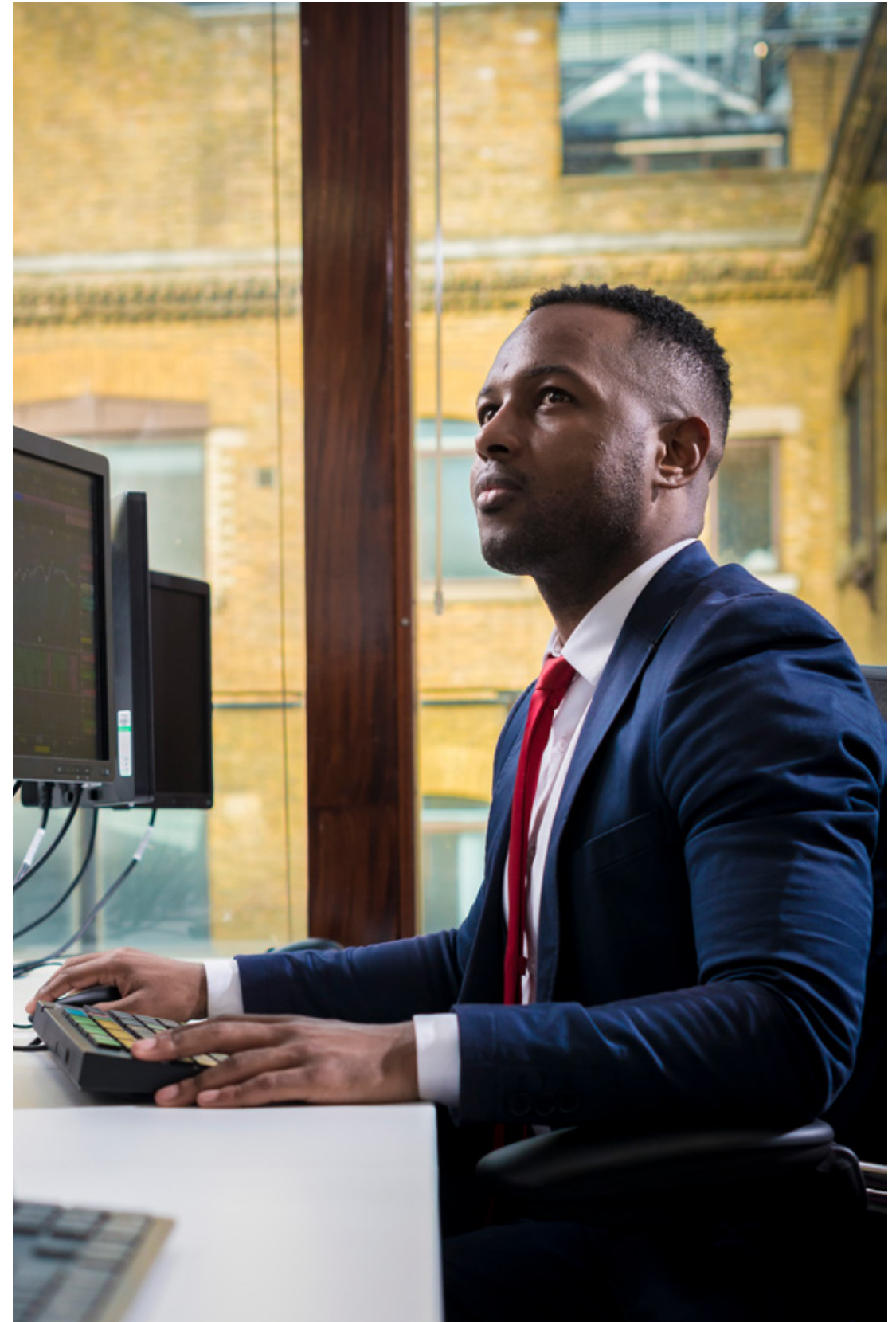
For those who are determined to become successful entrepreneurs, our teams in London and Coventry can help you shape and strengthen your business ideas. We will not only teach you about entrepreneurship, but help you experience it too.

You will have access to our Enterprise Hub where you can meet with future clients, business partners or collaborate with other entrepreneurial students. Your business will have the added benefit of having a City of London trading address. We have many successful alumni who have launched their own businesses in the UK, including international students who have done so under the Tier 1 (Graduate Entrepreneur) Visa.

Previous students' businesses have ranged from creating a portal for news and tickets for South Asian movies, music concerts and events in the UK, to offering unique computational software for designing fabric-formed concrete beams.

Find out more:

T: **+44 (0)20 7247 3666**
E: **info.london@coventry.ac.uk**



Coventry University London courses

Courses

Global Finance MSc

Entry: Jan 2020 - full-time/part-time
www.coventry.ac.uk/lon-global-finance-msc

Global Financial Trading MSc

Entry: Sept 2019/Jan 2020 - full-time/part-time
www.coventry.ac.uk/lon-global-financial-msc

International Fashion Marketing MSc

Entry: Sept 2019/Jan 2020 - full-time/part-time
www.coventry.ac.uk/lon-int-fashion-marketing-msc

International Hospitality and Tourism Management MSc

Entry: Sept 2019 - full-time/part-time
www.coventry.ac.uk/lon-int-hospitality-msc

Professional Accounting MSc

Entry: Sept 2019 - full-time
www.coventry.ac.uk/lon-professional-accounting-msc

MBA courses

Global Business MBA

Entry: Sept 2019/Jan 2020/May 2020
 - full-time/part-time
www.coventry.ac.uk/lon-global-business-mba

Global Financial Services MBA

Entry: Sept 2019/Jan 2020 - full-time/part-time
www.coventry.ac.uk/lon-global-financial-mba

International Fashion Management MBA

Entry: Sept 2019/Jan 2020 - full-time/part-time
www.coventry.ac.uk/lon-int-fashion-mgt-mba

International Human Resource Management MBA

Entry: Sept 2019/Jan 2020 - full-time/part-time
www.coventry.ac.uk/lon-int-hrm-mba

International Marketing MBA

Entry: Sept 2019/Jan 2020/May 2020 - full-time
www.coventry.ac.uk/lon-int-marketing-mba

Entry Requirements

A good quality undergraduate honours degree or equivalent. Applications from candidates with relevant experience will be considered on an individual basis. Work experience is desirable but not essential. International students and students whose first language is not English require an IELTS score of 6.5 overall, or equivalent.

How to apply

www.coventry.ac.uk/london/apply

Further information

Please visit our website for further course information including details on current course fees.

Accreditations

Chartered Management Institute (CMI) HE Partner (applies to most courses, check website for further details).

CIPD Approved centre - International Human Resource Management MBA.

University Affiliation Program member, GARP Global Association of Risk Professionals - Global Finance MSc.



Accreditations shall be renewed in accordance with the relevant body's standard review process and subject to the University maintaining the same high standards of course delivery.



I had a fantastic experience studying with passionate and dedicated teachers, and an employability team always available to offer advice and support.

Agathe Silvagni
 MSc Global Financial Trading

Coventry University Online overview

As part of the Coventry University Group, with Coventry University Online you can study a postgraduate qualification from anywhere in the world with an internet connection.

Many potential postgraduate students, constrained by work, family commitments or simply a busy lifestyle, feel they can't access education. We developed Coventry University Online to provide an alternative approach to studying a postgraduate degree. Instead of coming to campus to learn, the learning comes to you. So, your living room, the bus you catch to work and the park next to your house could become your lecture theatre.

Flexible online learning

Online learning is a way of studying from anywhere in the world. You'll still have access to our world-class teaching, but all of your learning will take place online, as you work towards an internationally-recognised qualification.

Studying online with Coventry University puts you in control of your postgraduate degree, allowing you to balance learning with other commitments. If you have a full-time job, you can spread the course over five years – or if you are able to dedicate more hours, complete it within just two years.

No matter what time of day it is or where you are in the world, all you need is a device with internet access. Instead of attending lectures and working with a fixed timetable, you will study at a time and place that suits you.

You'll be able to access video content, virtually connect with tutors and a community of hundreds of fellow students. We provide all essential items such as core textbooks (through the online library), all the study materials you'll need, tutor support, and a 24/7 access to the virtual learning environment FutureLearn.

More benefits of online study

Fitting your study around your lifestyle and commitments can be helpful and there are many more benefits that come with this kind of learning;

- Study from more locations – live on the other side of the country or even the globe? Travel a lot with your job? Online learning can overcome geography, wherever you might be.
- Study at your own pace – online learning has the advantage of an adaptable routine. You can take whatever time you need to fully understand the learning material.
- Flexible payment options – we offer our learners the ability to pay-per-module as well as three enrolment periods per year – January, May and September.
- Dedicated support – highly skilled Student Experience Officers are on hand to provide help and support when you need it.

How to apply

We have a dedicated Recruitment and Admissions Team to support you through your application process and answer any queries you may have. We accept applications all year round and you can apply online or by contacting our team directly.

Once you have submitted your application, our team will keep you updated every step of the way. If you receive an offer to study with us, we will support you through enrolment before introducing you to your dedicated Student Experience Officer who will support you during your studies.

Find out more:

T: **+44 (0)24 7765 4700**

E: **onlinedegrees@coventry.ac.uk**



Coventry University Online courses

Courses

Business and Organisational Psychology MSc

Entry: Sept 2019/Jan 2020/May 2020
 - part-time/flexible learning
www.coventry.ac.uk/business-psychology-online-msc

Construction Management with BIM MSc

Entry: Sept 2019/Jan 2020/May 2020
 - part-time/flexible learning
www.coventry.ac.uk/construction-mgt-online-msc

Construction Project and Cost Management MSc

Entry: Sept 2019/Jan 2020/May 2020
 - part-time/flexible learning
www.coventry.ac.uk/cost-project-online-msc

Cyber Security MSc

Entry: Sept 2019/Jan 2020/May 2020
 - part-time/flexible learning
www.coventry.ac.uk/cyber-sec-online-msc

Disaster Management and Resilience MSc

Entry: Sept 2019/Jan 2020/May 2020
 - part-time/flexible learning
www.coventry.ac.uk/disaster-mgt-online-msc

Emergency Management and Resilience MSc

Entry: Sept 2019/Jan 2020/May 2020
 - part-time/flexible learning
www.coventry.ac.uk/emergency-mgt-online-msc

Nursing MSc

Entry: Sept 2019/Jan 2020/May 2020
 - part-time/flexible learning
www.coventry.ac.uk/nursing-online-msc

MBA courses

MBA

Entry: Sept 2019/Jan 2020/May 2020
 - part-time/flexible learning
www.coventry.ac.uk/online-mba

MBA with Artificial Intelligence specialism

Entry: Sept 2019/Jan 2020/May 2020
 - part-time/flexible learning
www.coventry.ac.uk/artificial-intel-online-mba

MBA for Sustainable Tourism Sector

Entry: Sept 2019/Jan 2020/May 2020
 - part-time/flexible learning
www.coventry.ac.uk/sustainable-tourism-online-mba

MBA for Health Care Sector

Entry: Sept 2019/Jan 2020/May 2020
 - part-time/flexible learning
www.coventry.ac.uk/health-care-online-mba

MBA for Cyber Security Sector

Entry: Sept 2019/Jan 2020/May 2020
 - part-time/flexible learning
www.coventry.ac.uk/cyber-sec-mgt-online-mba

Entry Requirements

The minimum entry requirement for a taught master's course is the equivalent of a 2:2 undergraduate honours degree or above; please note certain courses require a 2:1 in a relevant academic discipline. Relevant experience will also be considered. Applicants whose first language is not English should have an IELTS of 6.5 overall. Pre-session English is available.

How to apply

www.coventry.ac.uk/online

Further information

Please visit our website for further course information including details on current course fees.

Accreditations

Association of Business Psychology (ABP) and Chartered Management Institute (CMI) - Business and Organisational Psychology MSc.



Accreditations shall be renewed in accordance with the relevant body's standard review process and subject to the University maintaining the same high standards of course delivery.



I work alongside students who often start off by saying "I don't think I can do this", but then go on to complete their assessments and achieve a fantastic grade.

Serena
 Online progression coach

Fees and living costs

As a postgraduate, your two main costs of study will be academic fees and living expenses.

Tuition fees

Course fees are calculated on the basis of what it costs to teach each course and will vary depending both on your chosen course of study and your fees status as a UK, EU or non-EU student. You can find course fees on the individual course pages in the online course finder at www.coventry.ac.uk

More information on credit/module fees is available at: www.coventry.ac.uk/pgfees

Please note: at the time of going to print, the University has not set its fees for entrants in 2019. We set fees for individual courses, and fees from previous years are no indication of fees for future years.

Living expenses

If you are choosing where to live in the UK, you could find your money goes further here in Coventry. Your cost of living will depend on your lifestyle and spending patterns. Reassuringly, [Numbeo.com](http://numbeo.com), a worldwide database, listed the cost of living index in Coventry as 20% lower than in London in August 2018.¹

Other costs

Applicants should be aware that additional costs such as any accreditation fees, optional international and industrial field trips are not included within the course tuition fee. For more information about these additional costs please use the contacts on [page 126](#).

Living costs in the UK

Here is an approximate guide to the minimum amount you could expect to pay for some usual living expenses in the UK per month. These costs are for one person only, so please keep this in mind if you're working out a budget that includes children and dependents.

You'll also need to consider how you will pay for travel to and from the University and the list doesn't include food, social, course materials (such as books) and clothing. Remember that Coventry is a more affordable city than London, and offers many places to socialise and buy affordable clothing.

Example living expenses	Approximate cost
Private city-centre apartment (including shared accommodation)	£380 - £630 per month ²
University accommodation (Cheapest = self catered, non en-suite single room. Premium = self-catered, en-suite studio)	From £6,850 - £8,750 for a 50 week contract ³ UK and EU students may be required to pay a £300 security deposit and set up a payment plan for the remainder of your rent. International students will be asked to pay a £300 deposit plus your first instalment of rent.
Utilities (some halls of residence may include utilities)	£175 per month ⁴
TV Licence (mandatory for watching live TV or BBC online)	£12.50 per month (or £150.50 per year ⁵)
Mobile phone	£15 - £50 per month
Leisure / Sport (This is calculated on membership for the Sport and Recreation Centre)	£10 per month ⁶

These figures are a guide only based on September 2018 prices.

¹ www.numbeo.com/cost-of-living/in/Coventry.

² www.numbeo.com/cost-of-living/in/Coventry.

³ www.coventry.ac.uk/life-on-campus/accommodation/accommodation-choices/postgraduate-choices

⁴ August 2018 www.numbeo.com/cost-of-living/in/Coventry

⁵ www.gov.uk/tv-licence.

⁶ www.coventry.ac.uk/life-on-campus/student-life/sport-coventry



Financial support

A postgraduate qualification is an investment in your future and studies show that postgraduates earn more on average over a lifetime than undergraduates. However, we know that the cost of a postgraduate course can be a barrier for some. Thankfully there is a wide range of financial support available for postgraduate study, including loans, flexible payment options, discounts and scholarships.

UK/EU postgraduate loan scheme

Government-backed student loans are available to support postgraduate study in England. For more information, please visit:

www.gov.uk/funding-for-postgraduate-study

Professional and career development loan (PCDL)

PCDLs are bank loans that can be used to pay for work related learning to enhance your employability and career prospects. The Professional and Career Development Loan scheme is closing. You must apply by 25 January 2019. For more information, please visit:

www.gov.uk/career-development-loans

Flexible payment scheme

Coventry University offers flexible payments in accordance with the type of funding you are receiving and when you will receive it.

This enables you to set up payment due dates in line with your funding giving you peace of mind that your course costs can be budgeted for and met, avoiding unnecessary financial pressure.

We offer both direct debit and automated recurring card payments which will need to be set up at the start of your course.

For more information, please visit:

www.coventry.ac.uk/pgfunding

International students

International students must have paid a minimum of two thirds of their tuition fees to be able to complete enrolment.

This information is correct for our September 2018 intake, but is subject to change for future intakes.

For the latest advice, visit

www.coventry.ac.uk/int-how-to-pay

Coventry University Alumni Discount

Students who have previously completed an undergraduate degree with the Coventry University Group and go on to enrol on a postgraduate taught course are eligible for a £1000 fee discount*.

For more information, please visit:

www.coventry.ac.uk/pgfunding

UK sports scholarships

One of the best programmes of its kind in the country, our sports scholarships scheme awards scholarships competitively to approximately 30 students each year who have the sporting ability to represent the University at a high level. Applications are open to all students participating in a sport recognised by Sport England. Sports scholarships are for one year and are worth either £3,000 (consisting of up to £1,500 cash and up to £1,500 worth of support) or £1,500 (consisting of £750 cash and £750 worth of support). For more information, please contact:

sportingexcellence.ss@coventry.ac.uk

UK postgraduate scholarships

There are a limited number of UK postgraduate scholarships available worth £1,500 to undergraduates achieving a 1st class degree classification. Please visit our website for further details:

www.coventry.ac.uk/pgfunding



Commonwealth scholarship scheme

The Commonwealth Scholarship Commission offers opportunities to Commonwealth citizens to study in the UK. If you are a citizen of a developed Commonwealth country, you can apply for scholarships for PhD and split-site (PhD) study. If you are a citizen of a developing Commonwealth country, you can apply for scholarships for master's, PhD, or split-site (PhD) study at UK universities, as well as shared scholarships for master's study at selected UK universities. To find out more, please visit: cscuk.dfid.gov.uk/apply

International/EU Scholarships

The University offers a wide variety of scholarships for high-achieving international and EU students. Find out more at: www.coventry.ac.uk/cuscholarships

International/EU students can direct scholarship enquiries to the International Office at: scholarships.io@coventry.ac.uk

Chevening scholarships

Chevening is the UK Government's international awards scheme aimed at developing global leaders. Funded by the Foreign and Commonwealth Office, it offers full scholarships to outstanding individuals from more than 150 countries to study up to one year at master's level. Recipients also benefit from an expanding suite of unique networking and engagement opportunities. Find out more at: www.chevening.org/apply

Other philanthropic and professional support Charities, trusts and societies, such as the Royal Society, Royal Academy of Engineering or the British Academy, sometimes provide grants, often for students from poorer backgrounds or those who have achieved academic excellence. Ask at your local library for publications such as the Educational Grants Directory, the Charities Digest, the Grants Register, or the Directory of Grant Making Trusts for more information.

You can also search for funding options online at: www.scholarship-search.org.uk
www.turn2us.org.uk

Part-time work

A number of postgraduate students fund further study through earnings from a part-time job. Our dedicated recruitment agency, thefutureworks, is on hand to help you find suitable employment opportunities. Find out more at: www.thefutureworks.org.uk

Contact

If you are a UK/EU student and have any queries about funding, including queries about financial support, please contact our Student Funding Team:

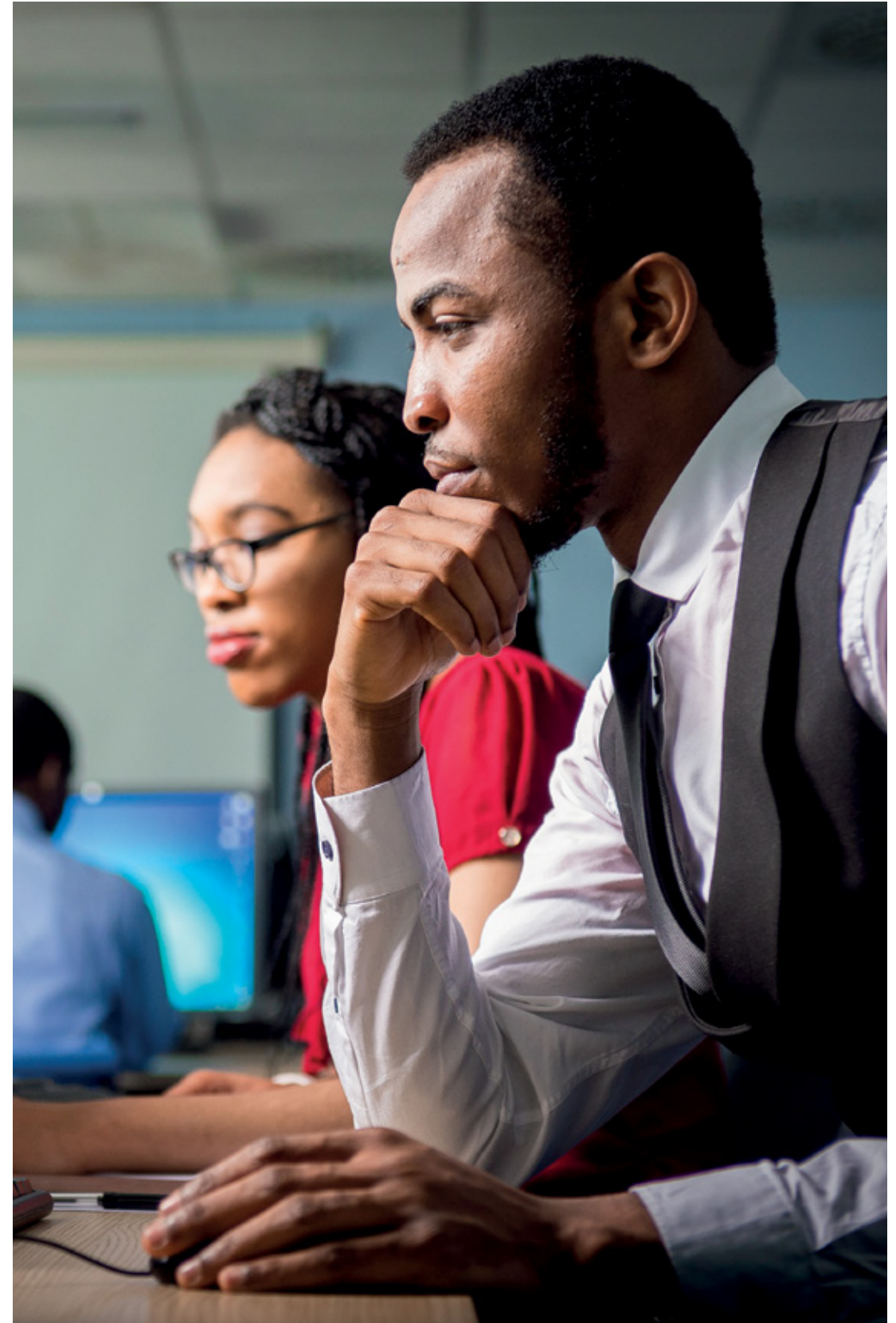
T: **+44 (0)24 7765 2040**

E: fundingsupport@coventry.ac.uk

If you are an international student and have any scholarship queries, please contact the international office:

scholarships.io@coventry.ac.uk

To find out more about all of these options, visit: www.coventry.ac.uk/pgfunding



Visit us

Open Days

We hold Open Days and attend postgraduate study events regularly throughout the year, both in the UK and overseas. Our Open Days are designed to answer all of your questions about postgraduate study. They provide the perfect opportunity to meet academic staff and engage with some of our current students.

For more information about student-led tours and Open Days, please visit:

www.coventry.ac.uk/opendays

Rail travel times from Coventry		
City	Frequency	Travel time
London	Every 40 mins	1 hour
Birmingham	Every 10-20 mins	20-30 mins
Cambridge	Every 20 mins	2 hours 30 mins
Oxford	Every 60 mins	50 mins
Bristol	Every 30 mins	2 hours
Manchester	Every 20 mins	2 hours
Leeds	Every 60 mins	2 hours 30 mins

Airports (Approximate times by road)		
City	Miles	Travel time
Birmingham	11 miles	20 mins
East Midlands	39 miles	40 mins
London Gatwick	132 miles	1 hour 50 mins
London Heathrow	97 miles	1 hour 30 mins
Manchester	107 miles	1 hour 50 mins

Student-led tours

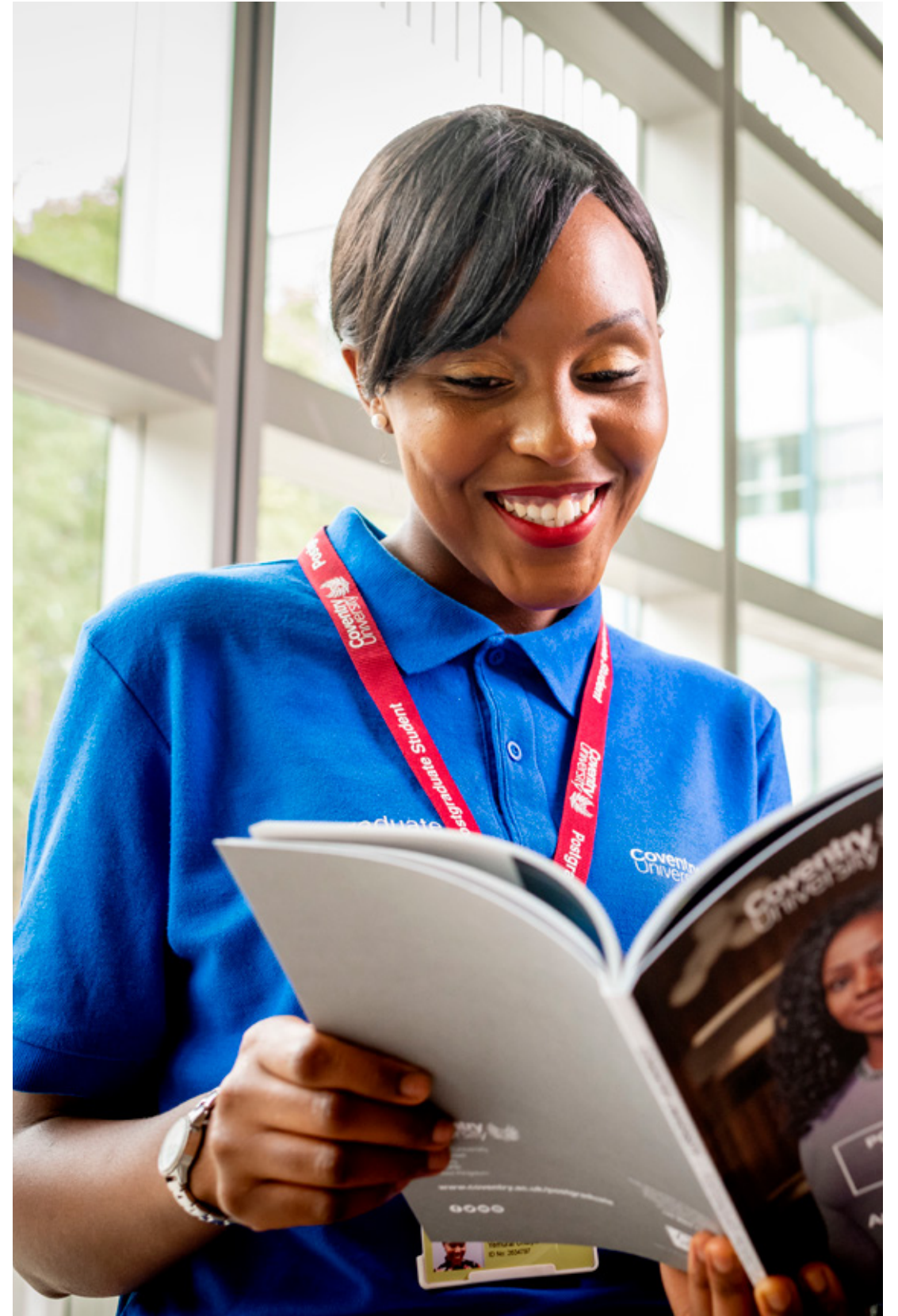
If you are unable to attend an Open Day, you may join one of our student-led tours of our campus and facilities that run between October and June.

Overseas events

If you are an international student, we know that it is not always possible to visit the UK before starting your studies. That is why we attend regular events around the world to meet with students and help you to learn more about studying in the UK.

For details of overseas events, please visit:

www.coventry.ac.uk/internationalevents



How to apply

UK students

If you are a UK student, to apply to study on a postgraduate course (full-time or part-time) you should complete an online postgraduate application form. This form is available via each course page on our website. The relevant web links are listed on the course pages in this prospectus.

In order to process your application, we need you to send us some key information – either paper copies by mail, or scanned and emailed. If possible, you should submit the following with your application form:

- One recently dated academic or work reference on official headed paper or emailed from a professional address direct to ukpostgraduate@coventry.ac.uk
- Copies of academic transcripts if available
- Copies of degree/diploma certificates if available
- A portfolio of artwork for art-based courses
- An English qualification equivalent to GCSE English at grade C (new grade 4) or above
- Your personal statement
- A sponsor letter on official headed paper or completed fee authorisation form if you are being sponsored by an employer (fee authorisation form can be downloaded from www.coventry.ac.uk/pgfees and should be sent to Finance before enrolment. You can also find details here of where to send the completed form.)

Once received, we will assess your application and, aim to respond within 10 working days. This may take longer during our peak times.

International/EU students

International and EU students should apply online or by downloading the application form available at www.coventry.ac.uk/apply or via the course pages on our website.

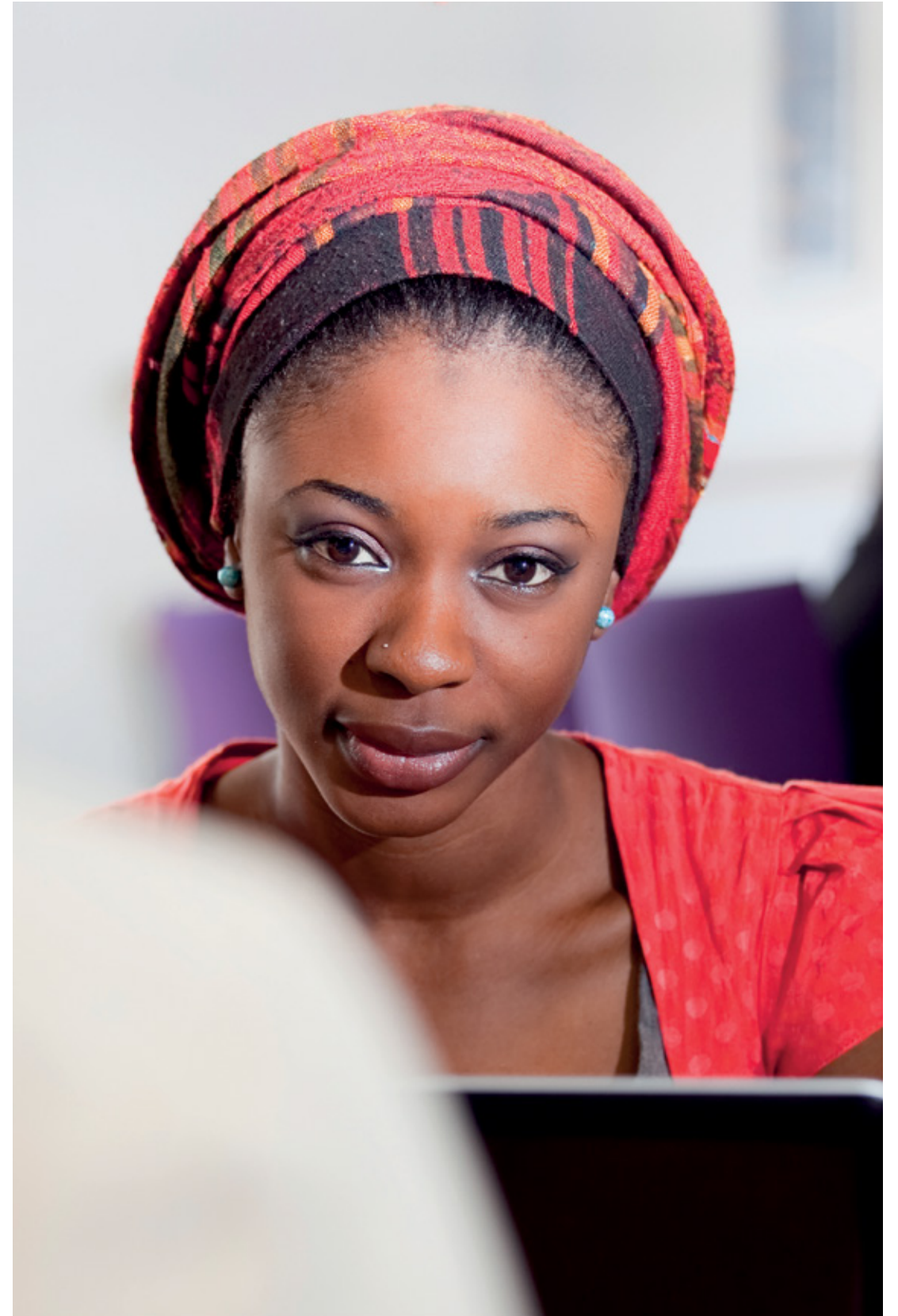
If you are in China, Indonesia, Kenya, Nigeria or Pakistan, you can speak to one of our local, in-country representatives, who can help you with your application. Contact details can be found on our website at www.coventry.ac.uk/international

The International Office will also need the following information in order to make a decision on your application:

- Copies of all relevant academic transcripts
- Copies of degree/diploma certificates or a work reference if you are employed
- One academic and/or one work reference on official headed paper (some courses require two reference letters)
- An acceptable English language test score (IELTS or PTE or equivalent)
- Your personal statement
- A copy of your current passport
- A sponsor letter or Financial Guarantee Letter on official headed paper.
- A portfolio, where required, for the course you are applying to.

We aim to provide an initial decision on your application in less than a week.

In order to get your visa, you will need to pay a deposit. This is typically one third of your full tuition fee. Before enrolment, you will need to pay the second third of your tuition fee.



Key contacts

Coventry University – UK students

T: +44 (0)24 7765 4321

E: ukpostgraduate@coventry.ac.uk

www.coventry.ac.uk/postgraduate

[f](#) /coventryuniversity

[t](#) @covcampus

[v](#) CovStudent

[i](#) @covuni

[l](#) coventry_uni

Coventry University – International and EU students

T: +44 (0)24 7765 2010

Enquiry form: www.coventry.ac.uk/iocontactus

www.coventry.ac.uk/international

[f](#) /coventryuniversityinternational

[t](#) @covintstudents

[i](#) @coventryuni_int

Coventry University – research students

T: +44 (0)24 7615 2237

E: research-apps.pg@coventry.ac.uk

www.coventry.ac.uk/research

Coventry University London

T: +44 (0)20 7247 3666

E: info.london@coventry.ac.uk

www.coventry.ac.uk/london

Coventry University Online

T: +44 (0)24 7765 4700

E: onlinedegrees@coventry.ac.uk

www.coventry.ac.uk/online



-  /coventryuniversity
-  @covcampus
-  @covuni
-  coventry_uni
-  CovStudent

Coventry University
Priory Street
Coventry
CV1 5FB
United Kingdom

www.coventry.ac.uk



Awarded Gold for outstanding
teaching and learning 2017



This document is available in
other formats on request.
Please contact Marketing
and External Affairs on
+44 (0)24 7765 7688

